

Mainsail: 2000326 Paul-Formosa 46 Main-v2

Design Info

=====

Design File:

E:\dropbox\Dropbox\Fareast Sails\2022 Order\2000326 Paul\2000326 Paul-Formosa 46 Main-v2.des

Initial Design Date: 24/2/2022

Boat:

Comments:
Mainsail need 3 reefs. -CL

Client:

Design Data

=====

Main

Measurements

Luff geodesic: 14.390m
 Leech geodesic: 15.155m
 Foot geodesic: 5.014m
 Head geodesic: 0.115m
 Upper width (MUW): 0.925m
 Three-quarter width (MTW): 1.727m
 Half width (MHW): 3.094m
 Quarter width (MQW): 4.138m
 Foot median: 14.705m
 ORC Mainsail area: 41.463m?
 Surface area: 42.431m?
 Clew height: 0.100m
 Mast rake: 0.000m

Battens

Position	Length	Roach	Angle	Luff	Leech	Full
80.000%	1.482m	0.295m	72.276?	11.508m	12.079m	Full
60.000%	2.662m	0.400m	72.276?	8.630m	9.060m	Full
40.000%	3.580m	0.334m	72.276?	5.753m	6.040m	Full
20.000%	4.336m	0.183m	72.276?	2.876m	3.020m	Full

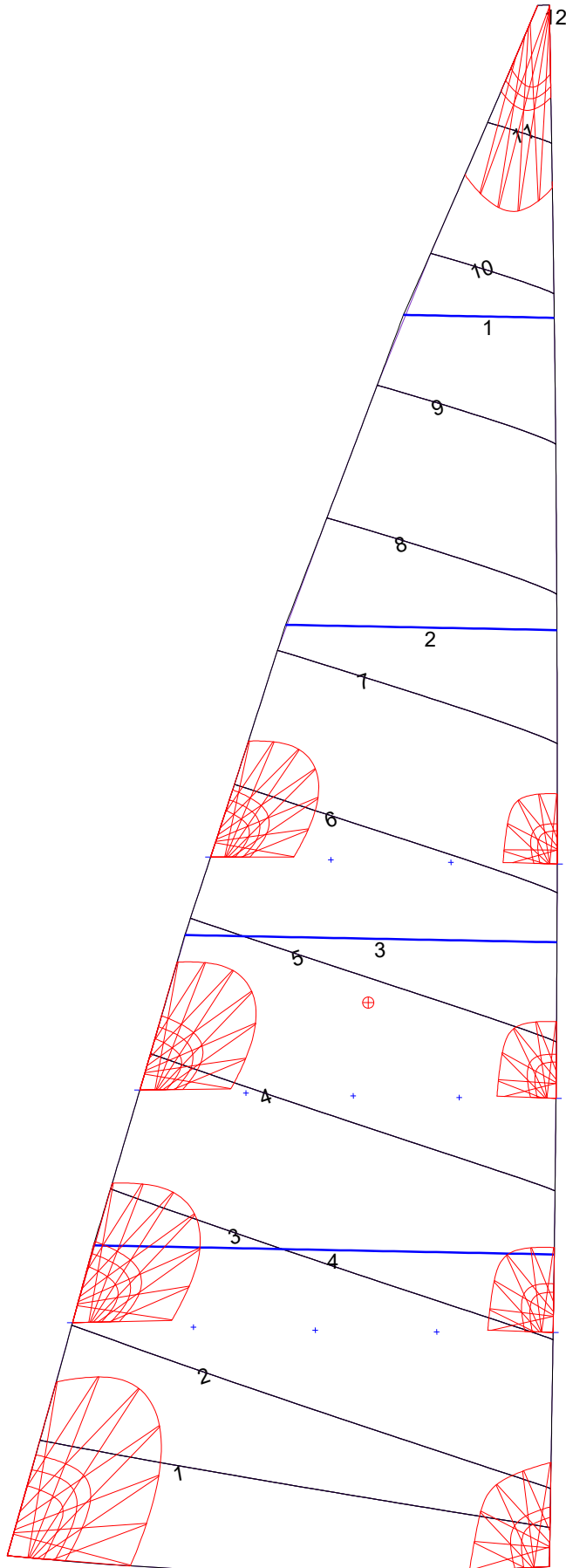
Reefing Points

1, Luff: 2.158m ; Leech: 2.241m ; Offset: 0.000m ; Number Eyelets: 3
 2, Luff: 4.316m ; Leech: 4.481m ; Offset: 0.000m ; Number Eyelets: 3
 3, Luff: 6.474m ; Leech: 6.724m ; Offset: 0.000m ; Number Eyelets: 2

Luff Curve

		Fanned Luff (@ 5.00% [0.250m])	Before BSeam
14.389m,	0.000m	100% (14.390m) :	0.000m
10.792m,	-0.054m	90% (12.951m) :	0.046m
7.195m,	-0.072m	80% (11.512m) :	0.092m
3.597m,	-0.054m	70% (10.073m) :	0.133m
0.000m,	0.000m	60% (8.634m) :	0.160m
		50% (7.195m) :	0.165m
		40% (5.756m) :	0.151m
		30% (4.317m) :	0.125m
		20% (2.878m) :	0.085m
		10% (1.439m) :	0.039m
		0% (0.000m) :	0.000m

Mainsail: 2000326 Paul-Formosa 46 Main-v2



Seam Allowances			
Zone: 1	Split	Radial	Cross
	0.000m	0.000m	0.035m

Edge Excesses			
Sail:	Luff	Leech	Foot
	0.000m	0.000m	0.000m

Total Seam Lengths (m)

Horizontal	33.93
Radial/Vertical	0.00
Bi-Radial Split	0.00

Materials

Material	Area (m ²)	Panels
Material 1	42.47	1,2,3,4,5 6,7,8,9,10 11,12