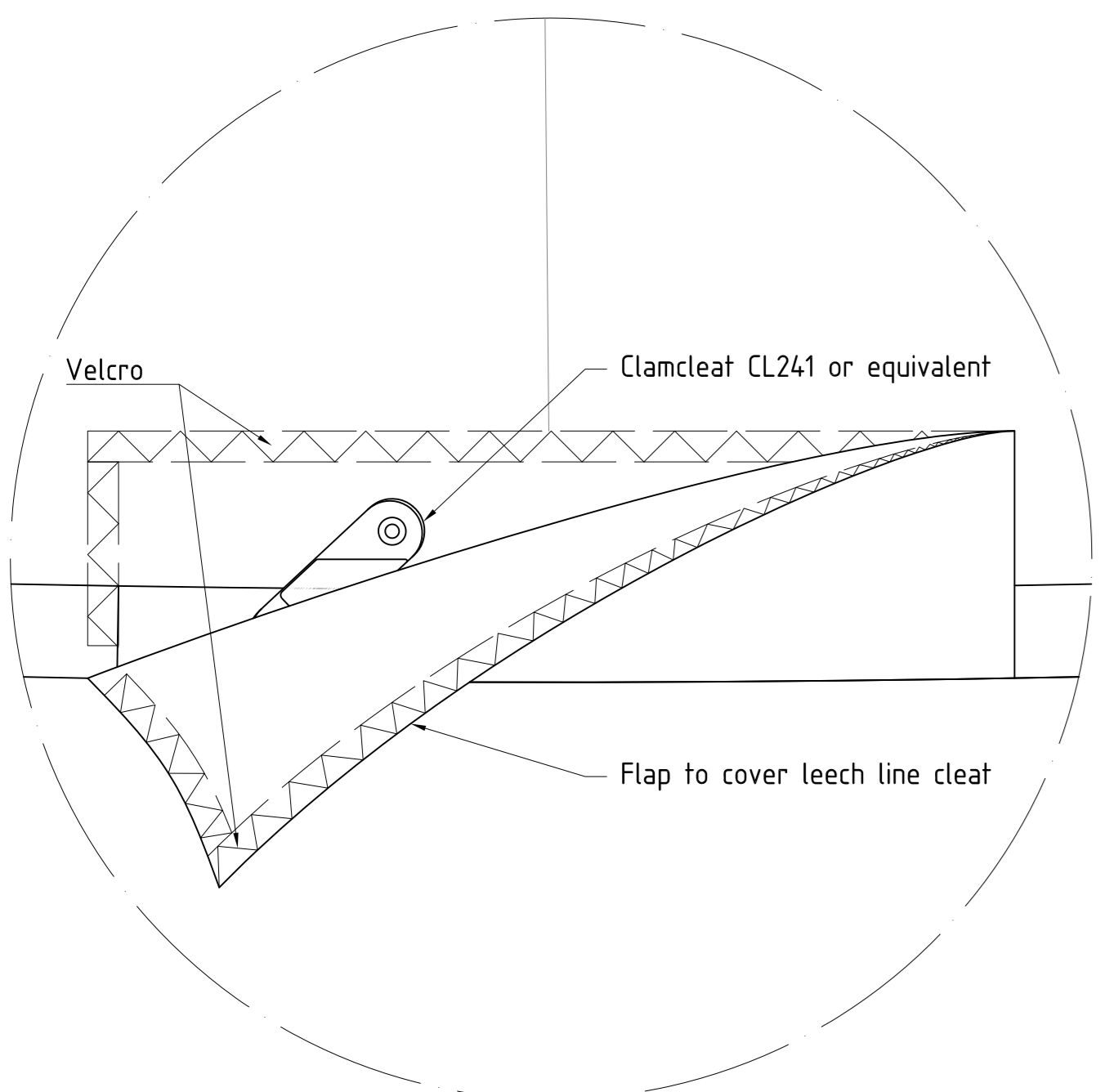


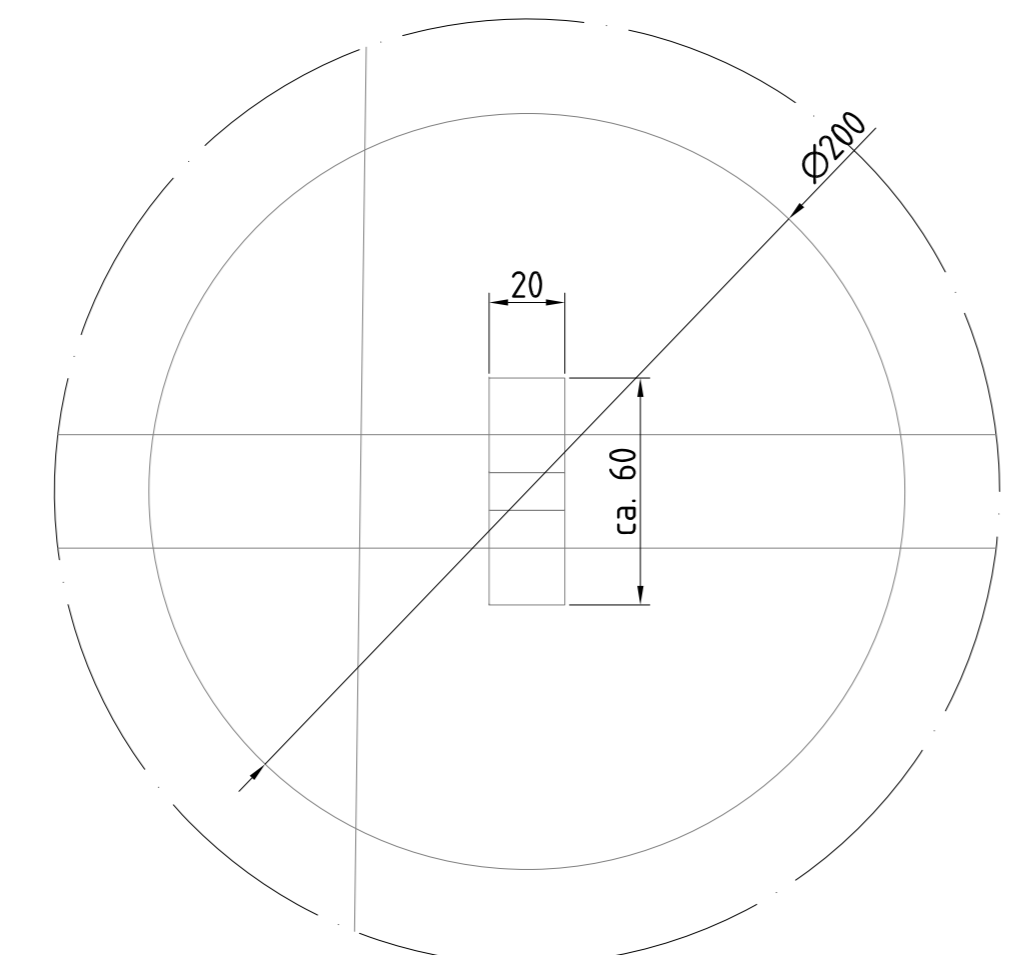


$A_M = 27.76 \text{ m}^2$

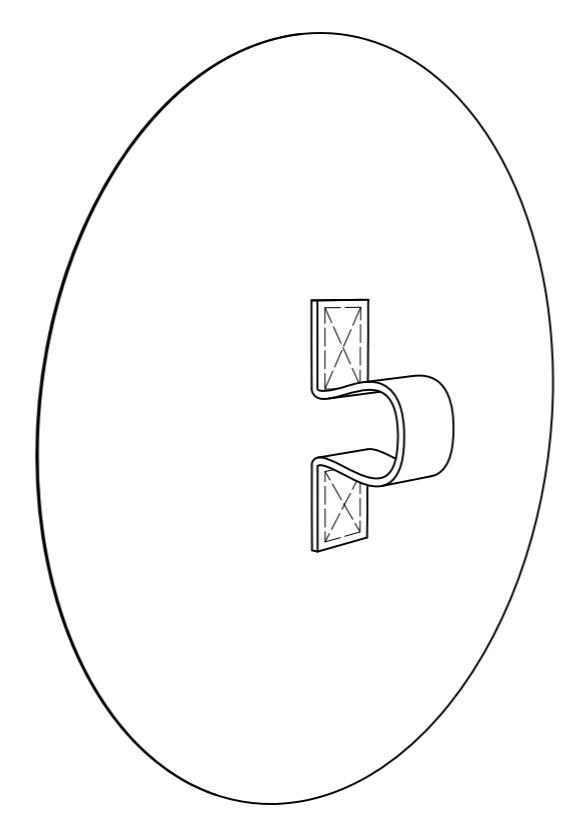
**GER
362
REG
308**



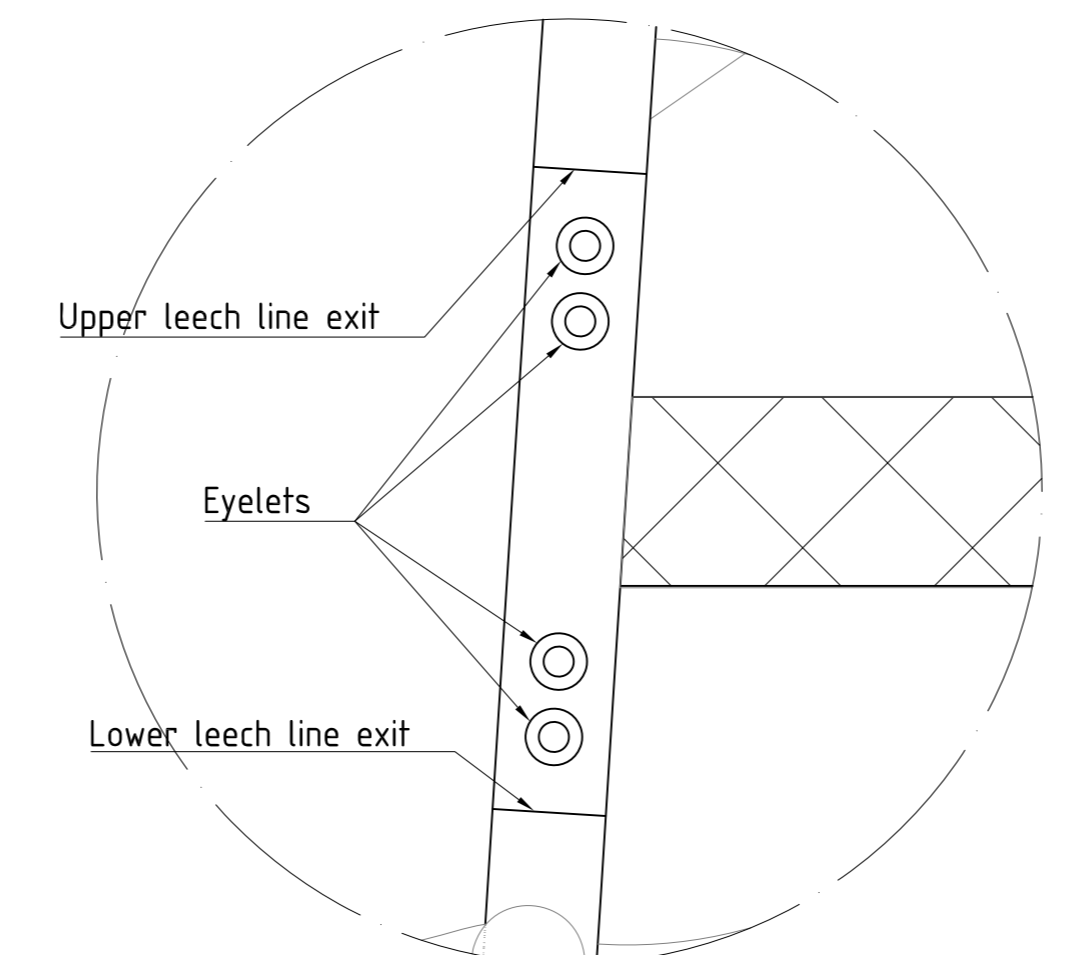
Detail G: Leech line cleat (1:2)



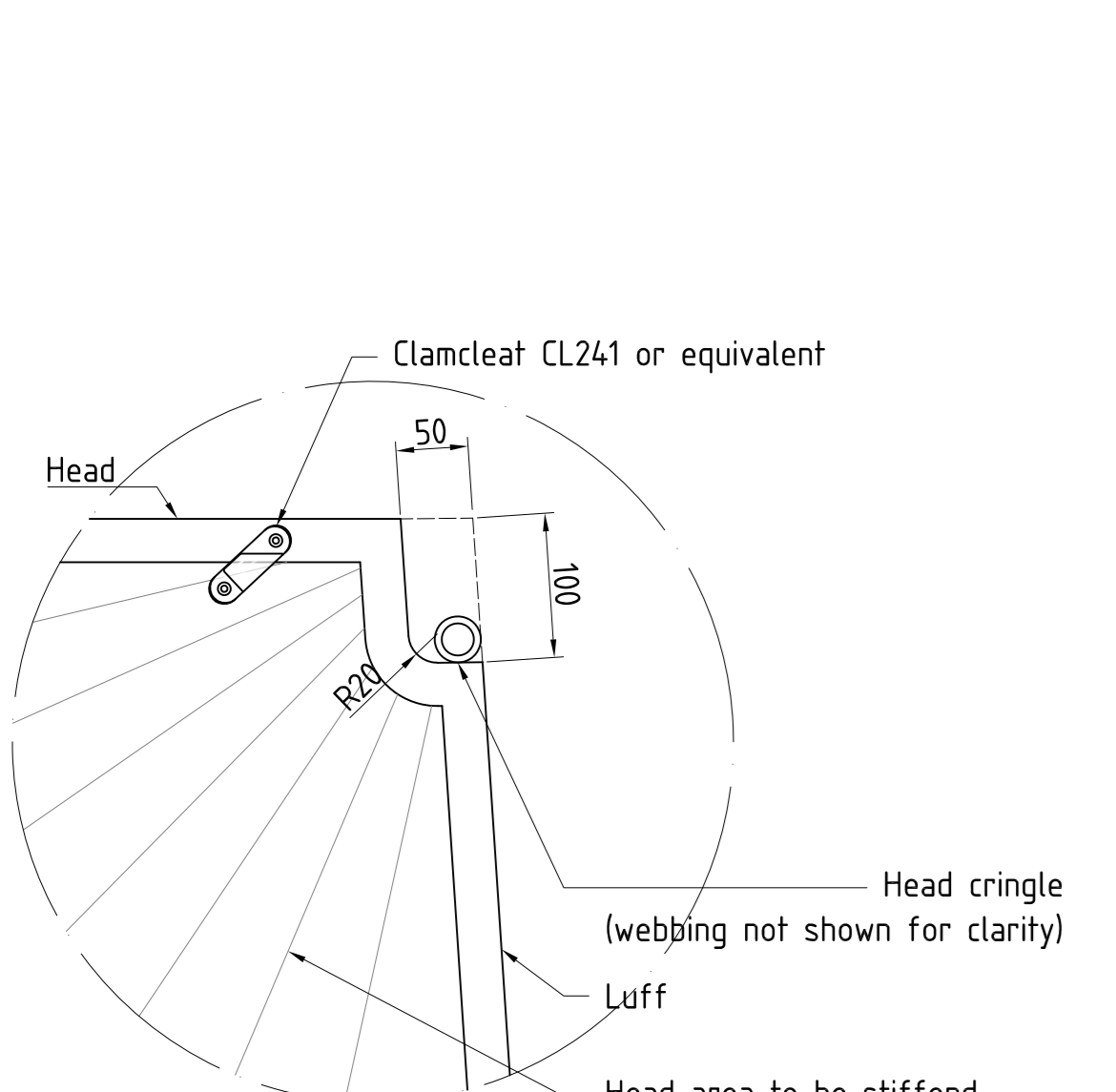
Detail H: Reef cringle (1:2)



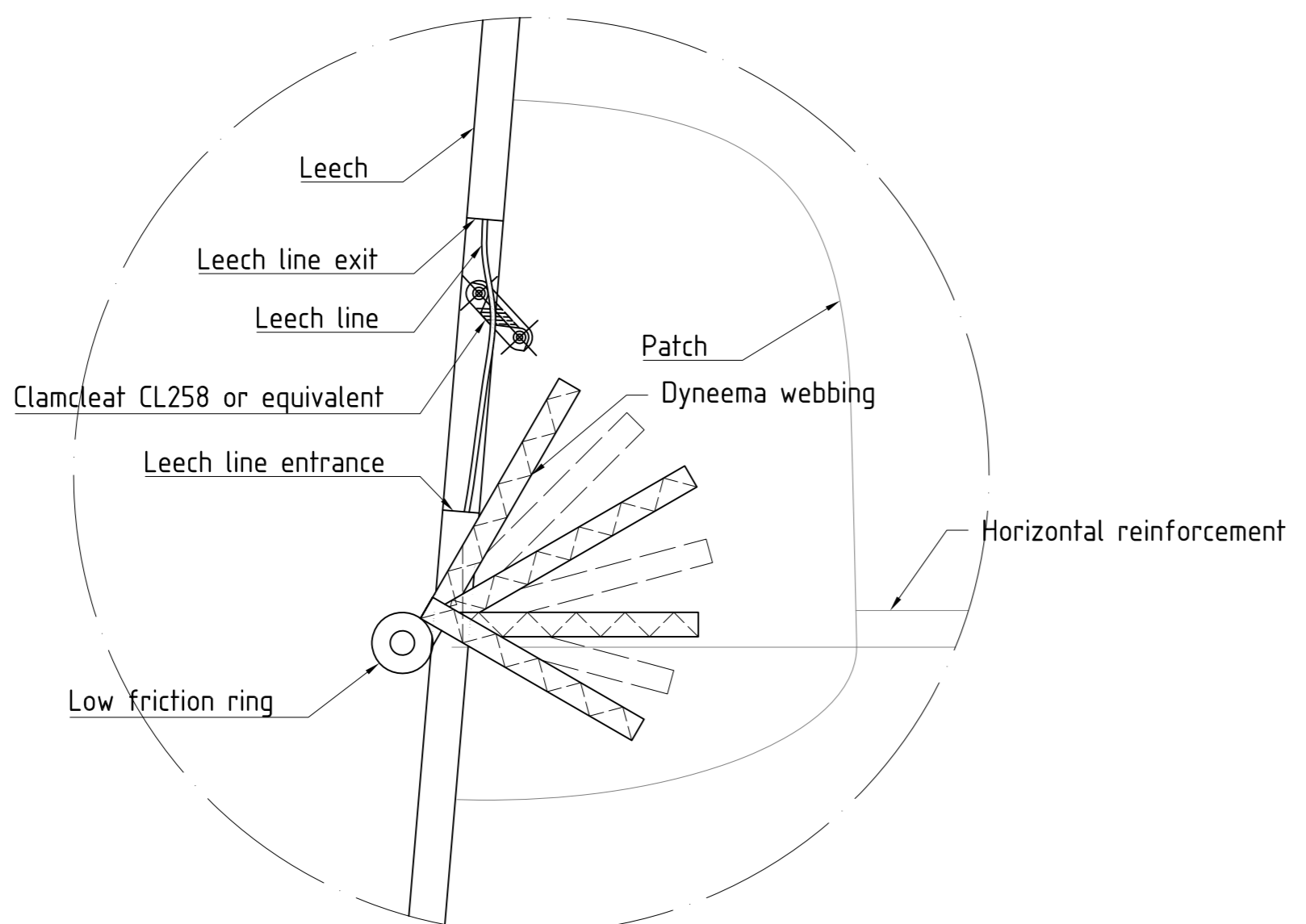
Isometric: Reef cringle



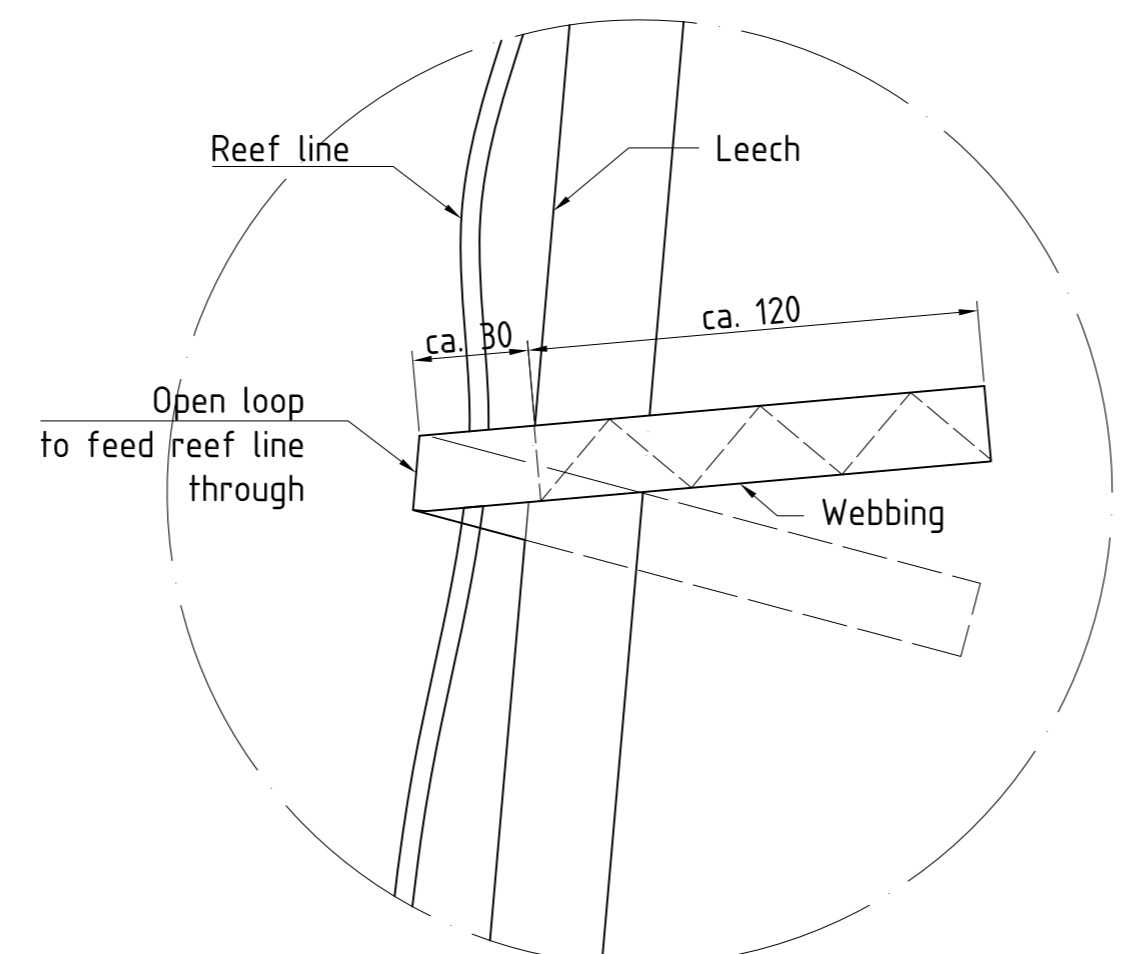
Detail J: Leech line termination eyelets (1:2)



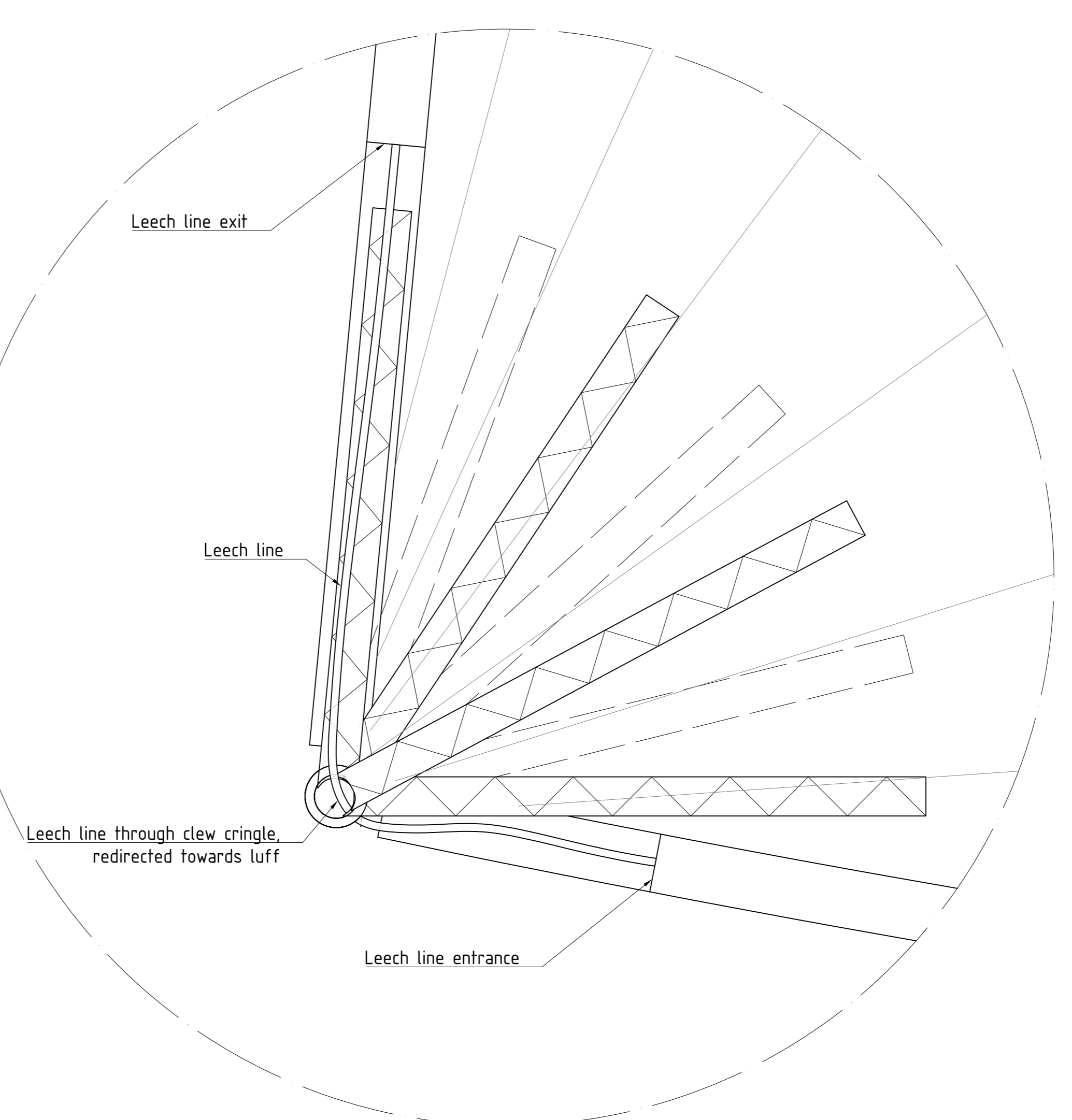
Detail X: Recessed head (1:5)



Detail Y: LFR for reef line (1:5)



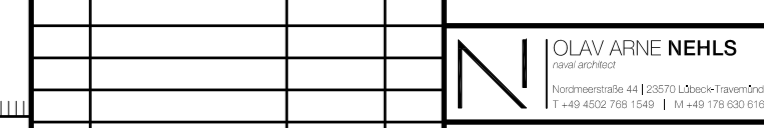
Detail Z: Reef line guide (1:2)



Detail F: Clew (1:2)

- ANNOTATIONS:**
- Sail profile to be very flat (max. camber $\leq 10\%$).
 - Luff round ca. 50 mm.
 - Foot round ca. 190 mm.
 - Hollow leech (ca. 40 mm) to enhance and promote twist.
 - 3 reefs at 1600 mm distance each.
 - Horizontal reinforcements between reef cringles.
 - Leech reef cringles to be low friction rings installed with webbing straps (refer to drawing for details).
 - Luff reef cringles to be eyelets with webbing/cringle dogbones.
 - Reef line guides made of webbing straps to be fitted half way between leech reef cringles.
 - Head cringle to be 100 mm below theoretical head point with recessed head area (refer to drawing for details).
 - Tri-radial panel pattern and corner patches as shown are for illustration purpose only; actual execution to be designed by the sailmaker.
 - Leech line led around clew cringle with cleat located approx. mid foot.
 - Full battens with Rutgerson 1590 receptacles or equivalent (must be suitable for M10 studs), batten cars (not shown in drawing) are customer's supply.
 - Full batten pockets to be closed at leech; battens to be inserted from luff side.
 - Short batten pocket to be open on leech side; batten to be tensioned by velcro inside the pocket.
 - Auxiliary battens in head area are fixed (non-removable).
 - Battens - except for auxiliary battens - are customer's supply.
 - Batten pockets to be fitted with anti-chafe material on both sides of the sail.
 - 10x Allen HA458 intermediate slugs or equivalent, fitted with plastic shackles, evenly distributed between full batten receptables; reef points to be taken into consideration.

- REFERENCE DOCUMENTS:**
- SC1-0639-80-101 SAIL PLAN (Rev. 01)
 - SC1-0639-80-105 DETAIL EXAMPLE PHOTOS

Refer to protection notice 602 9076	Standard ISO 2158 4x4	Surfcoat A0	Scale 1:50	Copyright
	Format	Date	Name	Title
	Drawn	06.10.2024	Haris	MAIN SAIL DIMENSIONS AND DETAILS
	Checked			
	Size			
		Drawing No.	SC1-0639-80-104	Sheet 1 of 1
Rev.	Modification	Date	Drawn	Checked