

Mainsail: 8001111 Will-1 MainsailV1.des

Design Info
=====

Design File:
\\NAS\Engineering files\Queenie-Customer Order\Fareast Sails\2024 Orders\Need to be Confirmed\8001111 Will Town

Initial Design Date: 10/12/2024
Boat:

Comments:

Client:

Design Data
=====

Main

Measurements

Luff geodesic: 10.919m
 Leech geodesic: 11.653m
 Foot geodesic: 4.227m
 Head geodesic: 0.115m
 Upper width (MUW): 0.825m
 Three-quarter width (MTW): 1.521m
 Half width (MHW): 2.649m
 Quarter width (MQW): 3.526m
 Foot median: 11.236m
 ORC Mainsail area: 26.944m?
 Surface area: 27.858m?
 Clew height: 0.100m
 Mast rake: 0.000m

Battens

Position	Length	Roach	Angle	Luff	Leech	Full
80.000%	1.345m	0.308m	68.760?	8.763m	9.280m	Full
60.000%	2.321m	0.402m	68.760?	6.609m	6.960m	Full
40.000%	3.071m	0.323m	68.760?	4.454m	4.640m	Full
20.000%	3.703m	0.182m	68.760?	2.299m	2.320m	Full

Reefing Points

1, Luff: 1.100m ; Leech: 1.147m ; Offset: 0.000m ; Number Eyelets: 4
 2, Luff: 2.600m ; Leech: 2.707m ; Offset: 0.000m ; Number Eyelets: 3

Draft Stripes

1, Luff: 3.602m ; Leech: 3.666m ;
 2, Luff: 7.205m ; Leech: 7.483m ;

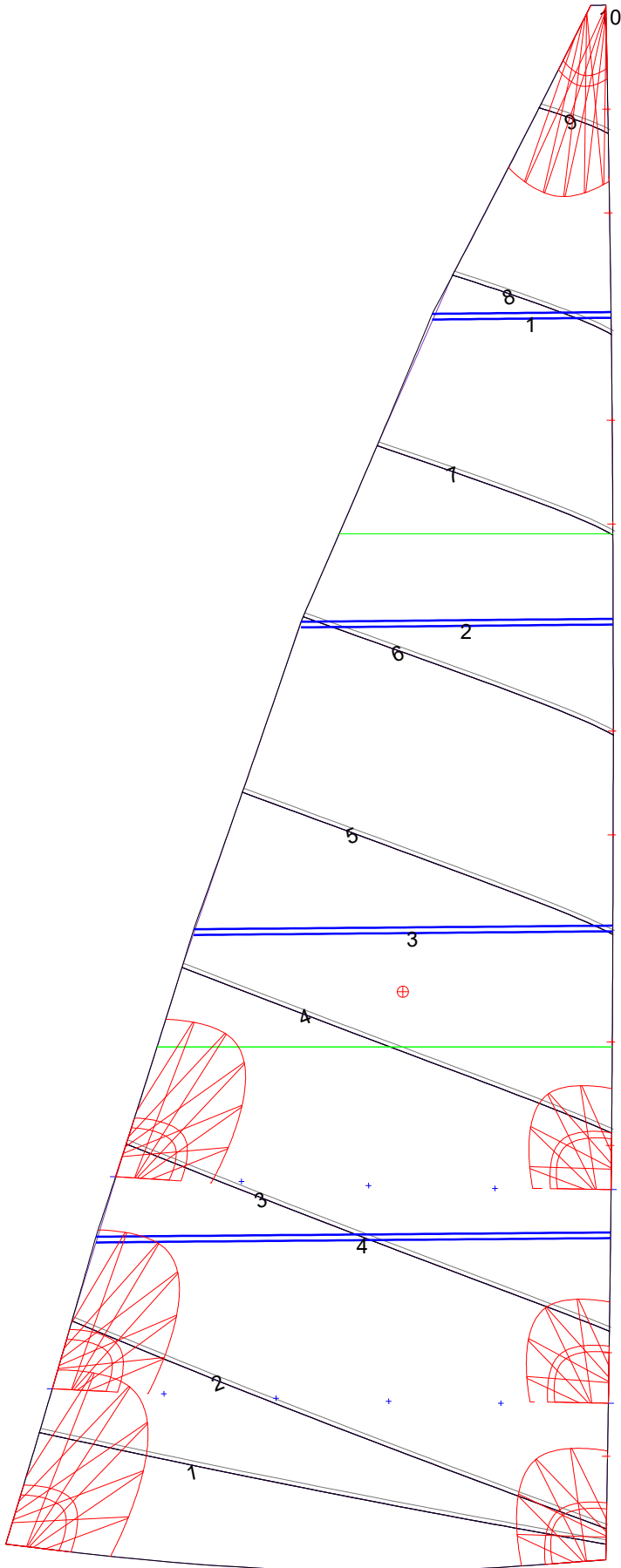
Luff Slides

1, Position: 0.727m
 2, Position: 1.455m
 3, Position: 2.909m
 4, Position: 3.637m
 5, Position: 5.092m
 6, Position: 5.819m
 7, Position: 7.275m
 8, Position: 8.003m
 9, Position: 9.460m
 10, Position: 10.189m

Luff Curve

		Fanned Luff (@ 5.00% [0.211m])	Before BSeam
10.919m,	0.000m	100% (10.919m) :	0.000m
9.558m,	-0.025m	90% (9.827m) :	0.015m
8.189m,	-0.043m	80% (8.735m) :	0.027m
6.817m,	-0.051m	70% (7.643m) :	0.033m
5.459m,	-0.052m	60% (6.551m) :	0.035m
4.068m,	-0.048m	50% (5.460m) :	0.035m
2.730m,	-0.038m	40% (4.368m) :	0.032m
1.361m,	-0.022m	30% (3.276m) :	0.027m
0.000m,	0.000m	20% (2.184m) :	0.019m
		10% (1.092m) :	0.009m
		0% (0.000m) :	0.000m

Mainsail: 8001111 Will-1 MainsailV1.des



Seam Allowances			
Zone: 1	Split	Radial	Cross
	0.030m	0.030m	0.030m

Edge Excesses			
Sail:	Luff	Leech	Foot
	0.000m	0.000m	0.000m

Total Seam Lengths (m)

Horizontal	24.24
Radial/Vertical	0.00
Bi-Radial Split	0.00

Materials

Material	Area (m ²)	Panels
Material 1	27.85	1,2,3,4,5 6,7,8,9,10