

# Genoa: 8001109 Wiebe-2 Headsail.des

Design Info  
=====

Design File:  
\\NAS\Engineering files\Queenie-Customer Order\Fareast Sails\2024 Orders\Need to be Confirmed\8001109 Wiebe P

Initial Design Date: 26/11/2024  
Boat:

Comments:

Client:

Design Data  
=====

## Genoa

### Measurements

Luff geodesic:	13.959m
Leech geodesic:	12.646m
Foot geodesic:	6.518m
Headboard width:	0.040m
Luff perpendicular (HLP):	5.943m
Upper width (HUW):	0.669m
Three-quarter width (HTW):	1.330m
Half width (HHW):	2.778m
Quarter width (HQW):	4.323m
Foot median:	13.064m
ORC Headsail area:	40.007m?
IRC Headsail area:	39.931m?
Surface area:	40.173m?
Forestay height:	14.480m
J:	5.660m

### Draft Stripes

- 1, Luff: 3.509m ; Leech: 2.814m ;
- 2, Luff: 7.018m ; Leech: 6.092m ;
- 3, Luff: 10.508m ; Leech: 9.337m ;

### Luff Curve

13.956m,	0.000m
12.796m,	0.047m
11.514m,	0.086m
10.385m,	0.105m
9.072m,	0.113m
6.945m,	0.099m
4.536m,	0.067m
2.359m,	0.034m
0.000m,	0.000m

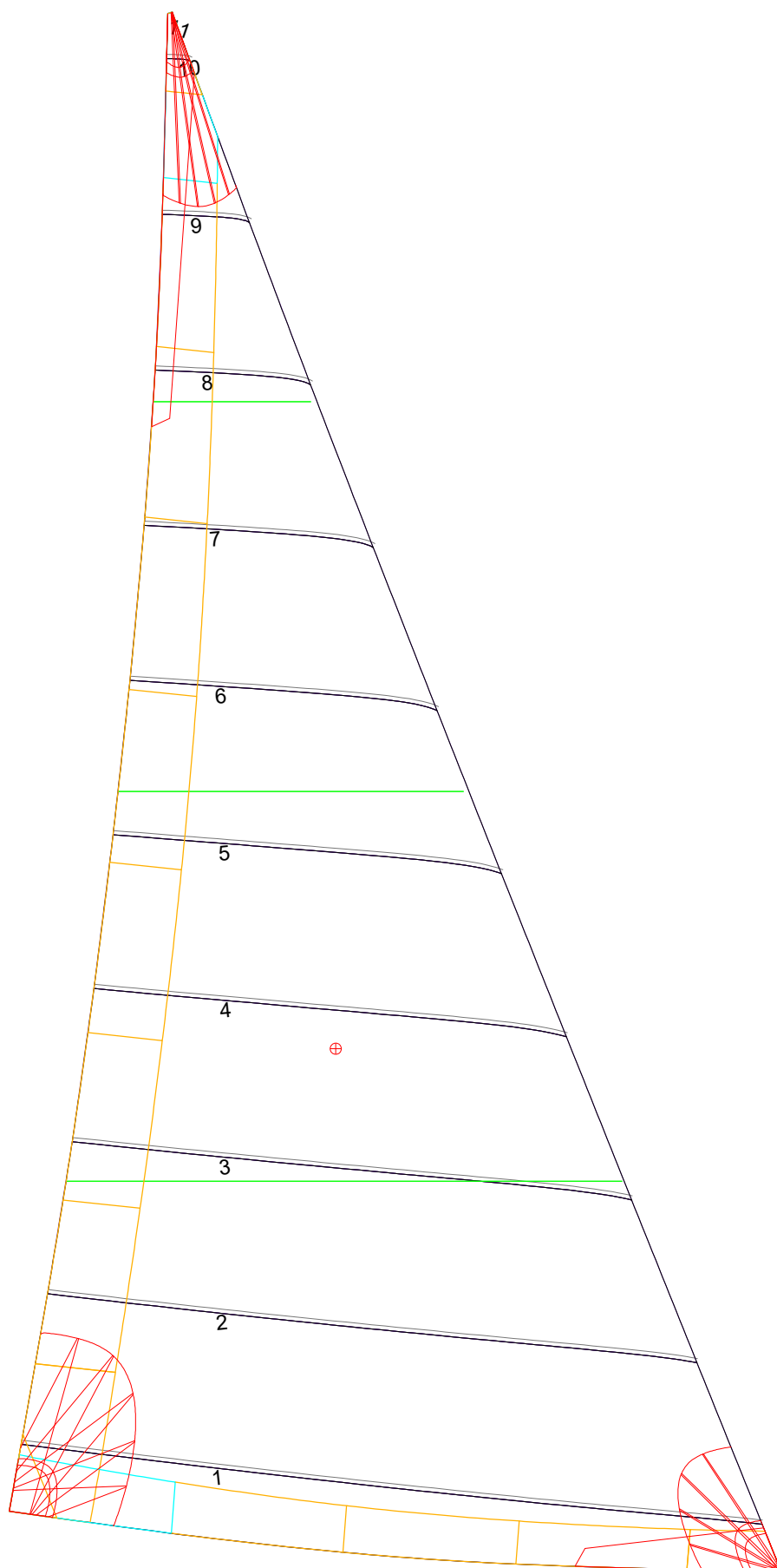
### Fanned Luff (@ 5.00% [0.322m])

100% (13.957m) :	0.000m
90% (12.560m) :	-0.051m
80% (11.167m) :	-0.089m
70% (9.770m) :	-0.109m
60% (8.375m) :	-0.113m
50% (6.979m) :	-0.105m
40% (5.583m) :	-0.089m
30% (4.187m) :	-0.069m
20% (2.792m) :	-0.048m
10% (1.394m) :	-0.025m
0% (0.000m) :	0.000m

### Before BSeam

0.000m
-0.006m
-0.005m
0.006m
0.021m
0.035m
0.044m
0.046m
0.040m
0.026m
0.000m

# Genoa: 8001109 Wiebe-2 Headsail.des



## Seam Allowances

Zone:	Split	Radial	Cross
Zone: 1	0.035m	0.035m	0.035m
Cover 1	0.025m	0.025m	0.025m
Cover 2	0.025m	0.025m	0.025m
Cover 3	0.000m	0.000m	0.000m
Cover 4	0.000m	0.000m	0.000m

## Edge Excesses

	Luff	Leech	Foot
Sail:	0.000m	0.000m	0.000m
Cover 0	0.070m	0.100m	0.070m
Cover 1	0.070m	0.070m	0.100m
Cover 2	0.000m	0.070m	0.070m
Cover 3	0.000m	0.070m	0.070m

## Total Seam Lengths (m)

Horizontal	31.37
Radial/Vertical	0.00
Bi-Radial Split	0.00

## Materials

Material	Area (m <sup>2</sup> )	Panels
Material 1	40.28	1,2,3,4,5 6,7,8,9,10 11