

Genoa: 8001024 Andrew-2 triradial HeadsailV1.des

Design Info
=====

Design File:
\\NAS\Engineering files\Queenie-Customer Order\Fareast Sails\2024 Orders\Need to be Confirmed\8001024 Andrew m

Initial Design Date: 8/11/2024
Boat:

Comments:
webbing loop 30mm at head and tack.
luff length in sail plus webbing loops will be 17.70mtr.

Client:

Design Data
=====

Genoa

Measurements

Luff geodesic: 17.622m
Leech geodesic: 16.900m
Foot geodesic: 5.380m
Headboard width: 0.050m
Luff perpendicular (HLP): 5.167m
Upper width (HUW): 0.528m
Three-quarter width (HTW): 1.049m
Half width (HHW): 2.274m
Quarter width (HQW): 3.650m
Foot median: 17.176m
ORC Headsail area: 42.505m?
IRC Headsail area: 42.416m?
Surface area: 42.306m?
Forestay height: 17.650m
J: 4.990m

Draft Stripes

1, Luff: 4.419m ; Leech: 4.157m ;
2, Luff: 8.837m ; Leech: 8.399m ;
3, Luff: 13.243m ; Leech: 12.626m ;

Luff Curve

17.620m, 0.000m
16.156m, 0.044m
14.537m, 0.080m
13.111m, 0.099m
11.454m, 0.106m
8.768m, 0.093m
5.727m, 0.063m
2.978m, 0.031m
0.000m, 0.000m

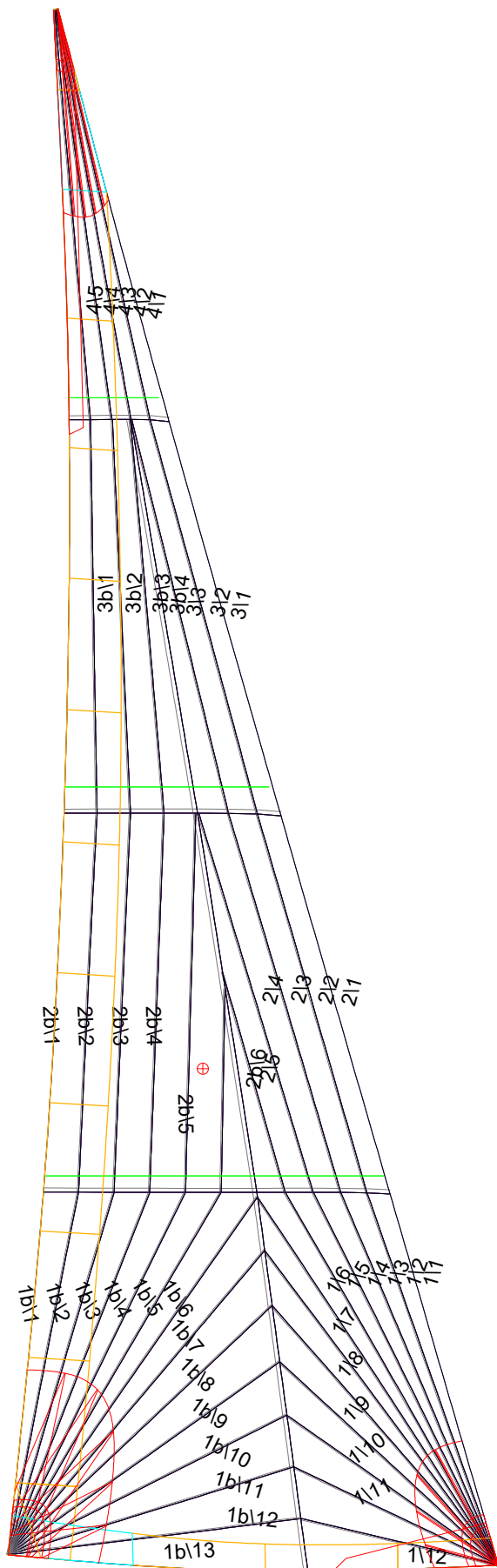
Fanned Luff (@ 5.00% [0.267m])

100% (17.620m) : 0.000m
90% (15.857m) : -0.046m
80% (14.098m) : -0.079m
70% (12.335m) : -0.097m
60% (10.573m) : -0.100m
50% (8.810m) : -0.093m
40% (7.048m) : -0.079m
30% (5.286m) : -0.062m
20% (3.525m) : -0.043m
10% (1.761m) : -0.022m
0% (0.000m) : 0.000m

Before BSeam

-0.000m
-0.016m
-0.022m
-0.018m
-0.006m
0.006m
0.016m
0.020m
0.021m
0.015m
0.000m

Genoa: 8001024 Andrew-2 triradial HeadsailV1.des



Seam Allowances

| | Split | Radial | Cross |
|-----------|--------|--------|--------|
| Zone: 1/a | 0.045m | 0.015m | 0.045m |
| Zone: 1/b | 0.045m | 0.015m | 0.045m |
| Zone: 2/a | 0.045m | 0.015m | 0.045m |
| Zone: 2/b | 0.045m | 0.015m | 0.045m |
| Zone: 3/a | 0.045m | 0.015m | 0.045m |
| Zone: 3/b | 0.045m | 0.015m | 0.045m |
| Zone: 4 | 0.045m | 0.015m | 0.045m |
| Cover 1 | 0.025m | 0.025m | 0.025m |
| Cover 2 | 0.025m | 0.025m | 0.025m |
| Cover 3 | 0.000m | 0.000m | 0.000m |
| Cover 4 | 0.000m | 0.000m | 0.000m |

Edge Excesses

| | Luff | Leech | Foot |
|---------|--------|--------|--------|
| Sail: | 0.000m | 0.000m | 0.000m |
| Cover 0 | 0.070m | 0.100m | 0.070m |
| Cover 1 | 0.070m | 0.070m | 0.100m |
| Cover 2 | 0.000m | 0.070m | 0.070m |
| Cover 3 | 0.000m | 0.070m | 0.070m |

Total Seam Lengths (m)

| | |
|-----------------|--------|
| Horizontal | 7.52 |
| Radial/Vertical | 165.01 |
| Bi-Radial Split | 13.13 |

Materials

| Material | Area (m ²) | Panels |
|------------|------------------------|--|
| Material 1 | 42.40 | 1\1,1\2,1\3,1\4,1\5 1\6,1\7,1\8,1\9,1\10 1\11,1\12,1b\1,1b\2,1b\3 1b\4,1b\5,1b\6,1b\7,1b\8 1b\9,1b\10,1b\11,1b\12,1b\13 2\1,2\2,2\3,2\4,2\5 2b\6,2b\5,2b\4,2b\3,2b\2 2b\1,3\1,3\2,3\3,3b\4 3b\3,3b\2,3b\1,4\1,4\2 4\3,4\4,4\5 |