

# Mainsail: 8001005 Manuel fullbattmainV1.des

Design Info  
=====

Design File:  
\\NAS\Engineering files\Queenie-Customer Order\Fareast Sails\2024 Orders\Need to be Confirmed\8001005 Manuel m

Initial Design Date: 7/11/2024  
Boat:

Comments:

Client:

Design Data  
=====

Main

Measurements

Luff geodesic: 12.620m  
 Leech geodesic: 13.316m  
 Foot geodesic: 4.450m  
 Head geodesic: 0.160m  
 Upper width (MUW): 0.957m  
 Three-quarter width (MTW): 1.710m  
 Half width (MHW): 2.920m  
 Quarter width (MQW): 3.800m  
 Foot median: 12.915m  
 ORC Mainsail area: 33.901m?  
 Surface area: 34.841m?  
 Clew height: 0.100m  
 Mast rake: 0.000m

Battens

Position	Length	Roach	Angle	Luff	Leech	Full
82.000%	1.389m	0.262m	72.608?	10.332m	10.873m	Full
62.000%	2.453m	0.346m	72.608?	7.809m	8.221m	Full
42.000%	3.278m	0.303m	72.608?	5.288m	5.569m	Full
22.000%	3.899m	0.171m	72.608?	2.769m	2.917m	Full

Reefing Points

1, Luff: 1.539m ; Leech: 1.598m ; Offset: 0.000m ; Number Eyelets: 3  
 2, Luff: 3.343m ; Leech: 3.465m ; Offset: 0.000m ; Number Eyelets: 3

Draft Stripes

1, Luff: 3.153m ; Leech: 3.166m ;  
 2, Luff: 6.306m ; Leech: 6.466m ;  
 3, Luff: 9.458m ; Leech: 9.803m ;

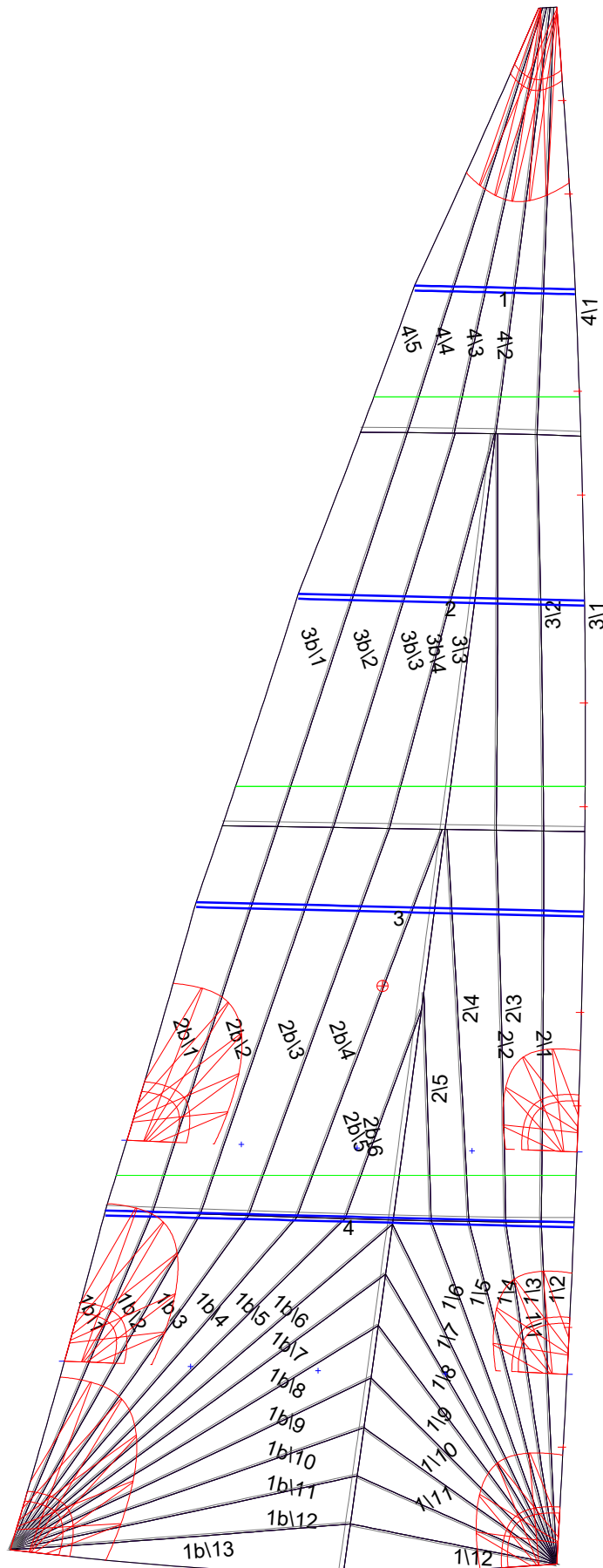
Luff Slides

1, Position: 0.949m  
 2, Position: 1.918m  
 3, Position: 3.715m  
 4, Position: 4.473m  
 5, Position: 6.138m  
 6, Position: 6.979m  
 7, Position: 8.661m  
 8, Position: 9.502m  
 9, Position: 11.102m  
 10, Position: 11.861m

Luff Curve

		Fanned Luff (@ 5.00% [0.221m])	Before BSeam
12.615m,	0.000m	100% (12.620m) :	0.000m
11.043m,	-0.112m	90% (11.360m) :	0.112m
9.461m,	-0.183m	80% (10.097m) :	0.202m
7.875m,	-0.224m	70% (8.835m) :	0.261m
6.308m,	-0.230m	60% (7.573m) :	0.296m
4.700m,	-0.206m	50% (6.310m) :	0.302m
3.154m,	-0.156m	40% (5.048m) :	0.283m
1.572m,	-0.085m	30% (3.785m) :	0.238m
0.000m,	0.000m	20% (2.523m) :	0.172m
		10% (1.262m) :	0.089m
		0% (0.000m) :	0.000m

# Mainsail: 8001005 Manuel fullbattmainV1.des



## Seam Allowances

Zone:	Split	Radial	Cross
Zone: 1/a	0.040m	0.015m	0.040m
Zone: 1/b	0.040m	0.015m	0.040m
Zone: 2/a	0.040m	0.015m	0.040m
Zone: 2/b	0.040m	0.015m	0.040m
Zone: 3/a	0.040m	0.015m	0.040m
Zone: 3/b	0.040m	0.015m	0.040m
Zone: 4	0.040m	0.015m	0.040m

## Edge Excesses

Sail:	Luff	Leech	Foot
	0.000m	0.000m	0.000m

## Total Seam Lengths (m)

Horizontal	8.87
Radial/Vertical	125.70
Bi-Radial Split	9.68

## Materials

Material	Area (m <sup>2</sup> )	Panels
Material 1	34.84	1\1,1\2,1\3,1\4,1\5 1\6,1\7,1\8,1\9,1\10 1\11,1\12,1b\1,1b\2,1b\3 1b\4,1b\5,1b\6,1b\7,1b\8 1b\9,1b\10,1b\11,1b\12,1b\13 2\1,2\2,2\3,2\4,2\5 2b\6,2b\5,2b\4,2b\3,2b\2 2b\1,3\1,3\2,3\3,3b\4 3b\3,3b\2,3b\1,4\1,4\2 4\3,4\4,4\5