

Mainsail: 8001002 Gaute LEOPARD 48 MainsailV2.des

Design Info
=====

Design File:
\\NAS\Engineering files\Queenie-Customer Order\Fareast Sails\2024 Orders\Need to be Confirmed\8001002 Gaute LE

Initial Design Date: 15/10/2024
Boat:
LEOPARD 48
Client:

Comments:
Tack angle 81 deg, mast rake 1739mm

Design Data
=====

Main

Measurements

Luff geodesic: 17.226m
Leech geodesic: 17.673m
Foot geodesic: 6.880m
Head geodesic: 0.200m
Upper width (MUW): 1.849m
Three-quarter width (MTW): 3.367m
Half width (MHW): 5.429m
Quarter width (MQW): 6.348m
Foot median: 17.328m
ORC Mainsail area: 80.603m?
Surface area: 85.072m?
Clew height: 1.107m
Mast rake: 1.739m

Battens

Position	Length	Roach	Angle	Luff	Leech	Full
84.392%	2.755m	1.385m	76.891?	14.578m	14.784m	Full
68.000%	4.485m	1.894m	76.891?	11.743m	11.912m	Full
52.000%	5.522m	1.824m	76.891?	8.978m	9.110m	Full
36.000%	6.170m	1.444m	76.891?	6.213m	6.307m	Full
20.000%	6.528m	0.829m	76.891?	3.449m	3.504m	Full

Reefing Points

1, Luff: 2.578m ; Leech: 2.573m ; Offset: 0.000m ; Number Eyelets: 0
2, Luff: 5.158m ; Leech: 5.141m ; Offset: 0.000m ; Number Eyelets: 0
3, Luff: 7.740m ; Leech: 7.704m ; Offset: 0.000m ; Number Eyelets: 0

Draft Stripes

1, Luff: 4.298m ; Leech: 3.921m ;
2, Luff: 8.601m ; Leech: 8.247m ;
3, Luff: 12.909m ; Leech: 12.651m ;

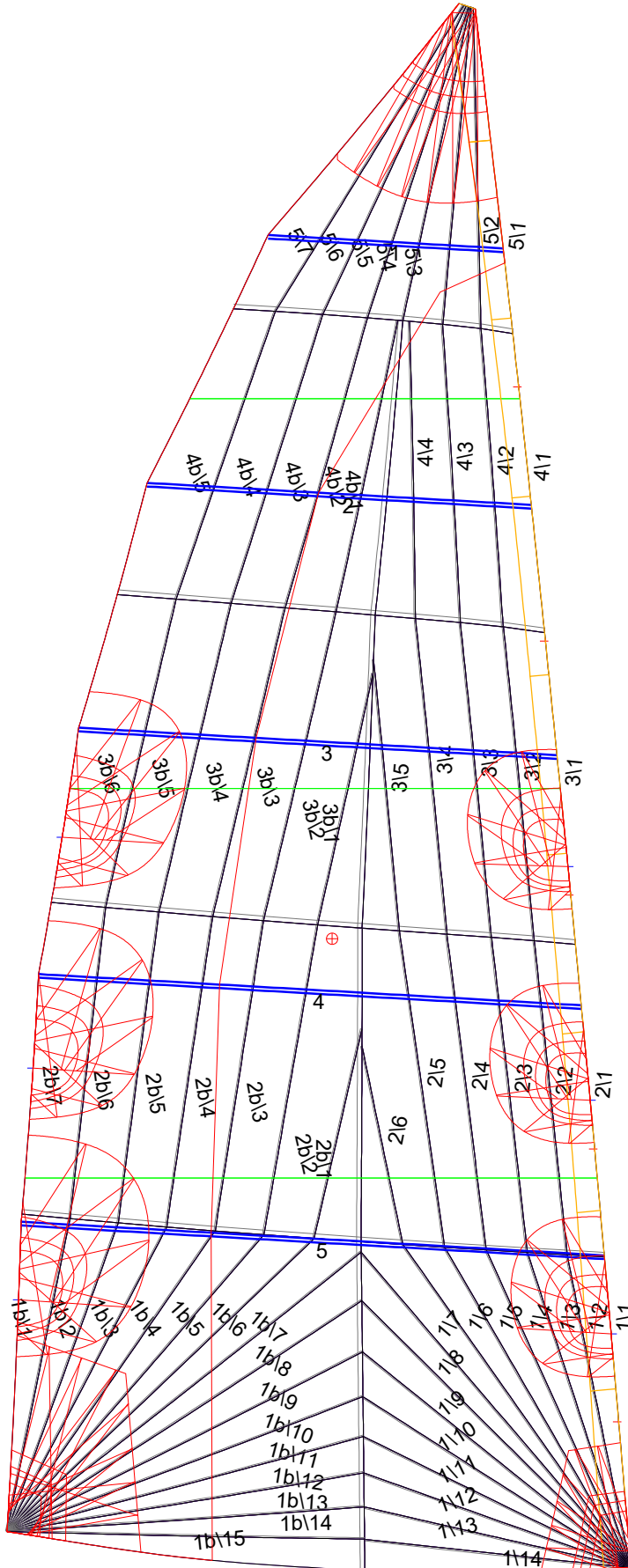
Luff Slides

1, Position: 1.609m
2, Position: 4.620m
3, Position: 7.424m
4, Position: 10.231m
5, Position: 13.041m

Luff Curve

		Fanned Luff (@ 5.00% [0.343m])	Before BSeam
17.225m,	0.000m	100% (17.226m) :	0.000m
15.079m,	-0.036m	90% (15.505m) :	0.019m
12.919m,	-0.062m	80% (13.780m) :	0.145m
10.754m,	-0.075m	70% (12.059m) :	0.196m
8.613m,	-0.078m	60% (10.336m) :	0.215m
6.418m,	-0.072m	50% (8.613m) :	0.211m
4.306m,	-0.058m	40% (6.890m) :	0.184m
2.147m,	-0.033m	30% (5.168m) :	0.144m
0.000m,	0.000m	20% (3.445m) :	0.096m
		10% (1.724m) :	0.012m
		0% (0.000m) :	0.000m

Mainsail: 8001002 Gaute LEOPARD 48 MainsailV2.des



Seam Allowances

	Split	Radial	Cross
Zone: 1/a	0.050m	0.016m	0.050m
Zone: 1/b	0.050m	0.016m	0.050m
Zone: 2/a	0.050m	0.016m	0.050m
Zone: 2/b	0.050m	0.016m	0.050m
Zone: 3/a	0.050m	0.016m	0.050m
Zone: 3/b	0.050m	0.016m	0.050m
Zone: 4/a	0.050m	0.016m	0.050m
Zone: 4/b	0.050m	0.016m	0.050m
Zone: 5	0.050m	0.016m	0.050m
Cover 1	0.038m	0.038m	0.038m

Edge Excesses

	Luff	Leech	Foot
Sail:	0.000m	0.000m	0.000m
Cover 0	0.000m	0.000m	0.000m

Total Seam Lengths (m)

Horizontal	20.78
Radial/Vertical	219.82
Bi-Radial Split	14.37

Materials

Material	Area (m ²)	Panels
Material 1	85.06	1\1,1\2,1\3,1\4,1\5 1\6,1\7,1\8,1\9,1\10 1\11,1\12,1\13,1\14,1b\1 1b\2,1b\3,1b\4,1b\5,1b\6 1b\7,1b\8,1b\9,1b\10,1b\11 1b\12,1b\13,1b\14,1b\15,2\1 2\2,2\3,2\4,2\5,2\6 2b\1,2b\2,2b\3,2b\4,2b\5 2b\6,2b\7,3\1,3\2,3\3 3\4,3\5,3b\1,3b\2,3b\3 3b\4,3b\5,3b\6,4\1,4\2 4\3,4\4,4b\1,4b\2,4b\3 4b\4,4b\5,5\1,5\2,5\3 5\4,5\5,5\6,5\7