

# Genoa: 8000908-2 Ryan Ben 351 head.des

## Design Info

=====

Initial Design Date: 11/9/2024  
Boat:  
Lagoon 400 S2  
Client:

## Design File:

\\NAS\Engineering files\Queenie-Customer Order\Fareast Sails\2024 Orders\Need to be Confirmed\8000908 Ryan Ben

Comments:

## Design Data

=====

### Genoa

#### Measurements

Luff geodesic:	33.566Ft
Leech geodesic:	33.189Ft
Foot geodesic:	16.634Ft
Headboard width:	0.115Ft
Luff perpendicular (HLP):	16.116Ft
Upper width (HUW):	1.868Ft
Three-quarter width (HTW):	3.709Ft
Half width (HHW):	7.736Ft
Quarter width (HQW):	11.940Ft
Foot median:	32.941Ft
ORC Headsail area:	264.821Ft?
IRC Headsail area:	263.794Ft?
Surface area:	267.115Ft?
Forestay height:	41.493Ft
J:	12.402Ft

#### Draft Stripes

1, Luff: 8.421Ft ; Leech: 8.516Ft ;  
2, Luff: 16.822Ft ; Leech: 16.774Ft ;  
3, Luff: 25.203Ft ; Leech: 24.912Ft ;

#### Luff Curve

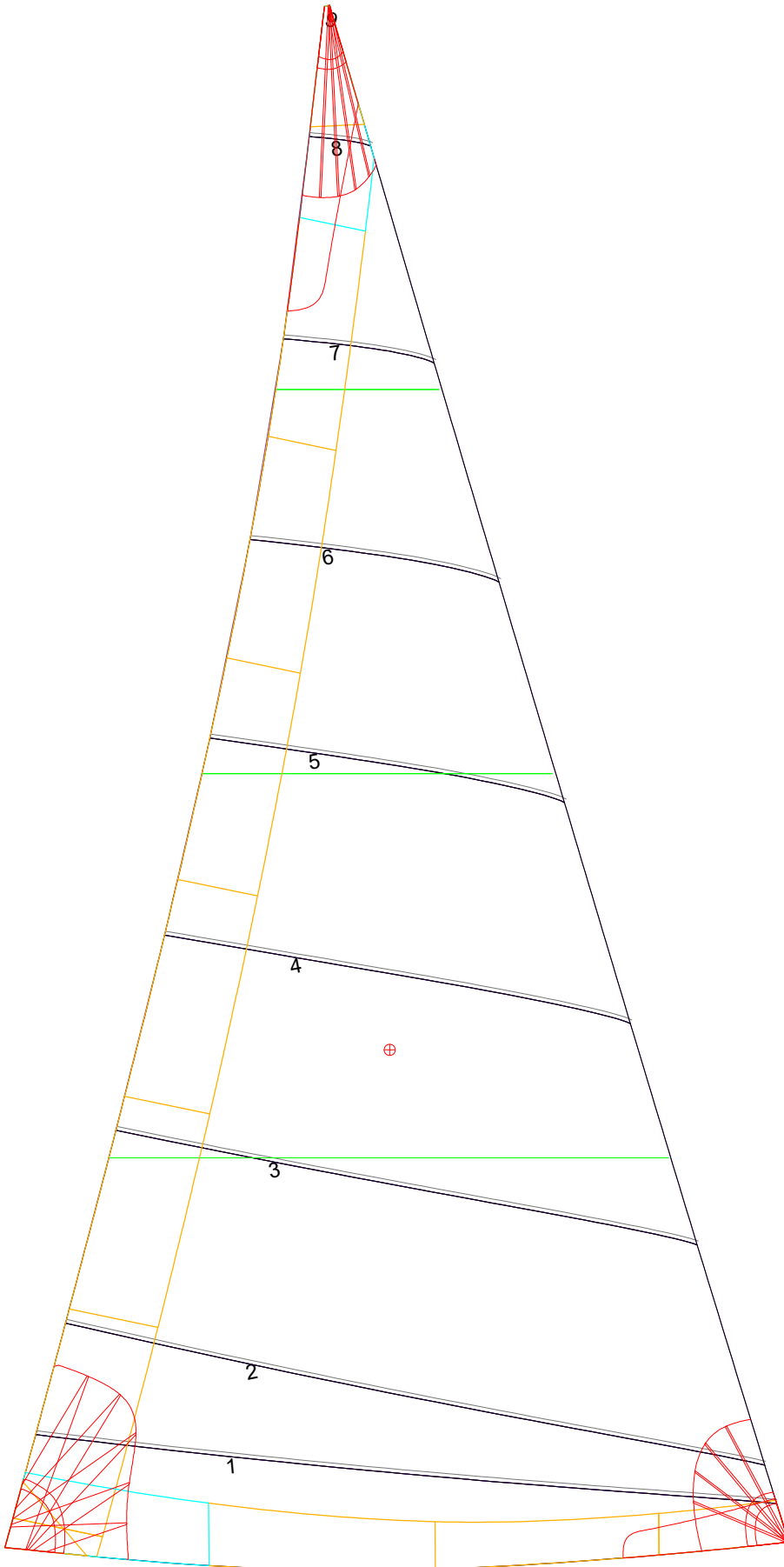
33.565Ft,	0.000Ft
25.174Ft,	0.098Ft
16.784Ft,	0.131Ft
8.391Ft,	0.098Ft
0.000Ft,	0.000Ft

#### Fanned Luff (@ 5.00% [0.820Ft])

100% (33.565Ft) :	0.000Ft	0.000Ft
90% (30.207Ft) :	-0.039Ft	0.063Ft
80% (26.853Ft) :	-0.075Ft	0.127Ft
70% (23.495Ft) :	-0.103Ft	0.187Ft
60% (20.139Ft) :	-0.122Ft	0.233Ft
50% (16.782Ft) :	-0.131Ft	0.254Ft
40% (13.426Ft) :	-0.131Ft	0.247Ft
30% (10.069Ft) :	-0.120Ft	0.215Ft
20% (6.714Ft) :	-0.094Ft	0.156Ft
10% (3.354Ft) :	-0.053Ft	0.075Ft
0% (0.000Ft) :	0.000Ft	0.000Ft

#### Before BSeam

# Genoa: 8000908-2 Ryan Ben 351 head.des



## Seam Allowances

Zone:	Split	Radial	Cross
Zone: 1	0.000Ft	0.000Ft	0.082Ft
Cover 1	0.082Ft	0.082Ft	0.082Ft
Cover 2	0.082Ft	0.082Ft	0.082Ft
Cover 3	0.082Ft	0.082Ft	0.082Ft
Cover 4	0.082Ft	0.082Ft	0.082Ft

## Edge Excesses

Sail:	Luff	Leech	Foot
Sail:	0.000Ft	0.000Ft	0.000Ft
Cover 0	0.328Ft	0.328Ft	0.328Ft
Cover 1	0.328Ft	0.328Ft	0.328Ft
Cover 2	0.230Ft	0.328Ft	0.230Ft
Cover 3	0.230Ft	0.328Ft	0.230Ft

## Total Seam Lengths (Ft)

Horizontal	72.96
Radial/Vertical	0.00
Bi-Radial Split	0.00

## Materials

Material	Area (Ft <sup>2</sup> )	Panels
Material 1	267.81	1,2,3,4,5 6,7,8,9