

Genoa: 8000902 Lars jib.des

Design Info
=====

Design File:
\\NAS\Engineering files\Queenie-Customer Order\Fareast Sails\2024 Orders\Need to be Confirmed\8000902 Lars head

Initial Design Date: 21/10/2024
Boat:

Comments:

Client:

Design Data
=====

Genoa

Measurements

Luff geodesic:	7.920m
Leech geodesic:	7.347m
Foot geodesic:	2.427m
Headboard width:	0.040m
Luff perpendicular (HLP):	2.244m
Upper width (HUW):	0.259m
Three-quarter width (HTW):	0.489m
Half width (HHW):	1.017m
Quarter width (HQW):	1.600m
Foot median:	7.612m
ORC Headsail area:	8.455m?
IRC Headsail area:	8.446m?
Surface area:	8.510m?
Forestay height:	8.310m
J:	2.040m

Draft Stripes

1, Luff: 3.971m ; Leech: 3.489m ;

Luff Curve

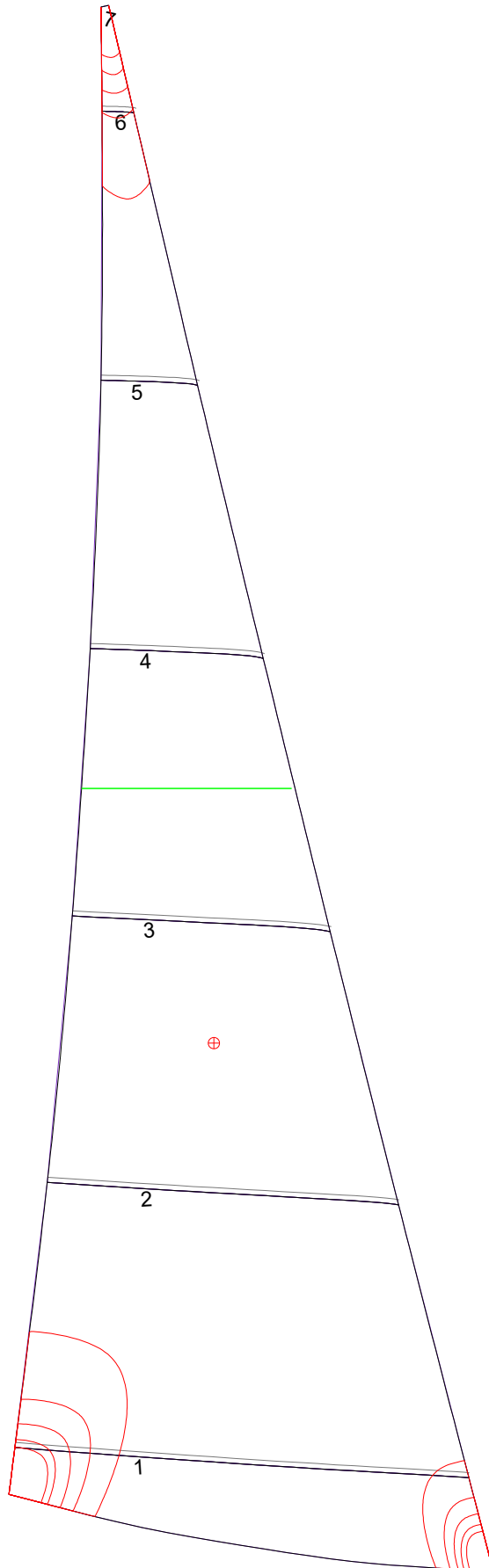
7.919m,	0.000m
6.331m,	0.034m
4.744m,	0.046m
3.160m,	0.042m
1.579m,	0.027m
0.000m,	0.000m

Fanned Luff (@ 5.00% [0.119m])

100% (7.919m) :	-0.000m	0.000m
90% (7.127m) :	-0.016m	-0.001m
80% (6.336m) :	-0.031m	-0.003m
70% (5.544m) :	-0.042m	-0.003m
60% (4.752m) :	-0.047m	-0.001m
50% (3.960m) :	-0.047m	0.001m
40% (3.168m) :	-0.045m	0.002m
30% (2.376m) :	-0.040m	0.002m
20% (1.584m) :	-0.030m	0.001m
10% (0.791m) :	-0.016m	0.001m
0% (0.000m) :	0.000m	0.000m

Before BSeam

Genoa: 8000902 Lars jib.des



Seam Allowances			
	Split	Radial	Cross
Zone: 1	0.025m	0.025m	0.025m

Edge Excesses			
Sail:	Luff	Leech	Foot
	0.000m	0.000m	0.000m

Total Seam Lengths (m)

Horizontal	6.94
Radial/Vertical	0.00
Bi-Radial Split	0.00

Materials

Material	Area (m ²)	Panels
Material 1	8.52	1,2,3,4,5 6,7