

Genoa: 8000711 Hank Headsail.des

Design Info
=====

Design File:
\\NAS\Engineering files\Queenie-Customer Order\Fareast Sails\2024 Orders\Need to be Confirmed\8000711 Hank head

Initial Design Date: 15/8/2024
Boat:

Comments:

Client:

Design Data
=====

Genoa

Measurements

Luff geodesic:	48.511Ft
Leech geodesic:	44.117Ft
Foot geodesic:	18.603Ft
Headboard width:	0.164Ft
Luff perpendicular (HLP):	17.002Ft
Upper width (HUW):	1.886Ft
Three-quarter width (HTW):	3.711Ft
Half width (HHW):	7.793Ft
Quarter width (HQW):	12.235Ft
Foot median:	45.821Ft
ORC Headsail area:	393.817Ft?
IRC Headsail area:	393.142Ft?
Surface area:	394.487Ft?
Forestay height:	49.500Ft
J:	15.456Ft

Draft Stripes

- 1, Luff: 12.168Ft ; Leech: 9.201Ft ;
- 2, Luff: 24.334Ft ; Leech: 20.847Ft ;
- 3, Luff: 36.464Ft ; Leech: 32.406Ft ;

Luff Curve

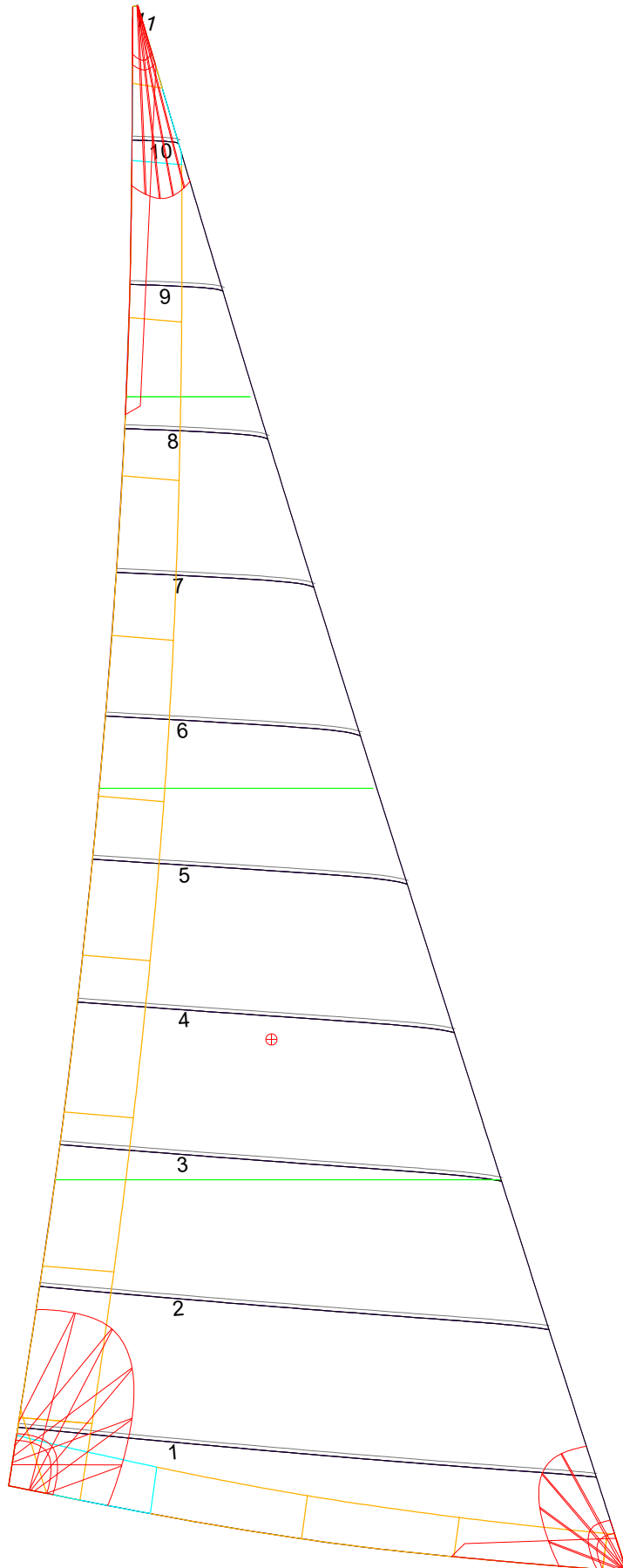
48.505Ft,	0.000Ft
44.474Ft,	0.122Ft
40.017Ft,	0.221Ft
36.093Ft,	0.272Ft
31.529Ft,	0.291Ft
24.138Ft,	0.255Ft
15.764Ft,	0.173Ft
8.199Ft,	0.087Ft
0.000Ft,	0.000Ft

Fanned Luff (@ 5.00% [0.914Ft])

100% (48.506Ft) :	0.000Ft	0.000Ft
90% (43.655Ft) :	-0.128Ft	-0.015Ft
80% (38.808Ft) :	-0.225Ft	-0.010Ft
70% (33.955Ft) :	-0.276Ft	0.017Ft
60% (29.105Ft) :	-0.287Ft	0.056Ft
50% (24.254Ft) :	-0.267Ft	0.093Ft
40% (19.403Ft) :	-0.227Ft	0.115Ft
30% (14.552Ft) :	-0.177Ft	0.118Ft
20% (9.703Ft) :	-0.121Ft	0.105Ft
10% (4.848Ft) :	-0.065Ft	0.069Ft
0% (0.000Ft) :	0.000Ft	0.000Ft

Before BSeam

Genoa: 8000711 Hank Headsail.des



Seam Allowances

Zone:	Split	Radial	Cross
Zone: 1	0.115Ft	0.115Ft	0.115Ft
Cover 1	0.082Ft	0.082Ft	0.082Ft
Cover 2	0.082Ft	0.082Ft	0.082Ft
Cover 3	0.000Ft	0.000Ft	0.000Ft
Cover 4	0.000Ft	0.000Ft	0.000Ft

Edge Excesses

Sail:	Luff	Leech	Foot
Sail:	0.000Ft	0.000Ft	0.000Ft
Cover 0	0.230Ft	0.328Ft	0.230Ft
Cover 1	0.230Ft	0.230Ft	0.328Ft
Cover 2	0.000Ft	0.230Ft	0.230Ft
Cover 3	0.000Ft	0.230Ft	0.230Ft

Total Seam Lengths (Ft)

Horizontal	90.86
Radial/Vertical	0.00
Bi-Radial Split	0.00

Materials

Material	Area (Ft ²)	Panels
Material 1	395.54	1,2,3,4,5 6,7,8,9,10 11