



Club
Certificate
2024

Boat
ELLI
GER 8611

Deutscher Segler Verband e.V.
Soling 16
24159 Kiel Schilksee
technik@dsv.org



APH ToD: **579.7** CDL: **8.181**
APH ToT: **1.0350** CertNo: **142637**

BOAT

Class **CORBY 29**
Designer **CORBY**
Builder **MICROSPAN**
Age date **01/2011**
Series date **01/2008**
Offset file **corby29.off**
Data file **GER8611**

HULL

Length Overall **8.820 m**
Maximum Beam **2.826 m**
Draft **2.021 m**
Displacement **3,235 kg**
DLR **6.6407**
IMS Division **Performance**
Dynamic Allowance **0.000%**
Age Allowance **0.487%**

PROPELLER

Installation **Strut**
Type **Folding 2 blades**
Diameter **0.360m**

CREW

Maximum weight **596 kg** (declared)
Minimum weight **466 kg** * when applied
Non Manual Power **No**
Crew Arm Extension

SAIL AREAS (m²)

	Measured	Rated
Mainsail	27.26	27.80
Headsail Luffed	22.52	22.52
Headsail Flying		
Symmetric	75.52	75.52
Asymmetric		

STORM SAIL AREAS (m²)

Trysail **8.06**
Storm Jib **7.57**
Heavy Weather Jib **20.43**

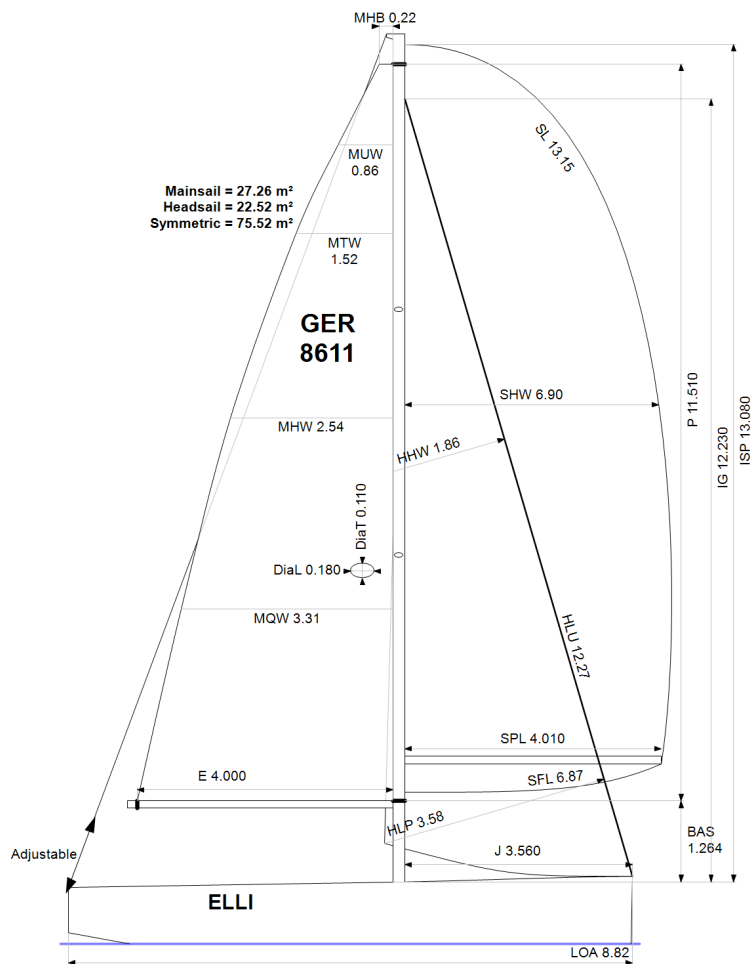
SAIL LIMITS

Headsails **5**
Spinnakers **4**


STABILITY

Righting Moment **N/A**
Stability Index **N/A**

The owner and any other person in charge is responsible that boat is complying with her certificate in accordance with RRS 78.1 and ORC Rule 304.



Rated boat velocities in knots								
Wind Velocity	6 kt	8 kt	10 kt	12 kt	14 kt	16 kt	20 kt	24 kt
Beat Angles	41.8°	40.0°	38.0°	36.9°	36.3°	36.1°	36.0°	37.2°
Beat VMG	3.44	4.16	4.63	4.86	4.97	5.04	5.09	5.03
52°	5.17	6.04	6.48	6.70	6.80	6.87	6.94	6.94
60°	5.40	6.22	6.61	6.83	6.96	7.04	7.14	7.16
75°	5.54	6.33	6.71	6.96	7.16	7.30	7.48	7.57
90°	5.50	6.38	6.77	6.98	7.23	7.45	7.80	8.04
110°	5.59	6.53	6.97	7.30	7.54	7.73	8.07	8.29
120°	5.45	6.44	6.94	7.32	7.69	8.03	8.50	8.96
135°	4.94	6.04	6.68	7.09	7.50	7.92	8.98	10.67
150°	4.19	5.27	6.17	6.72	7.10	7.47	8.34	9.79
Run VMG	3.63	4.57	5.37	6.00	6.53	6.92	7.63	8.48
Gybe Angles	144.4°	148.9°	153.6°	161.5°	176.3°	178.1°	178.1°	145.1°



Club Certificate 2024

Boat
ELLI
GER 8611

Deutscher Segler Verband e.V.
Soling 16
24159 Kiel Schilksee
technik@dsv.org



Time Allowances in secs/NM								
Wind Velocity	6 kt	8 kt	10 kt	12 kt	14 kt	16 kt	20 kt	24 kt
Beat VMG	1047.7	866.3	777.3	740.7	724.5	715.0	707.1	715.6
52°	696.8	596.1	555.3	537.5	529.2	524.1	518.7	518.6
60°	666.3	579.1	544.6	527.1	517.0	511.4	504.5	503.0
75°	650.2	569.0	536.8	517.1	503.1	493.0	481.3	475.3
90°	654.7	563.9	532.1	515.5	498.0	483.1	461.7	448.0
110°	643.7	551.4	516.2	492.8	477.1	465.6	446.2	434.5
120°	660.8	559.3	519.1	491.6	468.2	448.5	423.6	401.8
135°	728.8	596.2	539.3	507.7	480.3	454.3	400.7	337.3
150°	859.6	682.5	583.9	536.1	507.1	481.7	431.8	367.7
Run VMG	992.6	788.1	670.8	600.3	551.4	520.0	471.9	424.5
Selected Courses								
Windward / Leeward	1020.2	827.2	724.1	670.5	638.0	617.5	589.5	570.1
All purpose	792.6	658.8	595.6	562.8	542.0	526.7	503.1	483.3

Single Number Scoring Options		
Course	Time On Distance	Time On Time
Windward / Leeward	698.5	0.8590
All purpose	579.7	1.0350

Custom scoring options for Germany

Scoring Option	Time On Time
Triple Number Coastal/Long Distance Low	0.8268
Triple Number Coastal/Long Distance Medium	1.0407
Triple Number Coastal/Long Distance High	1.1502
Triple Number Windward/Leeward Low	0.6496
Triple Number Windward/Leeward Medium	0.8655
Triple Number Windward/Leeward High	0.9802

Performance Curve	6 kt	8 kt	10 kt	12 kt	14 kt	16 kt	20 kt	24 kt
Coastal/Long Distance	1017.4	781.0	661.2	597.0	560.8	531.7	485.5	466.6