

Genoa: 8000702 Jesus-2 Cheoy Lee Golden Wave 42 Headsail.des

Design Info
=====

Design File:
\\NAS\Engineering files\Queenie-Customer Order\Fareast Sails\2024 Orders\Need to be Confirmed\8000702 Jesus CH

Initial Design Date: 25/7/2024
Boat:
Cheoy Lee Golden Wave 42
Client:

Comments:

Design Data
=====

Genoa

Measurements

Luff geodesic: 17.206m
Leech geodesic: 16.434m
Foot geodesic: 7.611m
Headboard width: 0.050m
Luff perpendicular (HLP): 7.252m
Upper width (HUW): 0.782m
Three-quarter width (HTW): 1.581m
Half width (HHW): 3.372m
Quarter width (HQW): 5.290m
Foot median: 16.606m
ORC Headsail area: 59.972m?
IRC Headsail area: 59.734m?
Surface area: 60.328m?
Forestay height: 17.370m
J: 5.180m

Draft Stripes

1, Luff: 4.320m ; Leech: 3.893m ;
2, Luff: 8.639m ; Leech: 8.079m ;
3, Luff: 12.941m ; Leech: 12.218m ;

Luff Curve

17.203m, 0.000m
15.773m, 0.058m
14.192m, 0.106m
12.800m, 0.130m
11.182m, 0.139m
8.561m, 0.122m
5.591m, 0.083m
2.908m, 0.041m
0.000m, 0.000m

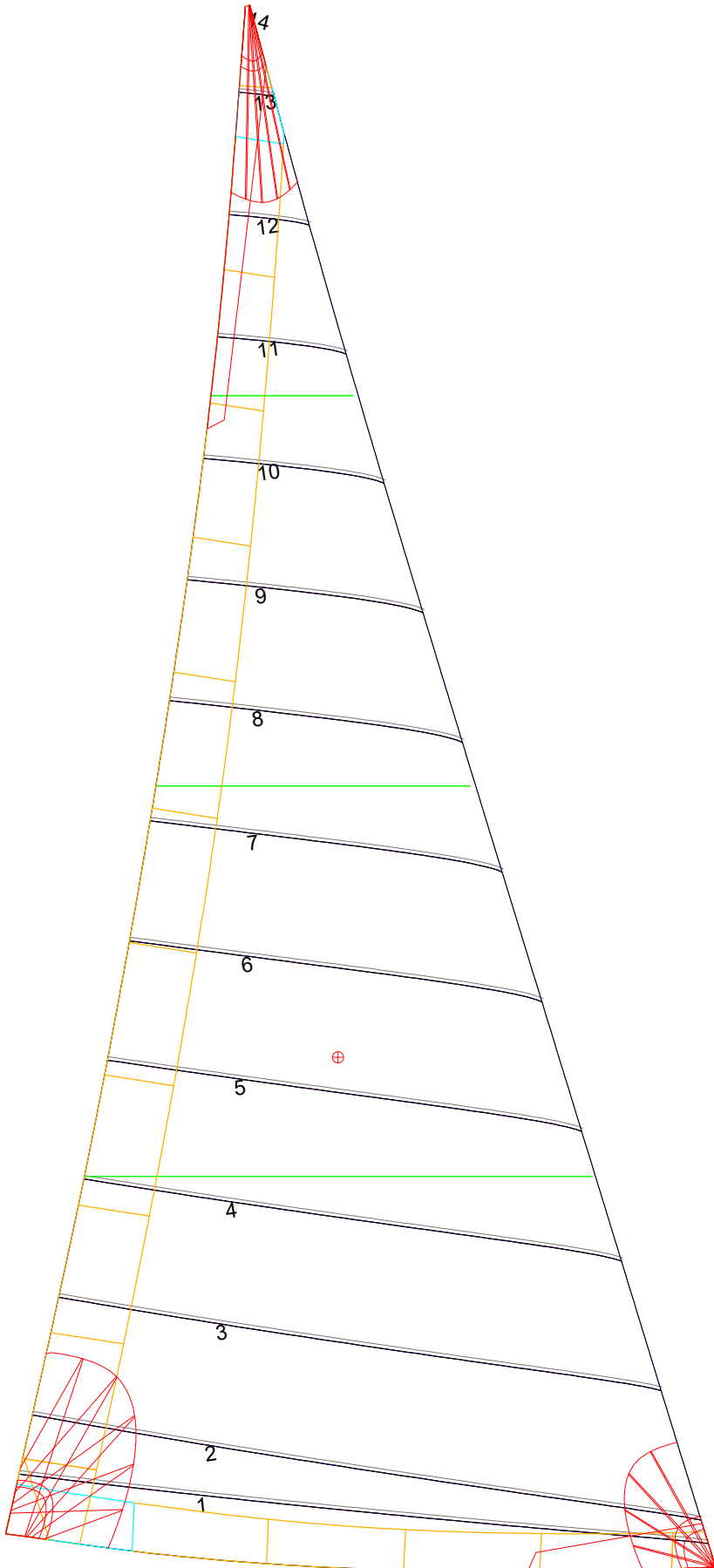
Fanned Luff (@ 5.00% [0.375m])

100% (17.203m) : -0.000m
90% (15.481m) : -0.071m
80% (13.765m) : -0.116m
70% (12.043m) : -0.137m
60% (10.323m) : -0.137m
50% (8.602m) : -0.123m
40% (6.882m) : -0.101m
30% (5.161m) : -0.077m
20% (3.441m) : -0.053m
10% (1.719m) : -0.028m
0% (0.000m) : 0.000m

Before BSeam

-0.000m
-0.029m
-0.034m
-0.018m
0.008m
0.036m
0.058m
0.067m
0.059m
0.031m
0.000m

Genoa: 8000702 Jesus-2 Cheoy Lee Golden Wave 42 Headsail.des



Seam Allowances

Zone:	Split	Radial	Cross
Zone: 1	0.038m	0.038m	0.038m
Cover 1	0.025m	0.025m	0.025m
Cover 2	0.025m	0.025m	0.025m
Cover 3	0.000m	0.000m	0.000m
Cover 4	0.000m	0.000m	0.000m

Edge Excesses

Sail:	Luff	Leech	Foot
Sail:	0.000m	0.000m	0.000m
Cover 0	0.070m	0.100m	0.070m
Cover 1	0.070m	0.070m	0.100m
Cover 2	0.000m	0.070m	0.070m
Cover 3	0.000m	0.070m	0.070m

Total Seam Lengths (m)

Horizontal	51.87
Radial/Vertical	0.00
Bi-Radial Split	0.00

Materials

Material	Area (m ²)	Panels
Material 1	60.42	1,2,3,4,5 6,7,8,9,10 11,12,13,14