

# Mainsail: 8000621 Antti-1 fullbattmain.des

Design Info  
=====

Design File:  
\\NAS\Engineering files\Queenie-Customer Order\Fareast Sails\2024 Orders\Need to be Confirmed\8000621 Antti mai

Initial Design Date: 3/7/2024  
Boat:

Comments:

Client:

Design Data  
=====

## Main

### Measurements

Luff geodesic:	12.375m
Leech geodesic:	12.800m
Foot geodesic:	3.940m
Head geodesic:	0.115m
Upper width (MUW):	0.750m
Three-quarter width (MTW):	1.364m
Half width (MHW):	2.398m
Quarter width (MQW):	3.244m
Foot median:	12.557m
ORC Mainsail area:	27.960m?
Surface area:	28.504m?
Clew height:	0.229m
Mast rake:	0.000m

### Battens

Position	Length	Roach	Angle	Luff	Leech	Full
80.000%	1.174m	0.209m	75.932?	9.891m	10.210m	Full
60.000%	2.054m	0.272m	75.932?	7.416m	7.657m	Full
40.000%	2.783m	0.226m	75.932?	4.943m	5.105m	Full
20.000%	3.405m	0.126m	75.932?	2.471m	2.552m	Full

### Reefing Points

1, Luff: 1.508m ; Leech: 1.546m ; Offset: 0.000m ; Number Eyelets: 3  
2, Luff: 3.153m ; Leech: 3.227m ; Offset: 0.000m ; Number Eyelets: 3

### Draft Stripes

1, Luff: 4.081m ; Leech: 4.001m ;  
2, Luff: 8.164m ; Leech: 8.261m ;

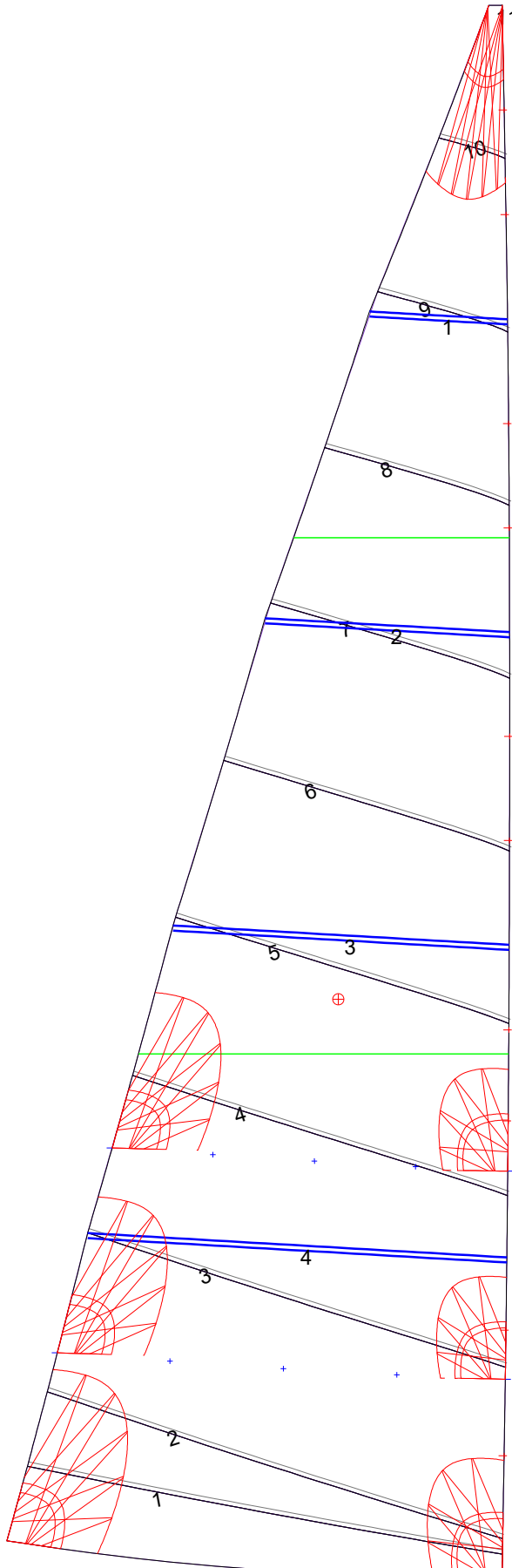
### Luff Slides

1, Position: 0.904m  
2, Position: 1.896m  
3, Position: 3.551m  
4, Position: 4.271m  
5, Position: 5.768m  
6, Position: 6.592m  
7, Position: 8.241m  
8, Position: 9.066m  
9, Position: 10.719m  
10, Position: 11.547m

### Luff Curve

		Fanned Luff (@ 5.00% [0.196m])	Before BSeam
12.375m,	0.000m	100% (12.375m) :	0.000m
10.833m,	-0.029m	90% (11.138m) :	0.046m
9.281m,	-0.049m	80% (9.900m) :	0.085m
7.726m,	-0.058m	70% (8.663m) :	0.112m
6.187m,	-0.059m	60% (7.425m) :	0.127m
4.611m,	-0.054m	50% (6.188m) :	0.130m
3.094m,	-0.043m	40% (4.950m) :	0.125m
1.542m,	-0.025m	30% (3.713m) :	0.109m
0.000m,	0.000m	20% (2.475m) :	0.080m
		10% (1.238m) :	0.041m
		0% (0.000m) :	0.000m

# Mainsail: 8000621 Antti-1 fullbattmain.des



Seam Allowances			
Zone: 1	Split	Radial	Cross
	0.035m	0.035m	0.035m

Edge Excesses			
Sail:	Luff	Leech	Foot
	0.000m	0.000m	0.000m

### Total Seam Lengths (m)

Horizontal	25.22
Radial/Vertical	0.00
Bi-Radial Split	0.00

### Materials

Material	Area (m <sup>2</sup> )	Panels
Material 1	28.52	1,2,3,4,5 6,7,8,9,10 11