

# Mainsail: 8000617 Lars stdmain.des

Design Info  
=====

Design File:  
\\NAS\Engineering files\Queenie-Customer Order\Fareast Sails\2024 Orders\Need to be Confirmed\8000617 Lars mai

Initial Design Date: 28/6/2024  
Boat:

Comments:

Client:

Design Data  
=====

## Main

### Measurements

Luff geodesic:	7.187m
Leech geodesic:	7.793m
Foot geodesic:	3.138m
Head geodesic:	0.115m
Upper width (MUW):	0.593m
Three-quarter width (MTW):	1.083m
Half width (MHW):	1.918m
Quarter width (MQW):	2.589m
Foot median:	7.368m
ORC Mainsail area:	12.959m?
Surface area:	13.309m?
Clew height:	0.100m
Mast rake:	0.000m

### Battens

Position	Length	Roach	Angle	Luff	Leech	Full
80.000%	0.957m	0.171m	68.746?	5.742m	6.210m	Full
60.000%	0.800m	0.236m	68.746?	4.302m	4.658m	
40.000%	0.800m	0.202m	68.746?	2.863m	3.105m	
20.000%	0.700m	0.113m	68.746?	1.424m	1.553m	

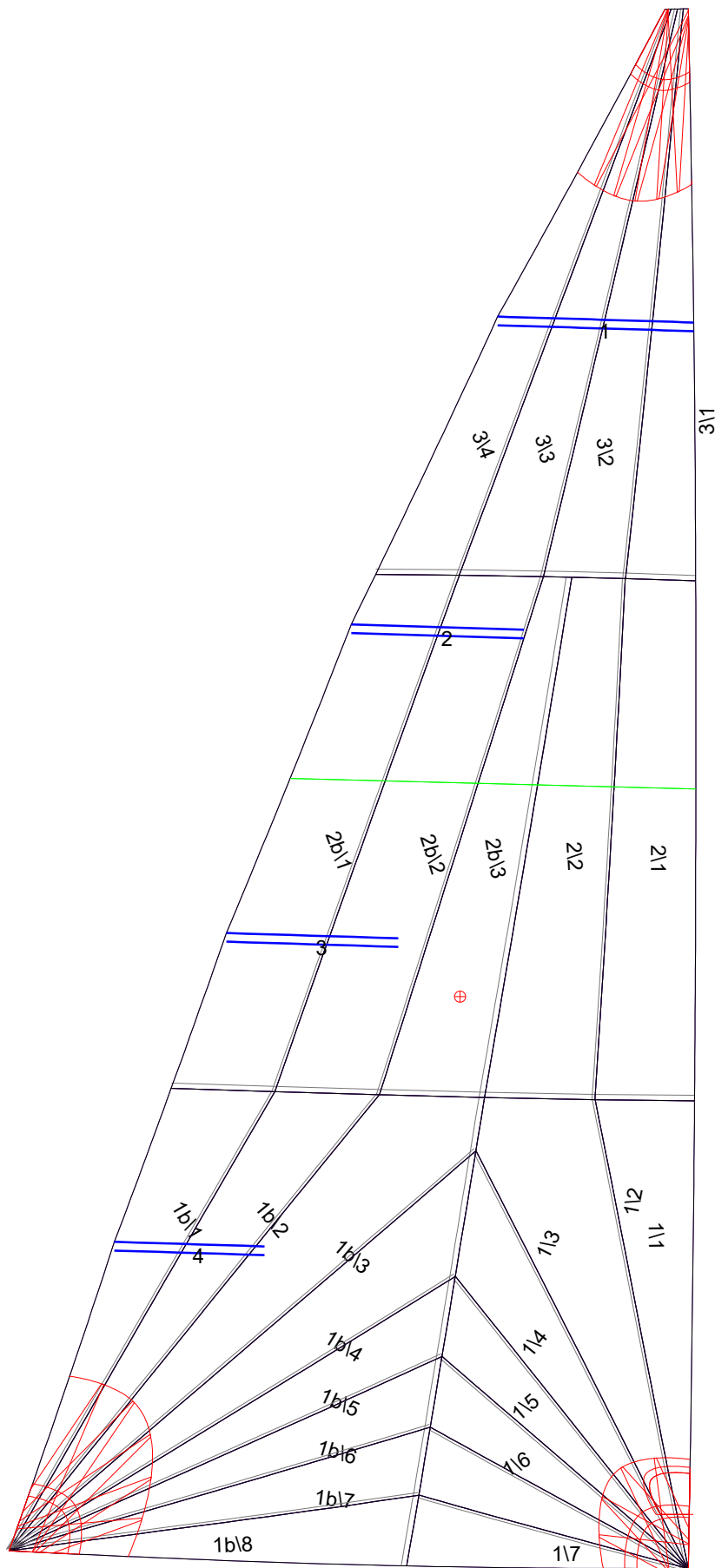
### Draft Stripes

1, Luff: 3.593m ; Leech: 3.795m ;

### Luff Curve

		Fanned Luff (@ 5.00% [0.156m])	Before BSeam
7.187m,	0.000m	100% (7.187m) :	-0.000m
6.291m,	-0.017m	90% (6.468m) :	0.031m
5.390m,	-0.029m	80% (5.750m) :	0.058m
4.487m,	-0.034m	70% (5.031m) :	0.076m
3.593m,	-0.035m	60% (4.312m) :	0.087m
2.678m,	-0.032m	50% (3.594m) :	0.090m
1.797m,	-0.026m	40% (2.875m) :	0.087m
0.896m,	-0.014m	30% (2.156m) :	0.075m
0.000m,	0.000m	20% (1.437m) :	0.055m
		10% (0.719m) :	0.030m
		0% (0.000m) :	0.000m

# Mainsail: 8000617 Lars stdmain.des



## Seam Allowances

	Split	Radial	Cross
Zone: 1/a	0.025m	0.013m	0.025m
Zone: 1/b	0.025m	0.013m	0.025m
Zone: 2/a	0.025m	0.013m	0.025m
Zone: 2/b	0.025m	0.013m	0.025m
Zone: 3	0.025m	0.013m	0.025m

## Edge Excesses

	Luff	Leech	Foot
Sail:	0.000m	0.000m	0.000m

## Total Seam Lengths (m)

Horizontal	4.04
Radial/Vertical	42.69
Bi-Radial Split	4.77

## Materials

Material	Area (m <sup>2</sup> )	Panels
Material 1	13.31	1\1,1\2,1\3,1\4,1\5 1\6,1\7,1b\1,1b\2,1b\3 1b\4,1b\5,1b\6,1b\7,1b\8 2\1,2\2,2b\3,2b\2,2b\1 3\1,3\2,3\3,3\4