

# Spinnaker: 8000610 Jordi Decision 7.5 sym spi V1.des

Design Info  
=====

Design File:  
\\NAS\Engineering files\Queenie-Customer Order\Fareast Sails\2024 Orders\Need to be Confirmed\8000610 Jordi Dec

Initial Design Date: 15/6/2024  
Boat:  
Decision 7.5  
Client:

Comments:

Design Data  
=====

## Spinnaker

### Measurements

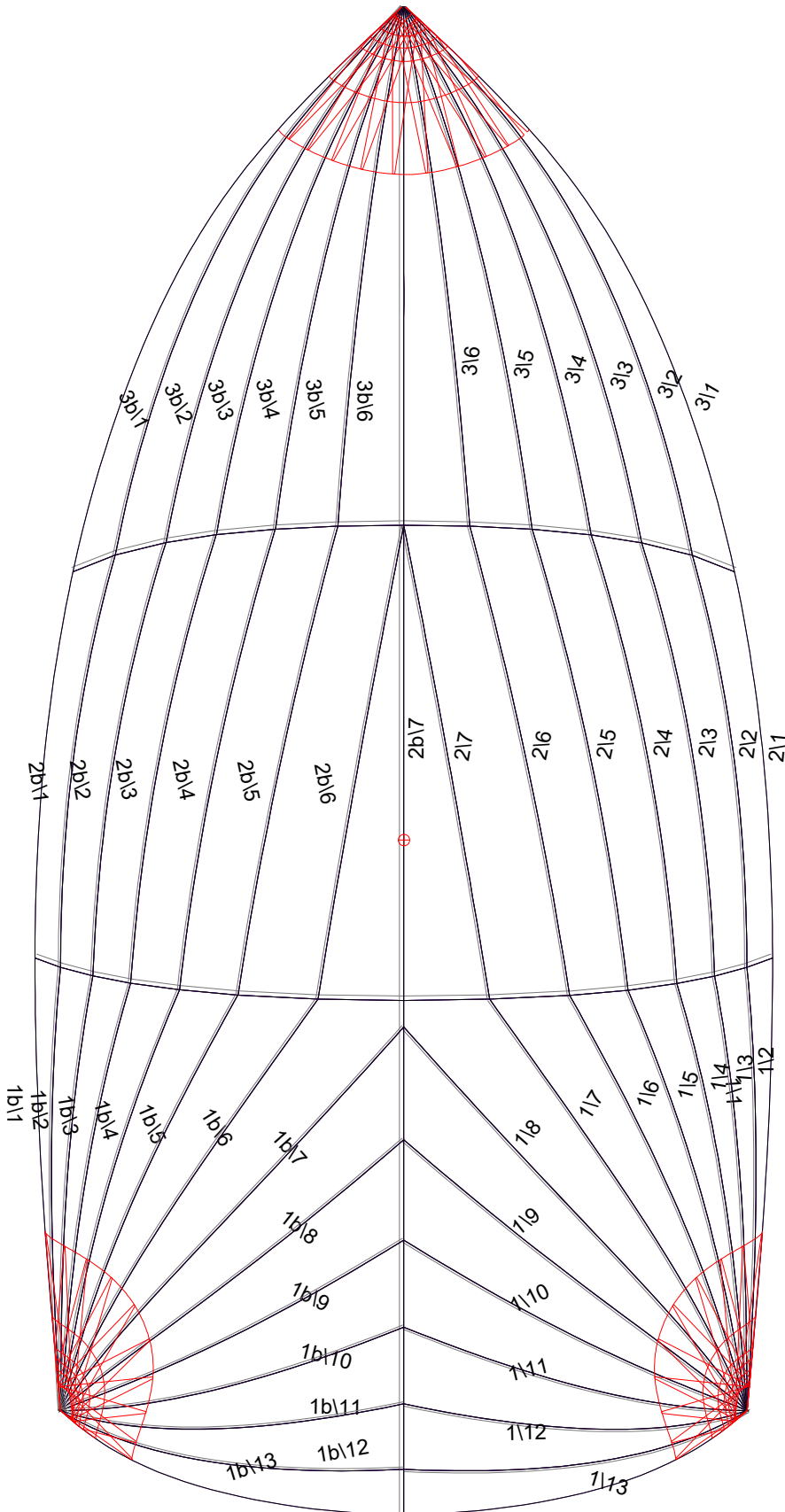
Leech length (SLE): 8.920m  
 Foot length (SFL): 4.500m  
 Headboard Width: 0.020m  
 Maximum width (31.9%): 5.160m  
 Three-quarter width: 3.009m  
 Half width (SHW): 4.819m  
 Quarter width: 5.127m  
 Foot median: 9.565m  
 ORC Spinnaker Area: 35.347m?  
 IRC Spinnaker Area: 35.206m?  
 Surface Area: 37.460m?  
 Hoist height: 9.000m  
 Pole Length: 2.500m

### Luff Curve

5.744m, 0.000m  
 4.308m, 0.000m  
 2.872m, 0.000m  
 1.436m, 0.000m  
 0.000m, 0.000m

Fanned Luff (@ 5.00% [0.197m])		Before BSeam
100% (7.511m) :	0.000m	-0.000m
86% (6.496m) :	-0.818m	0.622m
71% (5.349m) :	-1.229m	1.008m
56% (4.218m) :	-1.240m	1.225m
43% (3.259m) :	-0.706m	1.319m
49% (3.676m) :	0.005m	1.302m
42% (3.133m) :	0.738m	1.181m
30% (2.288m) :	0.735m	0.971m
21% (1.562m) :	0.471m	0.694m
11% (0.806m) :	0.227m	0.364m
0% (0.000m) :	0.000m	0.000m

# Spinnaker: 8000610 Jordi Decision 7.5 sym spi V1.des



## Seam Allowances

Zone:	Split	Radial	Cross
Zone: 1/a	0.025m	0.013m	0.025m
Zone: 1/b	0.025m	0.013m	0.025m
Zone: 2/a	0.025m	0.013m	0.025m
Zone: 2/b	0.025m	0.013m	0.025m
Zone: 3/a	0.025m	0.013m	0.025m
Zone: 3/b	0.025m	0.013m	0.025m

## Edge Excesses

Sail:	Luff	Leech	Foot
Sail:	0.000m	0.000m	0.000m

## Total Seam Lengths (m)

Horizontal	9.72
Radial/Vertical	138.85
Bi-Radial Split	9.68

## Materials

Material	Area (m <sup>2</sup> )	Panels
Material 1	37.45	1\1, 1\2, 1\3, 1\4, 1\5 1\6, 1\7, 1\8, 1\9, 1\10 1\11, 1\12, 1\13, 1b\1, 1b\2 1b\3, 1b\4, 1b\5, 1b\6, 1b\7 1b\8, 1b\9, 1b\10, 1b\11, 1b\12 1b\13, 2\1, 2\2, 2\3, 2\4 2\5, 2\6, 2\7, 2b\7, 2b\6 2b\5, 2b\4, 2b\3, 2b\2, 2b\1 3\1, 3\2, 3\3, 3\4, 3\5 3\6, 3b\6, 3b\5, 3b\4, 3b\3 3b\2, 3b\1