

Spinnaker: 8000532 Jurgen Leopard 39 sym spin(1).des

Design Info
=====

Design File:
\\NAS\Engineering files\Queenie-Customer Order\Fareast Sails\2024 Orders\Need to be Confirmed\8000532 Jurgen L

Initial Design Date: 31/5/2024
Boat:
Leopard 39
Client:

Comments:

Design Data
=====

Spinnaker

Measurements

Leech length (SLE): 14.600m
Foot length (SFL): 7.235m
Headboard Width: 0.010m
Maximum width (34.1%): 8.774m
Three-quarter width: 5.335m
Half width (SHW): 8.371m
Quarter width: 8.681m
Foot median: 16.290m
ORC Spinnaker Area: 99.081m?
IRC Spinnaker Area: 98.685m?
Surface Area: 107.782m?
Hoist height: 19.850m
Pole Length: 5.750m

Luff Curve

11.959m, 0.000m
8.969m, 0.000m
5.979m, 0.000m
2.990m, 0.000m
0.000m, 0.000m

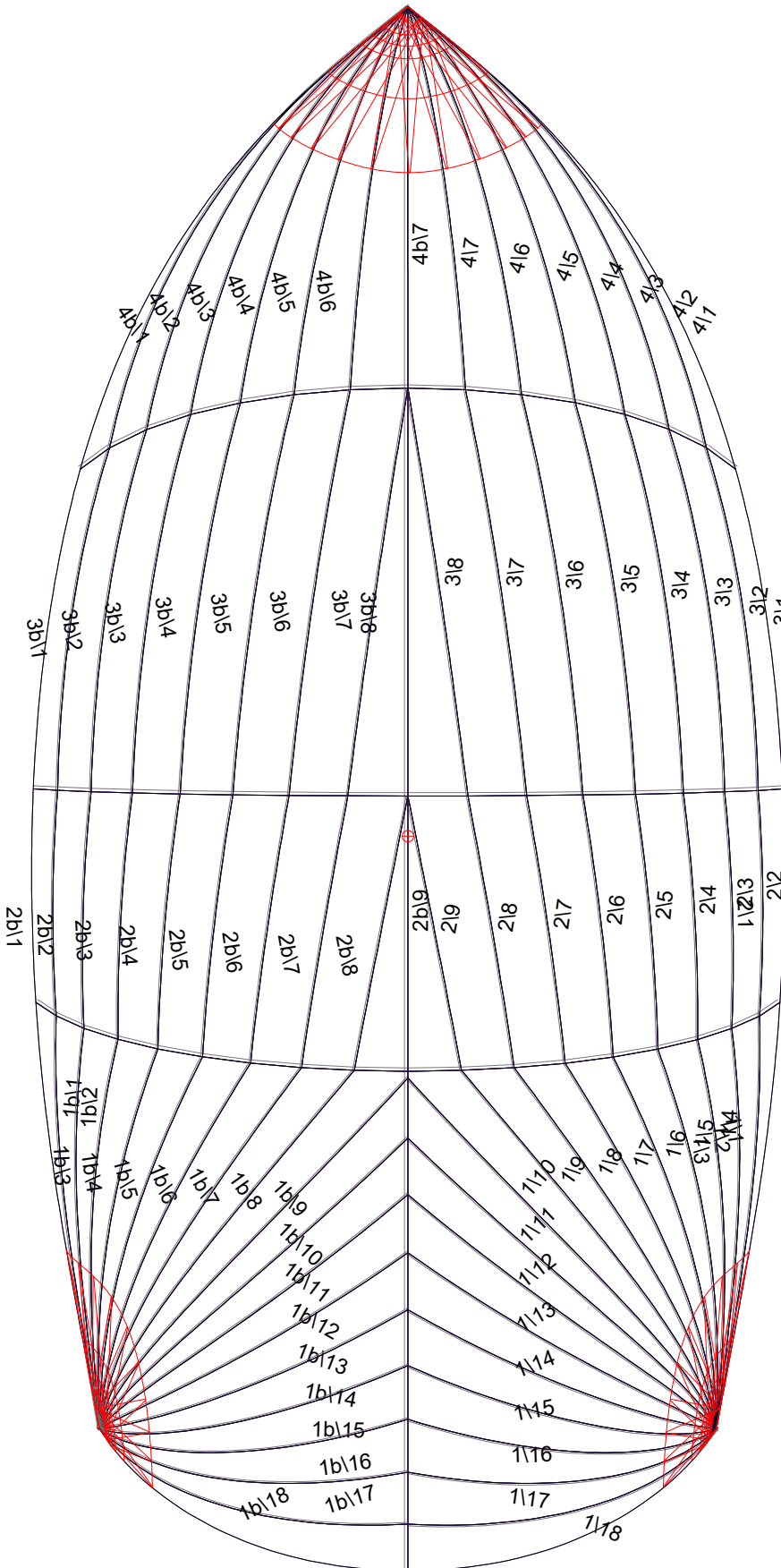
Fanned Luff (@ 5.00% [0.279m])

100% (7.895m) : 0.000m
78% (6.121m) : -1.611m
101% (7.988m) : -0.782m
123% (9.702m) : -0.340m
100% (7.913m) : -0.243m
80% (6.296m) : -1.082m
60% (4.771m) : -0.555m
49% (3.876m) : 0.539m
33% (2.581m) : 0.513m
17% (1.343m) : 0.244m
0% (0.000m) : 0.000m

Before BSeam

-0.000m
1.419m
2.180m
2.536m
2.633m
2.528m
2.271m
1.876m
1.344m
0.705m
0.000m

Spinnaker: 8000532 Jurgen Leopard 39 sym spin(1).des



Seam Allowances

Zone:	Split	Radial	Cross
Zone: 1/a	0.030m	0.015m	0.030m
Zone: 1/b	0.030m	0.015m	0.030m
Zone: 2/a	0.030m	0.015m	0.030m
Zone: 2/b	0.030m	0.015m	0.030m
Zone: 3/a	0.030m	0.015m	0.030m
Zone: 3/b	0.030m	0.015m	0.030m
Zone: 4/a	0.030m	0.015m	0.030m
Zone: 4/b	0.030m	0.015m	0.030m

Edge Excesses

Sail:	Luff	Leech	Foot
	0.000m	0.000m	0.000m

Total Seam Lengths (m)

Horizontal	24.81
Radial/Vertical	308.44
Bi-Radial Split	16.48

Materials

Material	Area (m ²)	Panels
Material 1	107.71	1\1,1\2,1\3,1\4,1\5 1\6,1\7,1\8,1\9,1\10 1\11,1\12,1\13,1\14,1\15 1\16,1\17,1\18,1b\1,1b\2 1b\3,1b\4,1b\5,1b\6,1b\7 1b\8,1b\9,1b\10,1b\11,1b\12 1b\13,1b\14,1b\15,1b\16,1b\17 1b\18,2\1,2\2,2\3,2\4 2\5,2\6,2\7,2\8,2\9 2b\9,2b\8,2b\7,2b\6,2b\5 2b\4,2b\3,2b\2,2b\1,3\1 3\2,3\3,3\4,3\5,3\6 3\7,3\8,3b\8,3b\7,3b\6 3b\5,3b\4,3b\3,3b\2,3b\1 4\1,4\2,4\3,4\4,4\5 4\6,4\7,4b\7,4b\6,4b\5 4b\4,4b\3,4b\2,4b\1