

# Genoa: 8000528 Binne-2 Etap 22i Headsail tri-radialV1.des

## Design Info

=====

## Design File:

\\NAS\Engineering files\Queenie-Customer Order\Fareast Sails\2024 Orders\Need to be Confirmed\8000528 Binne Etap

Initial Design Date: 4/6/2024

Boat:

Etap 22i

Client:

Comments:

## Design Data

=====

### Genoa

#### Measurements

Luff geodesic:	6.435m
Leech geodesic:	6.035m
Foot geodesic:	3.173m
Headboard width:	0.050m
Luff perpendicular (HLP):	2.970m
Upper width (HUW):	0.351m
Three-quarter width (HTW):	0.677m
Half width (HHW):	1.413m
Quarter width (HQW):	2.182m
Foot median:	6.128m
ORC Headsail area:	9.320m <sup>2</sup>
IRC Headsail area:	9.288m <sup>2</sup>
Surface area:	9.412m <sup>2</sup>
Forestay height:	6.650m
J:	2.200m

#### Draft Stripes

1, Luff: 2.134m ; Leech: 1.865m ;  
2, Luff: 4.263m ; Leech: 3.907m ;

#### Luff Slides

1, Position: 0.516m  
2, Position: 1.303m  
3, Position: 2.089m  
4, Position: 2.876m  
5, Position: 3.662m  
6, Position: 4.449m  
7, Position: 5.236m  
8, Position: 6.022m

#### Luff Curve

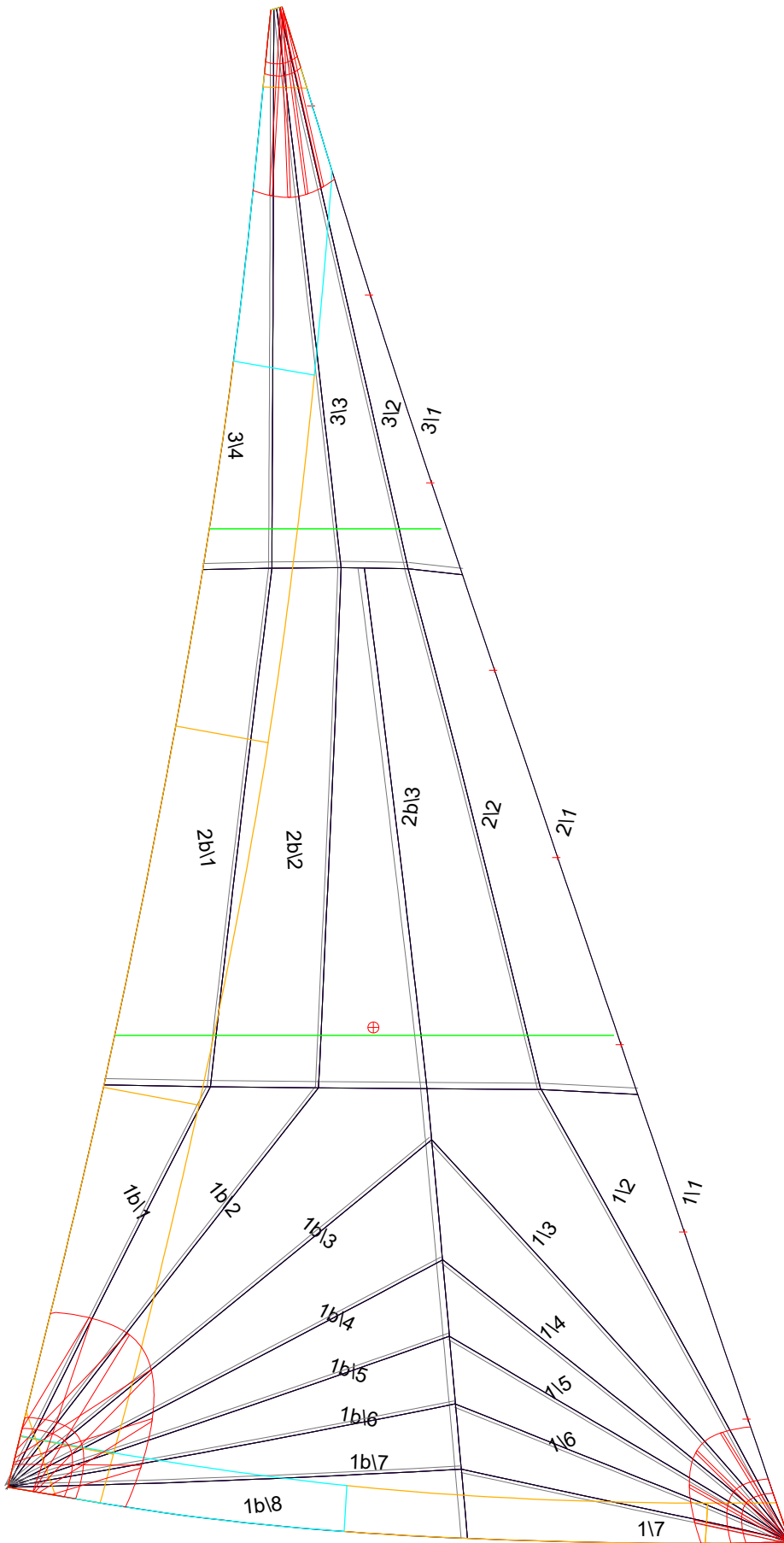
6.434m,	0.000m
5.899m,	0.021m
5.308m,	0.039m
4.787m,	0.048m
4.182m,	0.051m
3.202m,	0.045m
2.091m,	0.030m
1.087m,	0.015m
0.000m,	0.000m

#### Fanned Luff (@ 5.00% [0.156m])

100% (6.434m) :	0.000m	0.000m
90% (5.790m) :	-0.024m	-0.007m
80% (5.148m) :	-0.044m	-0.011m
70% (4.504m) :	-0.052m	-0.002m
60% (3.861m) :	-0.051m	0.012m
50% (3.217m) :	-0.046m	0.023m
40% (2.574m) :	-0.039m	0.028m
30% (1.930m) :	-0.030m	0.028m
20% (1.287m) :	-0.020m	0.023m
10% (0.643m) :	-0.010m	0.012m
0% (0.000m) :	0.000m	0.000m

#### Before BSeam

# Genoa: 8000528 Binne-2 Etap 22i Headsail tri-radialV1.des



## Seam Allowances

	Split	Radial	Cross
Zone: 1/a	0.025m	0.013m	0.025m
Zone: 1/b	0.025m	0.013m	0.025m
Zone: 2/a	0.025m	0.013m	0.025m
Zone: 2/b	0.025m	0.013m	0.025m
Zone: 3	0.025m	0.013m	0.025m
Cover 1	0.025m	0.025m	0.025m
Cover 2	0.025m	0.025m	0.025m
Cover 3	0.000m	0.000m	0.000m
Cover 4	0.000m	0.000m	0.000m

## Edge Excesses

	Luff	Leech	Foot
Sail:	0.000m	0.000m	0.000m
Cover 0	0.070m	0.100m	0.070m
Cover 1	0.070m	0.070m	0.100m
Cover 2	0.000m	0.070m	0.070m
Cover 3	0.000m	0.070m	0.070m

## Total Seam Lengths (m)

Horizontal	3.32
Radial/Vertical	37.39
Bi-Radial Split	4.03

## Materials

Material	Area (m <sup>2</sup> )	Panels
Material 1	9.43	1\1,1\2,1\3,1\4,1\5 1\6,1\7,1b\1,1b\2,1b\3 1b\4,1b\5,1b\6,1b\7,1b\8 2\1,2\2,2b\3,2b\2,2b\1 3\1,3\2,3\3,3\4