

Mainsail: 8000528 Binne-1 Etap 22i Mainsail tri-radial.des

Design Info
=====

Design File:
\\NAS\Engineering files\Queenie-Customer Order\Fareast Sails\2024 Orders\Need to be Confirmed\8000528 Binne Etap

Initial Design Date: 30/5/2024
Boat:
Etap 22i
Client:

Comments:

Design Data
=====

Main

Measurements

Luff geodesic: 7.375m
Leech geodesic: 7.765m
Foot geodesic: 2.574m
Head geodesic: 0.115m
Upper width (MUW): 0.514m
Three-quarter width (MTW): 0.918m
Half width (MHW): 1.606m
Quarter width (MQW): 2.132m
Foot median: 7.486m
ORC Mainsail area: 11.058m?
Surface area: 11.269m?
Clew height: 0.063m
Mast rake: 0.000m

Battens

Position	Length	Roach	Angle	Luff	Leech	Full
80.000%	0.801m	0.143m	72.992?	5.896m	6.193m	Full
60.000%	1.396m	0.214m	72.992?	4.422m	4.645m	Full
40.000%	1.858m	0.186m	72.992?	2.948m	3.097m	Full
20.000%	2.236m	0.106m	72.992?	1.474m	1.548m	Full

Reefing Points

1, Luff: 1.069m ; Leech: 1.078m ; Offset: 0.000m ; Number Eyelets: 2
2, Luff: 1.924m ; Leech: 1.951m ; Offset: 0.000m ; Number Eyelets: 2

Draft Stripes

1, Luff: 2.433m ; Leech: 2.456m ;
2, Luff: 4.867m ; Leech: 5.010m ;

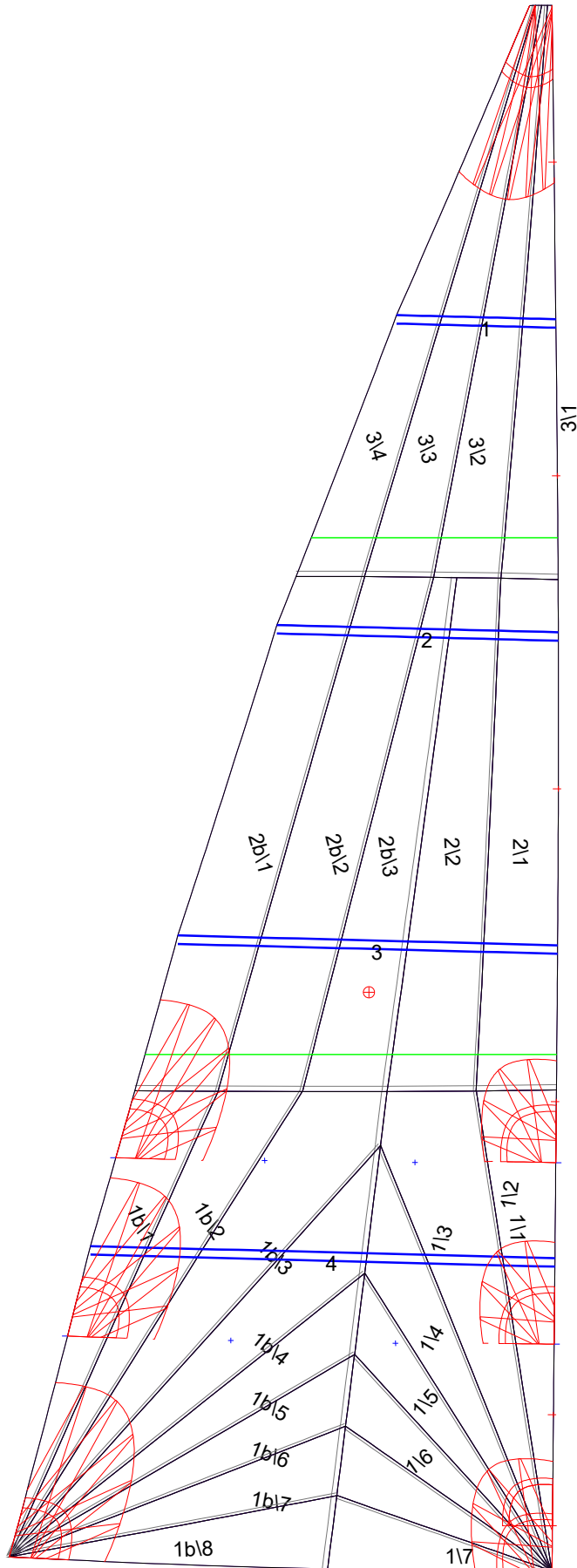
Luff Slides

1, Position: 0.737m
2, Position: 2.211m
3, Position: 3.685m
4, Position: 5.159m
5, Position: 6.636m

Luff Curve

		Fanned Luff (@ 5.00% [0.128m])	Before BSeam
7.375m,	0.000m	100% (7.375m) :	0.000m
5.826m,	-0.019m	90% (6.638m) :	0.025m
4.277m,	-0.031m	80% (5.900m) :	0.047m
2.139m,	-0.020m	70% (5.163m) :	0.063m
0.000m,	0.000m	60% (4.425m) :	0.072m
		50% (3.688m) :	0.072m
		40% (2.950m) :	0.066m
		30% (2.213m) :	0.053m
		20% (1.475m) :	0.036m
		10% (0.738m) :	0.017m
		0% (0.000m) :	0.000m

Mainsail: 8000528 Binne-1 Etap 22i Mainsail tri-radial.des



Seam Allowances

Zone:	Split	Radial	Cross
Zone: 1/a	0.025m	0.013m	0.025m
Zone: 1/b	0.025m	0.013m	0.025m
Zone: 2/a	0.025m	0.013m	0.025m
Zone: 2/b	0.025m	0.013m	0.025m
Zone: 3	0.025m	0.013m	0.025m

Edge Excesses

Sail:	Luff	Leech	Foot
	0.000m	0.000m	0.000m

Total Seam Lengths (m)

Horizontal	3.35
Radial/Vertical	40.69
Bi-Radial Split	4.86

Materials

Material	Area (m ²)	Panels
Material 1	11.29	1/1,1/2,1/3,1/4,1/5 1/6,1/7,1b/1,1b/2,1b/3 1b/4,1b/5,1b/6,1b/7,1b/8 2/1,2/2,2b/3,2b/2,2b/1 3/1,3/2,3/3,3/4