

# Genoa: 8000435 Daniel-2 BENETEAU OC 37 furlgenV1.des

Design Info  
=====

Design File:  
\\NAS\Engineering files\Queenie-Customer Order\Fareast Sails\2024 Orders\Need to be Confirmed\8000435 Daniel B

Initial Design Date: 22/5/2024  
Boat:  
BENETEAU OCEANIS 37  
Client:

Comments:

Design Data  
=====

## Genoa

### Measurements

Luff geodesic:	13.761m
Leech geodesic:	12.620m
Foot geodesic:	5.100m
Headboard width:	0.035m
Luff perpendicular (HLP):	4.703m
Upper width (HUW):	0.517m
Three-quarter width (HTW):	1.024m
Half width (HHW):	2.142m
Quarter width (HQW):	3.384m
Foot median:	13.089m
ORC Headsail area:	30.836m?
IRC Headsail area:	30.763m?
Surface area:	30.949m?
Forestay height:	13.970m
J:	4.570m

### Draft Stripes

1, Luff: 4.557m ; Leech: 3.828m ;  
2, Luff: 9.109m ; Leech: 8.143m ;

### Luff Curve

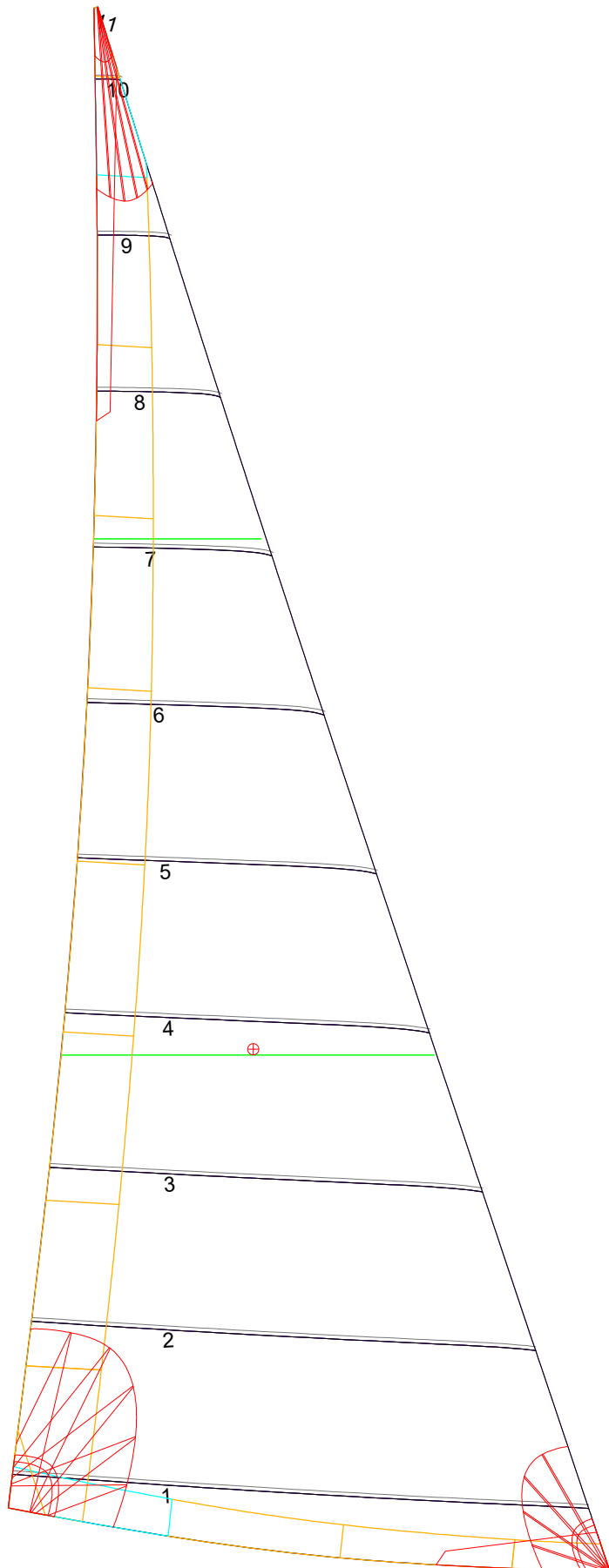
13.759m,	0.000m
12.616m,	0.035m
11.352m,	0.063m
10.238m,	0.077m
8.944m,	0.083m
6.847m,	0.072m
4.472m,	0.049m
2.326m,	0.025m
0.000m,	0.000m

### Fanned Luff (@ 5.00% [0.251m])

100% (13.760m) :	-0.000m	0.000m
90% (12.383m) :	-0.036m	-0.003m
80% (11.009m) :	-0.063m	-0.001m
70% (9.632m) :	-0.078m	0.007m
60% (8.256m) :	-0.081m	0.018m
50% (6.880m) :	-0.075m	0.029m
40% (5.504m) :	-0.064m	0.036m
30% (4.128m) :	-0.051m	0.036m
20% (2.752m) :	-0.035m	0.032m
10% (1.375m) :	-0.018m	0.021m
0% (0.000m) :	0.000m	0.000m

### Before BSeam

# Genoa: 8000435 Daniel-2 BENETEAU OC 37 furlgenV1.des



## Seam Allowances

Zone:	Split	Radial	Cross
Zone: 1	0.000m	0.000m	0.032m
Cover 1	0.025m	0.025m	0.025m
Cover 2	0.025m	0.025m	0.025m
Cover 3	0.000m	0.000m	0.000m
Cover 4	0.000m	0.000m	0.000m

## Edge Excesses

Sail:	Luff	Leech	Foot
Sail:	0.000m	0.000m	0.000m
Cover 0	0.070m	0.100m	0.070m
Cover 1	0.070m	0.070m	0.100m
Cover 2	0.000m	0.070m	0.070m
Cover 3	0.000m	0.070m	0.070m

## Total Seam Lengths (m)

Horizontal	24.42
Radial/Vertical	0.00
Bi-Radial Split	0.00

## Materials

Material	Area (m <sup>2</sup> )	Panels
Material 1	31.03	1,2,3,4,5 6,7,8,9,10 11