

Mainsail: 7001220 Alwyn Beneteau393 fullbattmainV1.des

Design Info
=====

Design File:
\\NAS\Engineering files\Queenie-Customer Order\Fareast Sails\2024 Orders\Need to be Confirmed\7001220 Alwyn Be

Initial Design Date: 12/7/2024
Boat:
Beneteau393
Client:

Comments:

Design Data
=====

Main

Measurements

Luff geodesic: 11.720m
Leech geodesic: 12.350m
Foot geodesic: 4.415m
Head geodesic: 0.073m
Upper width (MUW): 0.835m
Three-quarter width (MTW): 1.549m
Half width (MHW): 2.732m
Quarter width (MQW): 3.669m
Foot median: 11.974m
ORC Mainsail area: 29.902m?
Surface area: 30.770m?
Clew height: 0.234m
Mast rake: 0.000m

Battens

Position	Length	Roach	Angle	Luff	Leech	Full
82.000%	1.247m	0.300m	69.375?	9.651m	10.084m	Full
62.000%	2.274m	0.394m	69.375?	7.354m	7.624m	Full
42.000%	3.112m	0.347m	69.375?	5.057m	5.165m	Full
22.000%	3.790m	0.201m	69.375?	2.760m	2.705m	Full

Reefing Points

1, Luff: 1.546m ; Leech: 1.599m ; Offset: 0.000m ; Number Eyelets: 3
2, Luff: 3.221m ; Leech: 3.328m ; Offset: 0.000m ; Number Eyelets: 3
3, Luff: 5.271m ; Leech: 5.449m ; Offset: 0.000m ; Number Eyelets: 2

Draft Stripes

1, Luff: 2.928m ; Leech: 2.825m ;
2, Luff: 5.857m ; Leech: 5.911m ;
3, Luff: 8.787m ; Leech: 9.044m ;

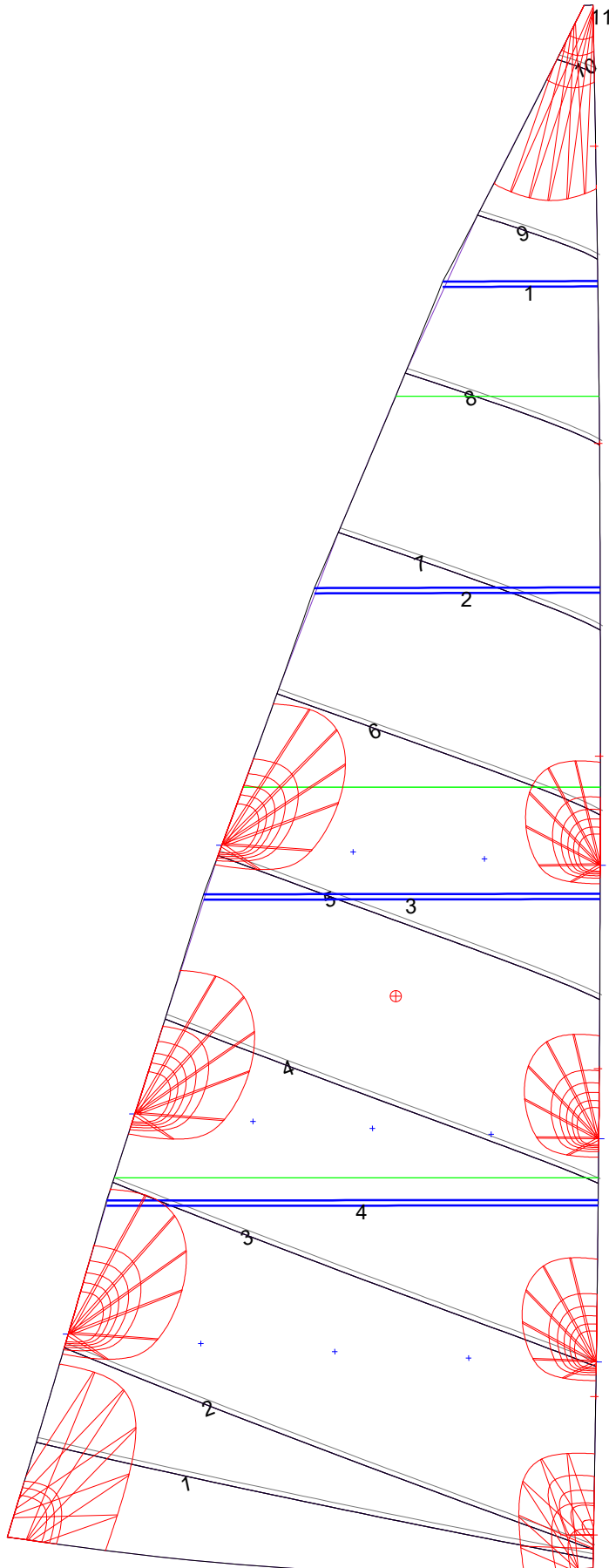
Luff Slides

1, Position: 1.286m
2, Position: 3.745m
3, Position: 6.089m
4, Position: 8.433m
5, Position: 10.663m

Luff Curve

		Fanned Luff (@ 5.00% [0.220m])	Before BSeam
11.720m,	0.000m	100% (11.720m) :	0.000m
10.259m,	-0.027m	90% (10.548m) :	0.049m
8.790m,	-0.046m	80% (9.376m) :	0.091m
7.317m,	-0.055m	70% (8.204m) :	0.119m
5.860m,	-0.056m	60% (7.032m) :	0.135m
4.367m,	-0.052m	50% (5.860m) :	0.139m
2.930m,	-0.041m	40% (4.688m) :	0.133m
1.460m,	-0.023m	30% (3.516m) :	0.115m
0.000m,	0.000m	20% (2.344m) :	0.084m
		10% (1.172m) :	0.042m
		0% (0.000m) :	0.000m

Mainsail: 7001220 Alwyn Beneteau393 fullbattmainV1.des



Seam Allowances			
Zone: 1	Split	Radial	Cross
	0.000m	0.000m	0.038m

Edge Excesses			
Sail:	Luff	Leech	Foot
	0.000m	0.000m	0.000m

Total Seam Lengths (m)

Horizontal	27.22
Radial/Vertical	0.00
Bi-Radial Split	0.00

Materials

Material	Area (m ²)	Panels
Material 1	30.75	1,2,3,4,5 6,7,8,9,10 11