

Mainsail: 7000220 Negley mainV1.des

Design Info
=====

Design File:
\\Nas\工程部-专用文件\Queenie-跟进客户\Fareast Sails\2023 Order\Need Confrim Order\7000220 Negley\7000220 Ne

Initial Design Date: 28/2/2023
Boat:

Comments:

Client:

Design Data
=====

Main

Measurements

Luff geodesic: 14.150m
Leech geodesic: 14.897m
Foot geodesic: 5.040m
Head geodesic: 0.115m
Upper width (MUW): 0.900m
Three-quarter width (MTW): 1.676m
Half width (MHW): 3.026m
Quarter width (MQW): 4.113m
Foot median: 14.496m
ORC Mainsail area: 40.307m?
Surface area: 41.239m?
Clew height: 0.100m
Mast rake: 0.000m

Battens

Position	Length	Roach	Angle	Luff	Leech	Full
80.000%	1.429m	0.230m	72.148?	11.316m	11.880m	Full
60.000%	2.572m	0.306m	72.148?	8.488m	8.910m	Full
40.000%	3.525m	0.270m	72.148?	5.660m	5.940m	Full
20.000%	4.321m	0.154m	72.148?	2.832m	2.970m	Full

Reefing Points

1, Luff: 2.122m ; Leech: 2.209m ; Offset: 0.000m ; Number Eyelets: 3
2, Luff: 4.244m ; Leech: 4.418m ; Offset: 0.000m ; Number Eyelets: 3

Draft Stripes

1, Luff: 3.536m ; Leech: 3.570m ;
2, Luff: 7.073m ; Leech: 7.291m ;
3, Luff: 10.611m ; Leech: 11.044m ;

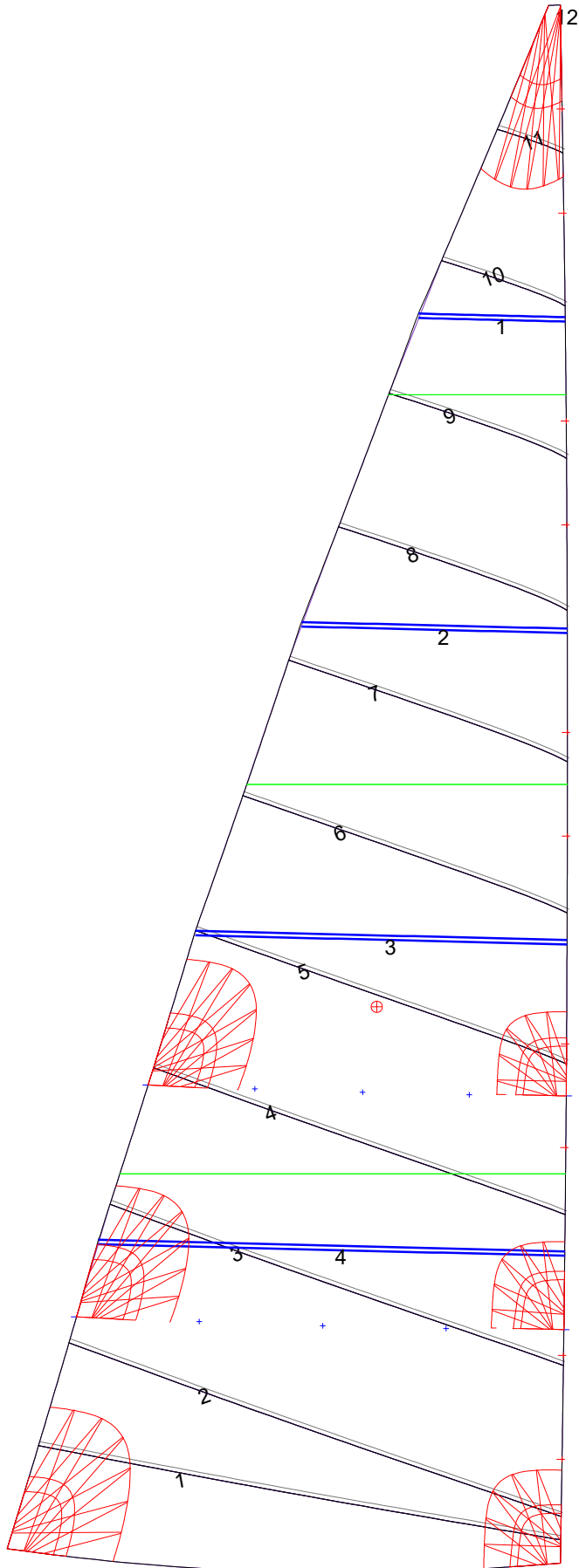
Luff Slides

1, Position: 0.944m
2, Position: 1.888m
3, Position: 3.775m
4, Position: 4.717m
5, Position: 6.602m
6, Position: 7.545m
7, Position: 9.430m
8, Position: 10.373m
9, Position: 12.261m
10, Position: 13.205m

Luff Curve

		Fanned Luff (@ 5.00% [0.251m])	Before BSeam
14.150m,	0.000m	100% (14.150m) :	0.000m
12.386m,	-0.029m	90% (12.735m) :	0.050m
10.612m,	-0.051m	80% (11.320m) :	0.099m
8.834m,	-0.061m	70% (9.905m) :	0.137m
7.075m,	-0.063m	60% (8.490m) :	0.158m
5.272m,	-0.059m	50% (7.075m) :	0.162m
3.537m,	-0.047m	40% (5.660m) :	0.148m
1.763m,	-0.027m	30% (4.245m) :	0.121m
0.000m,	0.000m	20% (2.830m) :	0.084m
		10% (1.415m) :	0.041m
		0% (0.000m) :	0.000m

Mainsail: 7000220 Negley mainV1.des



Seam Allowances			
Zone: 1	Split	Radial	Cross
	0.000m	0.000m	0.038m

Edge Excesses			
Sail:	Luff	Leech	Foot
	0.000m	0.000m	0.000m

Total Seam Lengths (m)

Horizontal	34.07
Radial/Vertical	0.00
Bi-Radial Split	0.00

Materials

Material	Area (m ²)	Panels
Material 1	41.29	1,2,3,4,5 6,7,8,9,10 11,12