

Mainsail: 7000220 Negley main.des

Design Info
=====

Design File:
\\Nas\工程部-专用文件\Queenie-跟进客户\Fareast Sails\2023 Order\Need Confrim Order\7000220 Negley\7000220 Ne

Initial Design Date: 28/2/2023
Boat:

Comments:

Client:

Design Data
=====

Main

Measurements

Luff geodesic:	14.150m
Leech geodesic:	14.906m
Foot geodesic:	5.040m
Head geodesic:	0.115m
Upper width (MUW):	0.962m
Three-quarter width (MTW):	1.794m
Half width (MHW):	3.169m
Quarter width (MQW):	4.198m
Foot median:	14.499m
ORC Mainsail area:	41.536m?
Surface area:	42.702m?
Clew height:	0.100m
Mast rake:	0.000m

Battens

Position	Length	Roach	Angle	Luff	Leech	Full
80.000%	1.555m	0.346m	72.148?	11.316m	11.880m	Full
60.000%	2.746m	0.465m	72.148?	8.488m	8.910m	Full
40.000%	3.662m	0.396m	72.148?	5.660m	5.940m	Full
20.000%	4.398m	0.226m	72.148?	2.832m	2.970m	Full

Reefing Points

- 1, Luff: 2.122m ; Leech: 2.195m ; Offset: 0.000m ; Number Eyelets: 3
- 2, Luff: 4.244m ; Leech: 4.393m ; Offset: 0.000m ; Number Eyelets: 3

Draft Stripes

- 1, Luff: 3.536m ; Leech: 3.547m ;
- 2, Luff: 7.073m ; Leech: 7.250m ;
- 3, Luff: 10.611m ; Leech: 11.005m ;

Luff Slides

- 1, Position: 0.944m
- 2, Position: 1.888m
- 3, Position: 3.775m
- 4, Position: 4.717m
- 5, Position: 6.602m
- 6, Position: 7.545m
- 7, Position: 9.430m
- 8, Position: 10.373m
- 9, Position: 12.261m
- 10, Position: 13.205m

Luff Curve

		Fanned Luff (@ 5.00% [0.251m])	Before BSeam
14.150m,	0.000m	100% (14.150m) :	0.000m
12.386m,	-0.029m	90% (12.735m) :	0.053m
10.612m,	-0.051m	80% (11.320m) :	0.104m
8.834m,	-0.061m	70% (9.905m) :	0.142m
7.075m,	-0.063m	60% (8.490m) :	0.164m
5.272m,	-0.059m	50% (7.075m) :	0.166m
3.537m,	-0.047m	40% (5.660m) :	0.151m
1.763m,	-0.027m	30% (4.245m) :	0.122m
0.000m,	0.000m	20% (2.830m) :	0.084m
		10% (1.415m) :	0.040m
		0% (0.000m) :	0.000m

Section Data

Position	Camber	Draft	Twist	Entry	Exit	Roach	Fwd Camb	Aft Camb
100.00%	6.165%	40.694%	18.989?	28.511?	-10.923?	0.000m	5.192%	4.558%
80.00%	11.039%	41.326%	15.191?	39.314?	-16.808?	0.000m	9.033%	8.058%
60.00%	12.580%	41.957%	11.394?	42.120?	-19.352?	0.000m	10.282%	9.220%
40.00%	11.131%	42.589%	7.596?	38.578?	-16.091?	0.000m	9.167%	8.051%
20.00%	7.870%	43.221%	3.798?	30.264?	-11.389?	0.000m	6.604%	5.658%
10.00%	5.807%	43.537%	1.899?	24.177?	-7.945?	0.000m	4.896%	4.101%
0.00%	3.000%	43.853%	0.000?	16.209?	-4.033?	0.000m	2.652%	2.083%

Mainsail: 7000220 Negley main.des

Chord Data

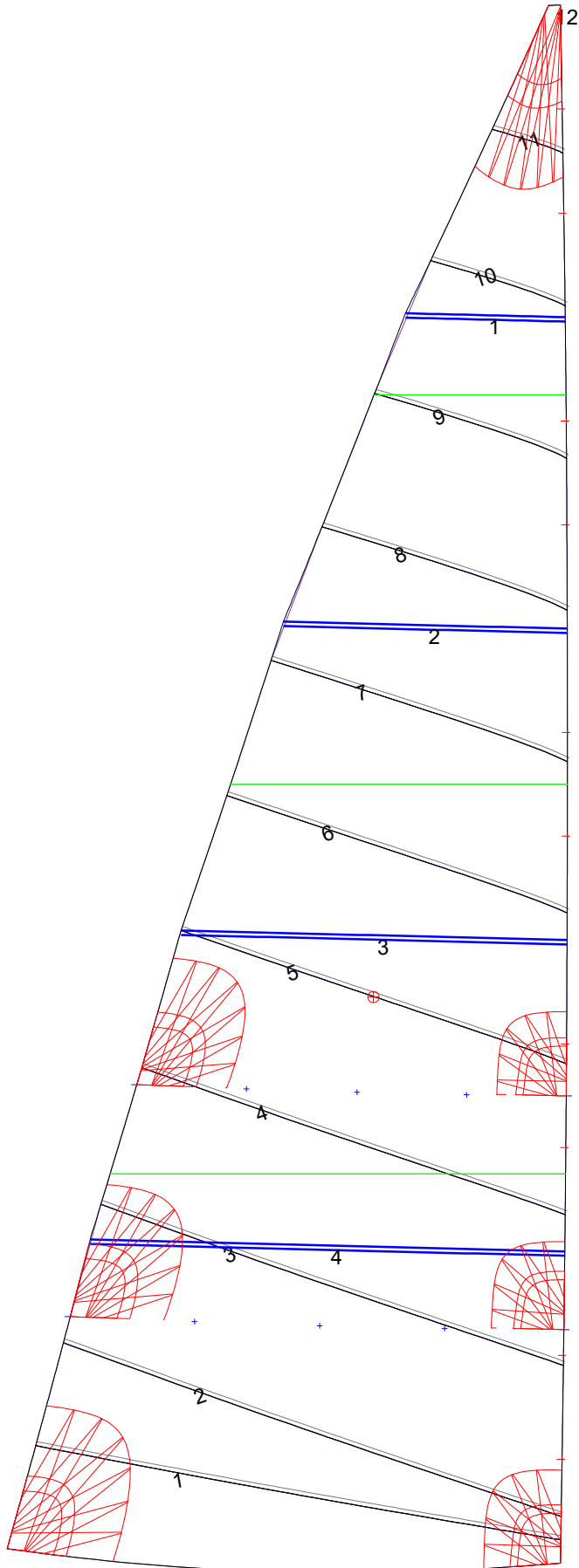
Luff P : 14.1496m
Foot E : 5.0222m
Leech : 14.9741m
Headboard width : 0.1136m

Include Headboard in Diagonal: Diagonal from Outer End of Headboard

Fanned Foot Curve Depths

25.0%	50.0%	75.0%
0.0936m	0.1300m	0.0973m

Mainsail: 7000220 Negley main.des



Seam Allowances

Zone: 1	Split	Radial	Cross
	0.000m	0.000m	0.038m

Edge Excesses

Sail:	Luff	Leech	Foot
	0.000m	0.000m	0.000m

Total Seam Lengths (m)

Horizontal	35.20
Radial/Vertical	0.00
Bi-Radial Split	0.00

Materials

Material	Area (m ²)	Panels
Material 1	42.74	1,2,3,4,5 6,7,8,9,10 11,12