

Mainsail: 6000316 Massimo -V1.des

Design Info
=====

Design File:
F:\Dropbox\Dropbox\Fareast Sails\2022 Order\Need confirm order\6000316 Massimo\6000316 Massimo -V1.des

Initial Design Date: 30/3/2022
Boat:

Comments:

Client:

Design Data
=====

Main

Measurements

Luff geodesic: 15.600m
 Leech geodesic: 16.221m
 Foot geodesic: 4.950m
 Head geodesic: 0.200m
 Upper width (MUW): 0.993m
 Three-quarter width (MTW): 1.784m
 Half width (MHW): 3.103m
 Quarter width (MQW): 4.113m
 Foot median: 15.912m
 ORC Mainsail area: 45.144m?
 Surface area: 46.206m?
 Clew height: 0.100m
 Mast rake: 0.000m

Battens

Position	Length	Roach	Angle	Luff	Leech	Full
80.000%	1.547m	0.291m	74.484?	12.472m	12.940m	Full
60.000%	2.682m	0.391m	74.484?	9.353m	9.705m	Full
40.000%	3.574m	0.333m	74.484?	6.235m	6.470m	Full
20.000%	4.306m	0.190m	74.484?	3.117m	3.235m	Full

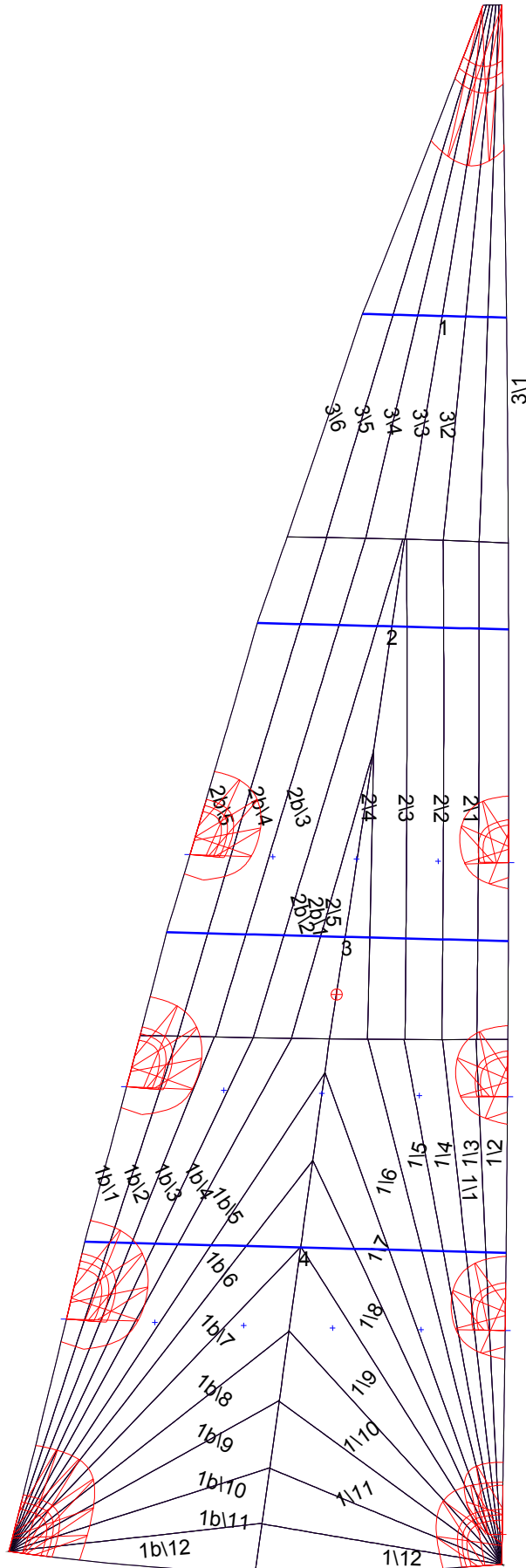
Reefing Points

- 1, Luff: 2.339m ; Leech: 2.405m ; Offset: 0.000m ; Number Eyelets: 4
- 2, Luff: 4.679m ; Leech: 4.811m ; Offset: 0.000m ; Number Eyelets: 3
- 3, Luff: 7.018m ; Leech: 7.220m ; Offset: 0.000m ; Number Eyelets: 3

Luff Curve

		Fanned Luff (@ 5.00% [0.247m])	Before BSeam
15.600m,	0.000m	100% (15.600m) :	0.000m
13.656m,	-0.032m	90% (14.040m) :	0.054m
11.700m,	-0.056m	80% (12.480m) :	0.105m
9.739m,	-0.068m	70% (10.920m) :	0.144m
7.800m,	-0.070m	60% (9.360m) :	0.166m
5.813m,	-0.065m	50% (7.800m) :	0.168m
3.900m,	-0.052m	40% (6.240m) :	0.154m
1.944m,	-0.029m	30% (4.680m) :	0.125m
0.000m,	0.000m	20% (3.120m) :	0.086m
		10% (1.560m) :	0.042m
		0% (0.000m) :	0.000m

Mainsail: 6000316 Massimo -V1.des



Seam Allowances

	Split	Radial	Cross
Zone: 1/a	0.038m	0.015m	0.038m
Zone: 1/b	0.038m	0.015m	0.038m
Zone: 2/a	0.038m	0.015m	0.038m
Zone: 2/b	0.038m	0.015m	0.038m
Zone: 3	0.038m	0.015m	0.038m

Edge Excesses

Sail:	Luff	Leech	Foot
	0.000m	0.000m	0.000m

Total Seam Lengths (m)

Horizontal	6.19
Radial/Vertical	159.84
Bi-Radial Split	10.80

Materials

Material	Area (m ²)	Panels
Material 1	46.29	1\1,1\2,1\3,1\4,1\5 1\6,1\7,1\8,1\9,1\10 1\11,1\12,1b\1,1b\2,1b\3 1b\4,1b\5,1b\6,1b\7,1b\8 1b\9,1b\10,1b\11,1b\12,2\1 2\2,2\3,2\4,2\5,2b\1 2b\2,2b\3,2b\4,2b\5,3\1 3\2,3\3,3\4,3\5,3\6