

Mainsail: 6000225 Rob-Mizzen.des

Design Info
=====

Design File:
F:\Dropbox\Dropbox\Fareast Sails\2022 Order\Need confirm order\6000225 Rob\6000225 Rob-Mizzen.des

Initial Design Date: 25/5/2022
Boat:

Comments:

Client:

Design Data
=====

Main

Measurements

Luff geodesic: 8.910m
Leech geodesic: 9.163m
Foot geodesic: 2.574m
Head geodesic: 0.115m
Upper width (MUW): 0.519m
Three-quarter width (MTW): 0.923m
Half width (MHW): 1.602m
Quarter width (MQW): 2.131m
Foot median: 8.992m
ORC Mainsail area: 13.364m?
Surface area: 13.542m?
Clew height: 0.100m
Mast rake: 0.000m

Battens

Position	Length	Roach	Angle	Luff	Leech	Full
80.000%	0.539m	0.133m	76.689?	7.122m	7.314m	
60.000%	0.770m	0.179m	76.689?	5.341m	5.485m	
40.000%	0.770m	0.153m	76.689?	3.560m	3.657m	
20.000%	0.642m	0.087m	76.689?	1.780m	1.828m	

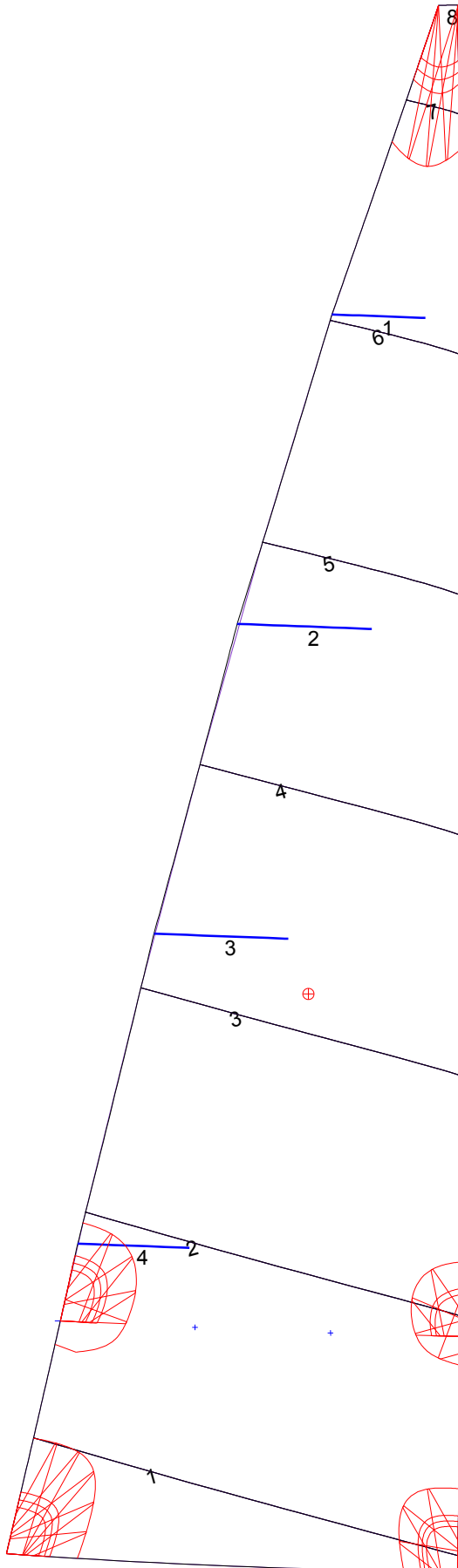
Reefing Points

1, Luff: 1.336m ; Leech: 1.364m ; Offset: 0.000m ; Number Eyelets: 2

Luff Curve

		Fanned Luff (@ 5.00% [0.128m])	Before BSeam
8.910m,	0.000m	100% (8.910m) :	0.000m -0.000m
7.799m,	-0.019m	90% (8.019m) :	0.010m 0.029m
6.682m,	-0.032m	80% (7.128m) :	0.020m 0.056m
5.562m,	-0.039m	70% (6.237m) :	0.025m 0.077m
4.455m,	-0.040m	60% (5.346m) :	0.027m 0.089m
3.320m,	-0.037m	50% (4.455m) :	0.027m 0.091m
2.227m,	-0.030m	40% (3.564m) :	0.025m 0.083m
1.110m,	-0.017m	30% (2.673m) :	0.021m 0.068m
0.000m,	0.000m	20% (1.782m) :	0.016m 0.047m
		10% (0.891m) :	0.008m 0.023m
		0% (0.000m) :	0.000m 0.000m

Mainsail: 6000225 Rob-Mizzen.des



Seam Allowances			
Zone: 1	Split	Radial	Cross
	0.000m	0.000m	0.025m

Edge Excesses			
Sail:	Luff	Leech	Foot
	0.000m	0.000m	0.000m

Total Seam Lengths (m)

Horizontal	10.81
Radial/Vertical	0.00
Bi-Radial Split	0.00

Materials

Material	Area (m ²)	Panels
Material 1	13.54	1,2,3,4,5 6,7,8