

Batten and batten pockets dimensions - 6000122 Björn

Dimensions battens and batten pockets for all battens except batten nr 5 (not full length: 2078mm)

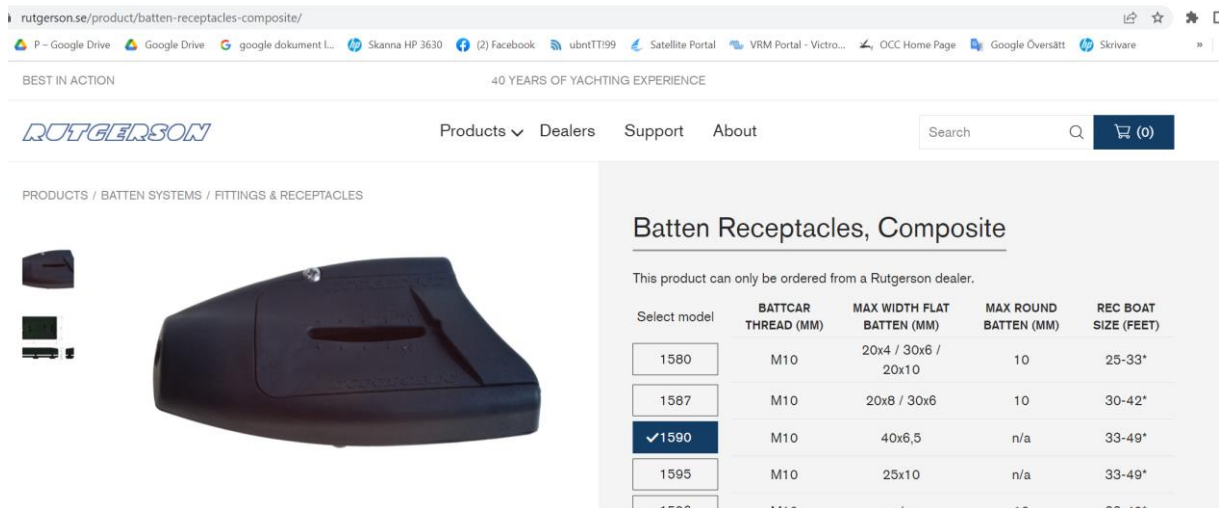
Battens are originally 20,5 mm wide and 10 mm thick.

They have been grinded to a thinner thickness on a part of the batten from the luff end to give the sail a correct profile. There are no end caps (except for luff end of batten nr 5 as described later.)

Typical thickness in the luff (mast) end at the batten holder could be like 5 to about 8 mm.

I can see that Rutgerson 1590 fits battens up to 40x6,5 mm but Rutgerson 1595 fits battens up to 25x10 mm. Use 1595 if you have, otherwise we have to grind off some of the thickness on some of the battens.

Batten pockets are 65 mm between the seams and a total width of about 90 mm of the material.



rutgerson.se/product/batten-receptacles-composite/

P - Google Drive Google Drive google dokument L Skanna HP 3630 (2) Facebook ubntTT199 Satellite Portal VRM Portal - Victro... OCC Home Page Google Översätt Skrivare

BEST IN ACTION 40 YEARS OF YACHTING EXPERIENCE

RUTGERSON Products Dealers Support About Search (0)

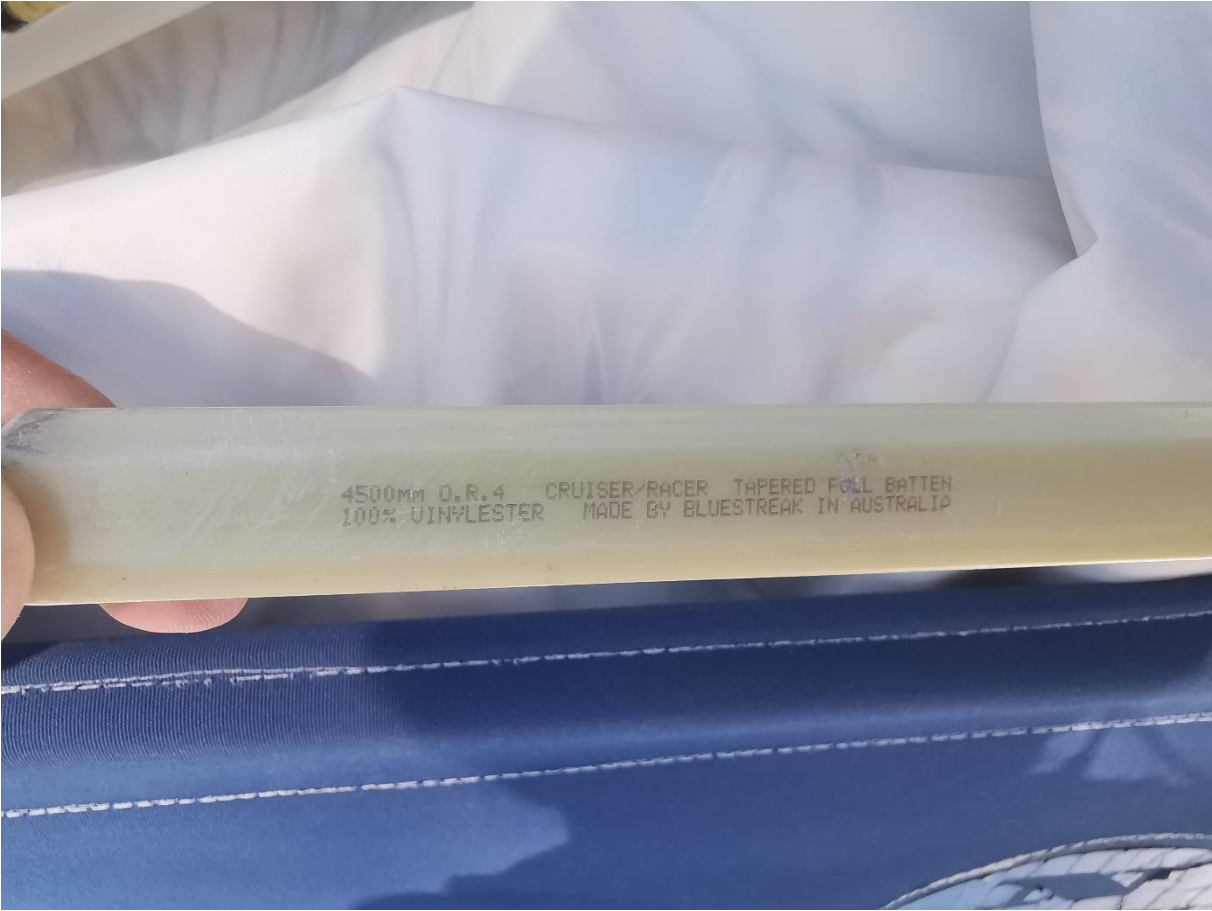
PRODUCTS / BATTEN SYSTEMS / FITTINGS & RECEPTACLES

Batten Receptacles, Composite

This product can only be ordered from a Rutgerson dealer.

Select model	BATTCAR THREAD (MM)	MAX WIDTH FLAT BATTEN (MM)	MAX ROUND BATTEN (MM)	REC BOAT SIZE (FEET)
1580	M10	20x4 / 30x6 / 20x10	10	25-33*
1587	M10	20x8 / 30x6	10	30-42*
✓ 1590	M10	40x6,5	n/a	33-49*
1595	M10	25x10	n/a	33-49*
1506	M10	n/a	10	22-40*

Batten type



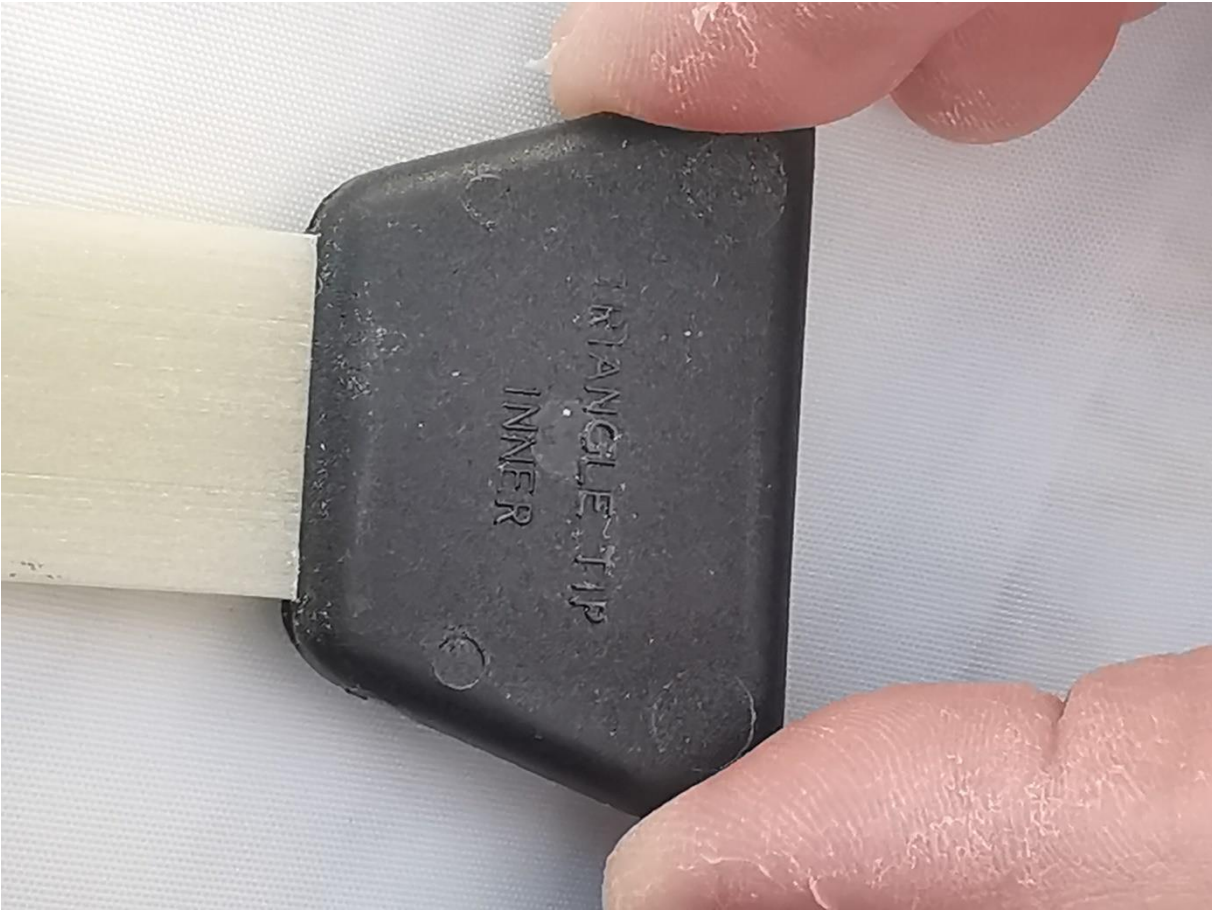
Batten nr 5 (not full length): 2078mm with no batten holder
Fitted with velcro pocket lock in the luff end (no batten holder on nr 5).
It has a plastic end cap in luff end 45 mm wide and 7 mm thick



Luff end of batten nr 5



Back side of luff end batten nr 5.



Batten pocket luff end batten nr 5 with velcro lock.

