

# Mainsail: 6000122 mainsail-v4

Design Info  
=====

Design File:  
E:\dropbox\Dropbox\Fareast Sails\2022 Order\6000122\6000122 mainsail-v4.des

Initial Design Date: 30/1/2022  
Boat:

Comments:

Client:

Design Data  
=====

## Main

### Measurements

Luff geodesic:	13.900m
Leech geodesic:	14.270m
Foot geodesic:	5.700m
Head geodesic:	1.550m
Upper width (MUW):	1.871m
Three-quarter width (MTW):	2.580m
Half width (MHW):	3.755m
Quarter width (MQW):	4.755m
Foot median:	13.923m
ORC Mainsail area:	50.758m <sup>2</sup>
Surface area:	52.030m <sup>2</sup>
Clew height:	0.520m
Mast rake:	0.800m

### Battens

Position	Length	Roach	Angle	Luff	Leech	Full
100.000%	1.773m	0.000m	100.887?	13.056m	14.213m	Full
94.613%	1.872m	0.054m	81.022?	12.913m	13.447m	Full
87.876%	2.078m	0.092m	81.022?	11.992m	12.490m	
75.305%	2.810m	0.114m	81.022?	10.274m	10.703m	Full
57.291%	3.602m	0.122m	81.022?	7.814m	8.143m	Full
38.961%	4.336m	0.101m	81.022?	5.313m	5.538m	Full
21.838%	4.946m	0.052m	81.022?	2.977m	3.104m	Full

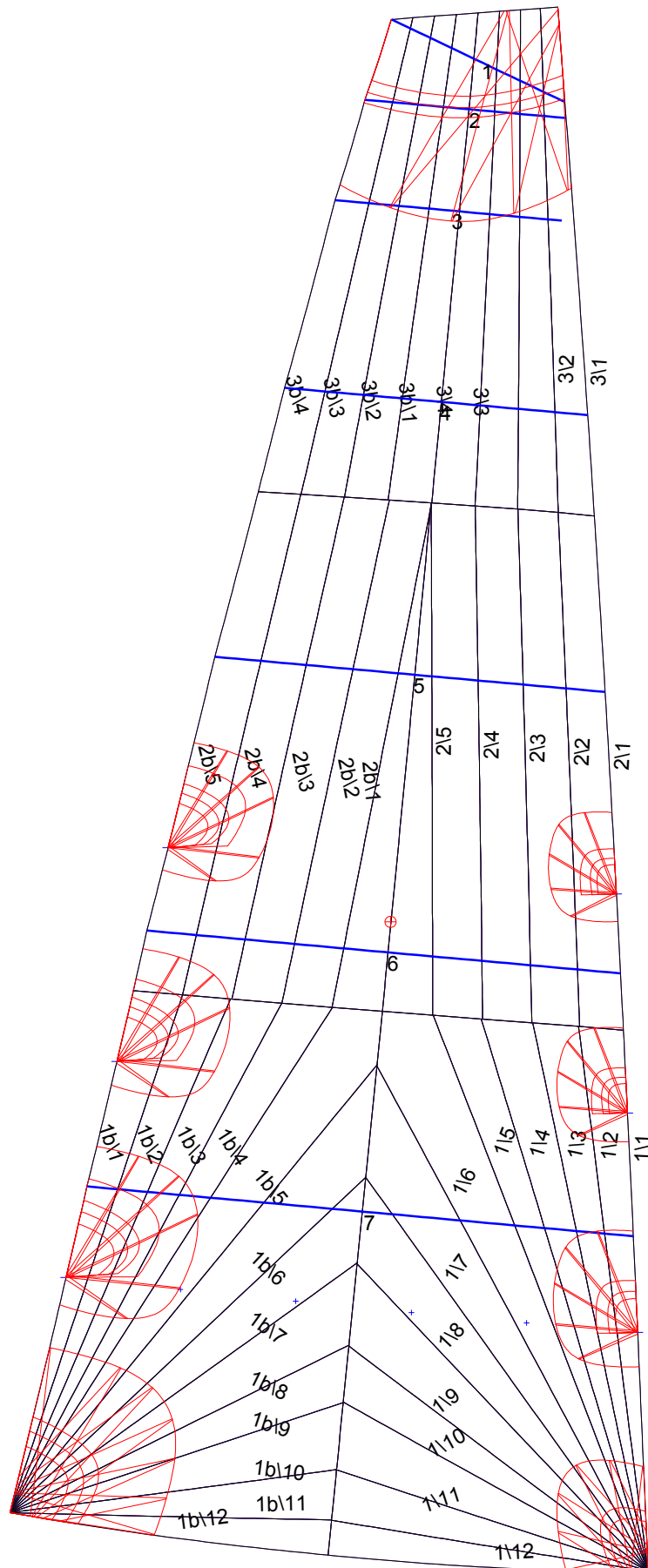
### Reefing Points

1, Luff: 2.120m ; Leech: 2.150m ; Offset: 0.000m ; Number Eyelets: 4  
 2, Luff: 4.070m ; Leech: 4.120m ; Offset: 0.000m ; Number Eyelets: 0  
 3, Luff: 6.015m ; Leech: 6.070m ; Offset: 0.000m ; Number Eyelets: 0

### Luff Curve

		Fanned Luff (@ 5.00% [0.283m])	Before BSeam	
13.900m,	0.000m	100% (13.900m) :	0.000m	-0.000m
10.425m,	-0.054m	90% (12.511m) :	0.018m	0.041m
6.950m,	-0.067m	80% (11.120m) :	0.036m	0.079m
3.475m,	-0.046m	70% (9.730m) :	0.047m	0.107m
0.000m,	0.000m	60% (8.340m) :	0.053m	0.123m
		50% (6.950m) :	0.052m	0.128m
		40% (5.560m) :	0.047m	0.120m
		30% (4.170m) :	0.038m	0.100m
		20% (2.780m) :	0.026m	0.070m
		10% (1.391m) :	0.011m	0.034m
		0% (0.000m) :	0.000m	0.000m

# Mainsail: 6000122 mainsail-v4



## Seam Allowances

Zone:	Split	Radial	Cross
Zone: 1/a	0.038m	0.015m	0.038m
Zone: 1/b	0.038m	0.015m	0.038m
Zone: 2/a	0.038m	0.015m	0.038m
Zone: 2/b	0.038m	0.015m	0.038m
Zone: 3/a	0.038m	0.015m	0.038m
Zone: 3/b	0.038m	0.015m	0.038m

## Edge Excesses

Sail:	Luff	Leech	Foot
Sail:	0.000m	0.000m	0.000m

## Total Seam Lengths (m)

Horizontal	7.58
Radial/Vertical	155.06
Bi-Radial Split	14.17

## Materials

Material	Area (m <sup>2</sup> )	Panels
Material 1	52.11	1\1, 1\2, 1\3, 1\4, 1\5 1\6, 1\7, 1\8, 1\9, 1\10 1\11, 1\12, 1b\1, 1b\2, 1b\3 1b\4, 1b\5, 1b\6, 1b\7, 1b\8 1b\9, 1b\10, 1b\11, 1b\12, 2\1 2\2, 2\3, 2\4, 2\5, 2b\1 2b\2, 2b\3, 2b\4, 2b\5, 3\1 3\2, 3\3, 3\4, 3b\1, 3b\2 3b\3, 3b\4