

Mainsail: 6000122 mainsail-v3.des

Design Info
=====

Design File:
E:\Dropbox\Fareast Sails\2022 Order\6000122\6000122 mainsail-v3.des

Initial Design Date: 30/1/2022
Boat:

Comments:

Client:

Design Data
=====

Main

Measurements

Luff geodesic:	13.900m
Leech geodesic:	14.270m
Foot geodesic:	5.700m
Head geodesic:	1.550m
Upper width (MUW):	1.909m
Three-quarter width (MTW):	2.614m
Half width (MHW):	3.805m
Quarter width (MQW):	4.804m
Foot median:	13.923m
ORC Mainsail area:	51.255m ²
Surface area:	52.607m ²
Clew height:	0.522m
Mast rake:	0.800m

Battens

Position	Length	Roach	Angle	Luff	Leech	Full
100.000%	1.775m	0.000m	100.942?	13.054m	14.211m	Full
94.613%	1.916m	0.107m	78.738?	12.984m	13.446m	Full
87.876%	2.078m	0.136m	78.866?	12.071m	12.488m	
75.305%	2.833m	0.150m	78.502?	10.390m	10.702m	Full
57.291%	3.637m	0.177m	77.592?	8.017m	8.142m	Full
38.961%	4.366m	0.151m	78.023?	5.530m	5.537m	Full
21.838%	4.974m	0.102m	77.959?	3.237m	3.103m	Full

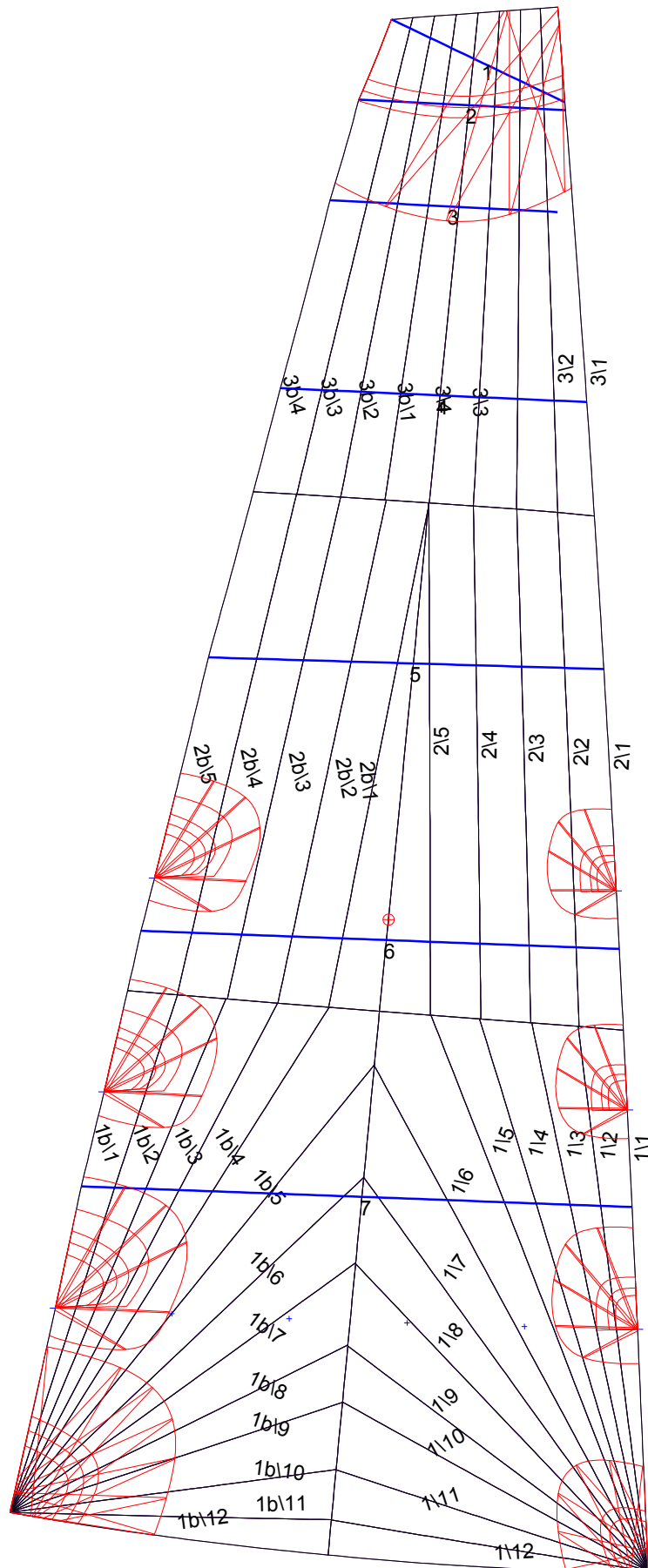
Reefing Points

1, Luff: 2.149m ; Leech: 1.860m ; Offset: 0.000m ; Number Eyelets: 4
 2, Luff: 4.098m ; Leech: 3.829m ; Offset: 0.000m ; Number Eyelets: 0
 3, Luff: 6.042m ; Leech: 5.780m ; Offset: 0.000m ; Number Eyelets: 0

Luff Curve

		Fanned Luff (@ 5.00% [0.283m])	Before BSeam
13.900m,	0.000m	100% (13.900m) :	0.000m
10.425m,	-0.054m	90% (12.511m) :	0.019m
6.950m,	-0.067m	80% (11.120m) :	0.036m
3.475m,	-0.046m	70% (9.730m) :	0.048m
0.000m,	0.000m	60% (8.340m) :	0.054m
		50% (6.950m) :	0.053m
		40% (5.560m) :	0.048m
		30% (4.170m) :	0.039m
		20% (2.780m) :	0.026m
		10% (1.391m) :	0.011m
		0% (0.000m) :	0.000m

Mainsail: 6000122 mainsail-v3.des



Seam Allowances

Zone:	Split	Radial	Cross
Zone: 1/a	0.038m	0.015m	0.038m
Zone: 1/b	0.038m	0.015m	0.038m
Zone: 2/a	0.038m	0.015m	0.038m
Zone: 2/b	0.038m	0.015m	0.038m
Zone: 3/a	0.038m	0.015m	0.038m
Zone: 3/b	0.038m	0.015m	0.038m

Edge Excesses

Sail:	Luff	Leech	Foot
Sail:	0.000m	0.000m	0.000m

Total Seam Lengths (m)

Horizontal	7.68
Radial/Vertical	155.03
Bi-Radial Split	14.16

Materials

Material	Area (m ²)	Panels
Material 1	52.69	1\1, 1\2, 1\3, 1\4, 1\5 1\6, 1\7, 1\8, 1\9, 1\10 1\11, 1\12, 1b\1, 1b\2, 1b\3 1b\4, 1b\5, 1b\6, 1b\7, 1b\8 1b\9, 1b\10, 1b\11, 1b\12, 2\1 2\2, 2\3, 2\4, 2\5, 2b\1 2b\2, 2b\3, 2b\4, 2b\5, 3\1 3\2, 3\3, 3\4, 3b\1, 3b\2 3b\3, 3b\4