

Mainsail: 3001141 Scott -2 Mizzen R2

Design Info
=====

Design File:
E:\Dropbox\Dropbox\Mike computer\Fareast Sails Production\2020\3001141 Scott -1-2\3001141 Scott -2 Mizzen R2.d

Initial Design Date: 4/2/2020
Boat:

Comments:

Client:

Design Data
=====

Main

Measurements

Luff geodesic:	20.660Ft
Leech geodesic:	23.000Ft
Foot geodesic:	8.160Ft
Head geodesic:	0.377Ft
Upper width (MUW):	1.558Ft
Three-quarter width (MTW):	2.776Ft
Half width (MHW):	4.892Ft
Quarter width (MQW):	6.587Ft
Foot median:	21.618Ft
ORC Mainsail area:	95.620Ft?
Surface area:	97.562Ft?

Battens

Position	Length	Roach	Angle	Full
80.000%	1.414Ft	0.322Ft	63.758?	
60.000%	2.297Ft	0.444Ft	63.758?	
40.000%	2.297Ft	0.369Ft	63.758?	
20.000%	2.297Ft	0.210Ft	63.758?	

Reefing Points

1, Luff: 2.794Ft ; Leech: 3.050Ft ; Offset: 0.000Ft ; Number Eyelets: 2

Luff Curve

		Fanned Luff (@ 5.00% [0. Before BSeam	
20.659Ft,	0.000Ft	100% (20.660Ft) :	0.000Ft 0.000Ft
18.085Ft,	-0.043Ft	90% (18.593Ft) :	0.024Ft 0.078Ft
15.494Ft,	-0.074Ft	80% (16.529Ft) :	0.045Ft 0.153Ft
12.898Ft,	-0.089Ft	70% (14.462Ft) :	0.058Ft 0.212Ft
10.329Ft,	-0.093Ft	60% (12.396Ft) :	0.062Ft 0.246Ft
7.698Ft,	-0.086Ft	50% (10.330Ft) :	0.062Ft 0.251Ft
5.165Ft,	-0.069Ft	40% (8.264Ft) :	0.057Ft 0.229Ft
2.574Ft,	-0.039Ft	30% (6.198Ft) :	0.048Ft 0.186Ft
0.000Ft,	0.000Ft	20% (4.132Ft) :	0.034Ft 0.129Ft
		10% (2.065Ft) :	0.017Ft 0.063Ft
		0% (0.000Ft) :	0.000Ft 0.000Ft

Mainsail: 3001141 Scott -2 Mizzen R2

Seam Allowances			
Zone: 1	Split	Radial	Cross
	0.000Ft	0.000Ft	0.082Ft

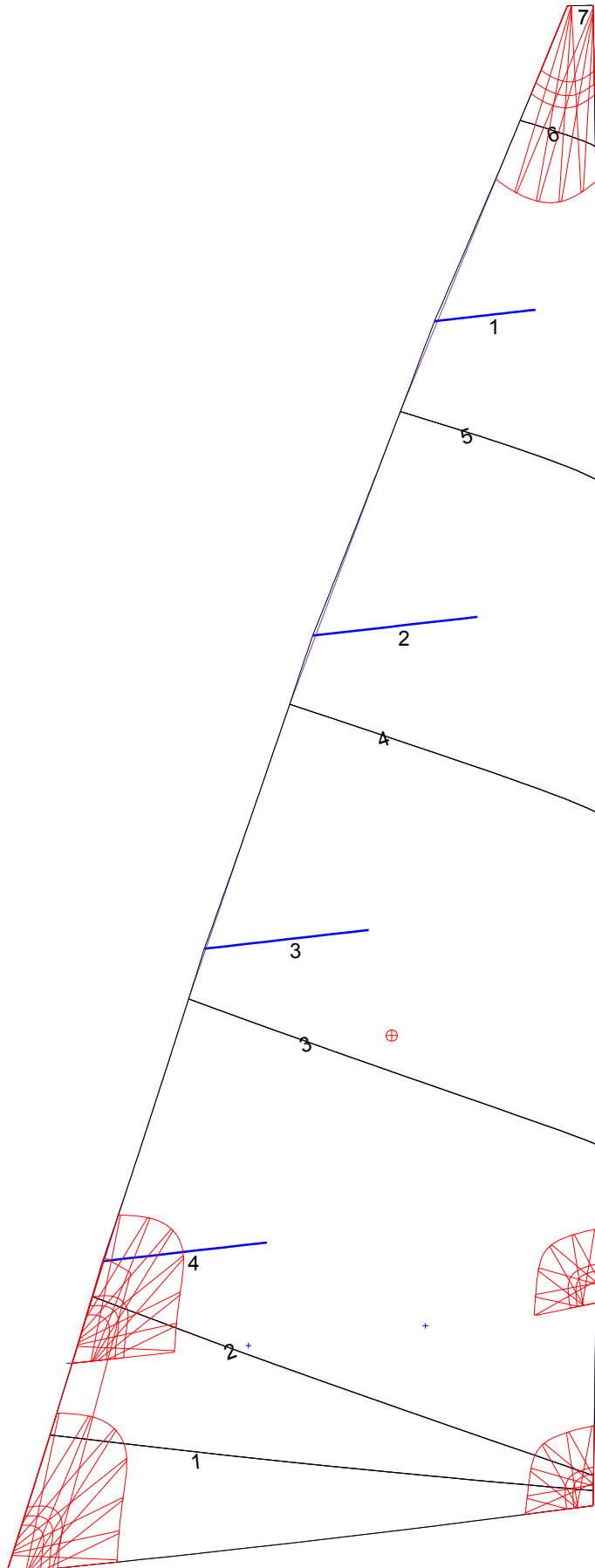
Edge Excesses			
Sail:	Luff	Leech	Foot
	0.000Ft	0.000Ft	0.000Ft

Total Seam Lengths (Ft)

Horizontal	0.00
Radial/Vertical	0.00
Bi-Radial Split	0.00

Materials

Material	Area (Ft ²)	Panels
Material 1	97.42	1,2,3,4,5 6,7



Mainsail: 3001141 Scott -2 Mizzen R2

