

# Mainsail: 3001103 Sean-1 mainsail R1

Design Info  
=====

Design File:  
E:\Dropbox\Dropbox\Mike computer\Fareast Sails Production\2020\3001103 Sean-1-2-3\3001103 Sean-1 mainsail R1.

Initial Design Date: 2/1/2020  
Boat:  
Client:

Comments:  
Tack angle 88.5 degree  
mast rake 305mm

Design Data  
=====

Main

Measurements

Luff geodesic: 51.020Ft  
Leech geodesic: 53.928Ft  
Foot geodesic: 18.481Ft  
Head geodesic: 0.689Ft  
Upper width (MUW): 3.066Ft  
Three-quarter width (MTW): 5.534Ft  
Half width (MHW): 10.270Ft  
Quarter width (MQW): 14.551Ft  
Foot median: 52.286Ft  
ORC Mainsail area: 509.128Ft?  
Surface area: 516.022Ft?

Battens

Position	Length	Roach	Angle	Full
80.000%	3.346Ft	0.000Ft	72.160?	
60.000%	5.249Ft	0.000Ft	72.160?	
40.000%	12.051Ft	0.000Ft	72.160?	Full
20.000%	15.357Ft	0.000Ft	72.160?	Full

Reefing Points

1, Luff: 7.650Ft ; Leech: 8.093Ft ; Offset: 0.000Ft ; Number Eyelets: 4  
2, Luff: 15.300Ft ; Leech: 16.162Ft ; Offset: 0.000Ft ; Number Eyelets: 4

Luff Curve

Luff Curve		Fanned Luff (@ 5.00% [0. Before BSeam	
51.017Ft,	0.000Ft	100% (51.020Ft) :	0.000Ft 0.000Ft
44.660Ft,	-0.153Ft	90% (45.919Ft) :	0.089Ft 0.202Ft
38.263Ft,	-0.264Ft	80% (40.816Ft) :	0.170Ft 0.395Ft
31.850Ft,	-0.319Ft	70% (35.715Ft) :	0.220Ft 0.544Ft
25.508Ft,	-0.331Ft	60% (30.612Ft) :	0.241Ft 0.632Ft
19.009Ft,	-0.306Ft	50% (25.510Ft) :	0.243Ft 0.653Ft
12.754Ft,	-0.245Ft	40% (20.408Ft) :	0.229Ft 0.611Ft
6.357Ft,	-0.139Ft	30% (15.306Ft) :	0.196Ft 0.510Ft
0.000Ft,	0.000Ft	20% (10.203Ft) :	0.144Ft 0.363Ft
		10% (5.102Ft) :	0.075Ft 0.181Ft
		0% (0.000Ft) :	0.000Ft 0.000Ft

# Mainsail: 3001103 Sean-1 mainsail R1

## Seam Allowances

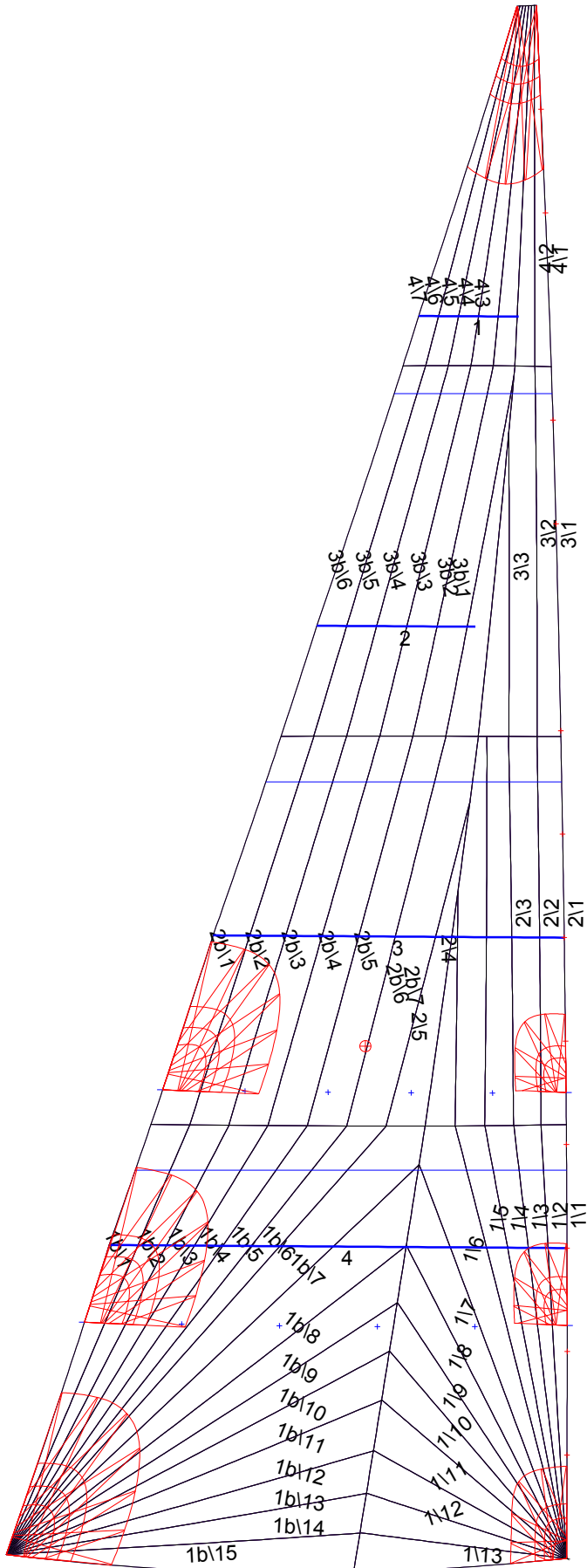
Zone:	Split	Radial	Cross
Zone: 1/a	0.125Ft	0.049Ft	0.148Ft
Zone: 1/b	0.125Ft	0.049Ft	0.148Ft
Zone: 2/a	0.125Ft	0.049Ft	0.148Ft
Zone: 2/b	0.125Ft	0.049Ft	0.148Ft
Zone: 3/a	0.125Ft	0.049Ft	0.148Ft
Zone: 3/b	0.125Ft	0.049Ft	0.148Ft
Zone: 4	0.125Ft	0.049Ft	0.148Ft

## Edge Excesses

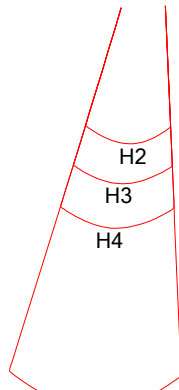
Sail:	Luff	Leech	Foot
Sail:	0.000Ft	0.000Ft	0.000Ft

## Materials

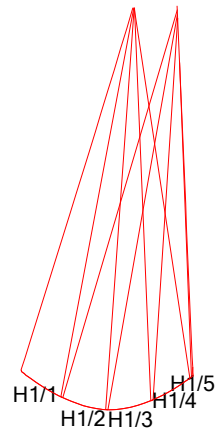
Material	Area (Ft <sup>2</sup> )	Panels
Material 1	517.02	1\1,1\2,1\3,1\4,1\5 1\6,1\7,1\8,1\9,1\10 1\11,1\12,1\13,1b\1,1b\2 1b\3,1b\4,1b\5,1b\6,1b\7 1b\8,1b\9,1b\10,1b\11,1b\12 1b\13,1b\14,1b\15,2\1,2\2 2\3,2\4,2\5,2b\7,2b\6 2b\5,2b\4,2b\3,2b\2,2b\1 3\1,3\2,3\3,3b\1,3b\2 3b\3,3b\4,3b\5,3b\6,4\1 4\2,4\3,4\4,4\5,4\6 4\7



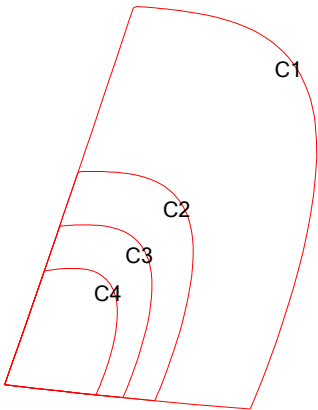
# Mainsail: 3001103 Sean-1 mainsail R1



H1



H1/1  
H1/2 H1/3  
H1/4  
H1/5

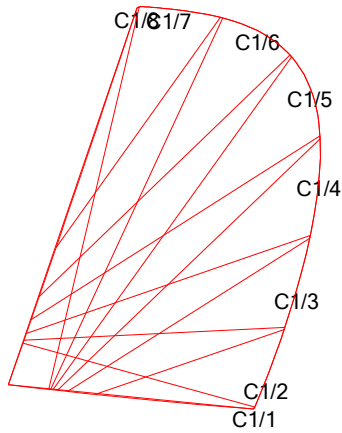


C1

C2

C3

C4



C1/7

C1/6

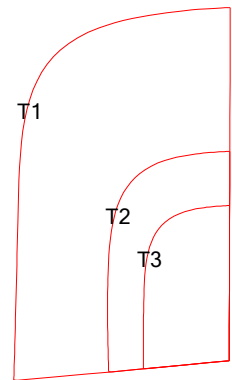
C1/5

C1/4

C1/3

C1/2

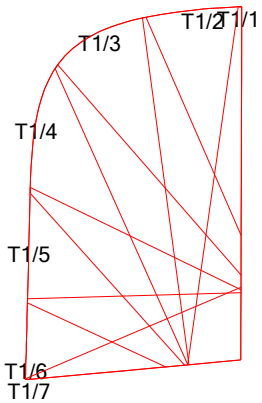
C1/1



T1

T2

T3



T1/7

T1/6

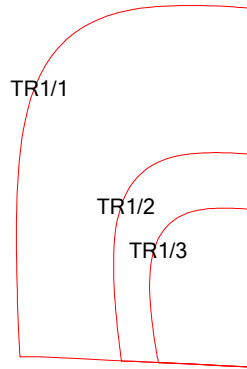
T1/5

T1/4

T1/3

T1/2

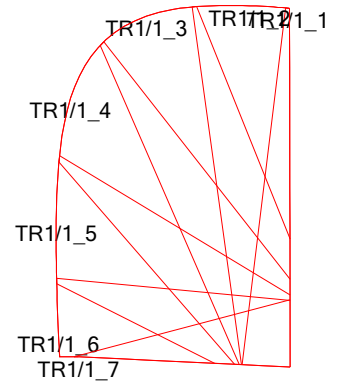
T1/1



TR1/1

TR1/2

TR1/3



TR1/1\_7

TR1/1\_6

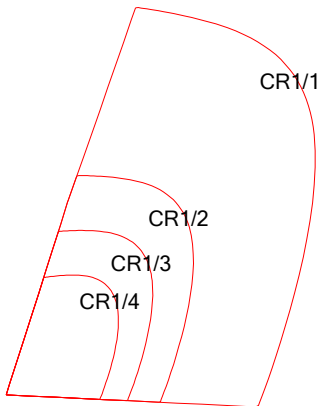
TR1/1\_5

TR1/1\_4

TR1/1\_3

TR1/1\_2

TR1/1\_1

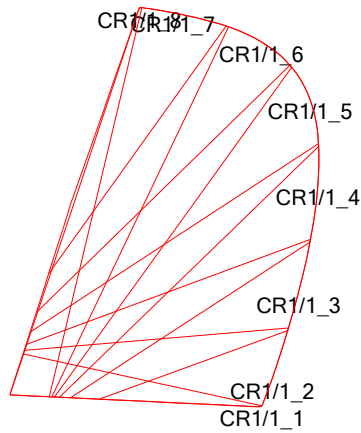


CR1/1

CR1/2

CR1/3

CR1/4



CR1/1\_7

CR1/1\_6

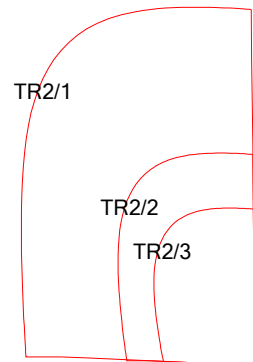
CR1/1\_5

CR1/1\_4

CR1/1\_3

CR1/1\_2

CR1/1\_1



TR2/1

TR2/2

TR2/3

# Mainsail: 3001103 Sean-1 mainsail R1

