

# Gaff Sail: Fore Gaff

Design Info  
=====

Design File:  
E:\Dropbox\Dropbox\Mike computer\Fareast Sails Production\2019\新建文件夹\Fore Gaff.des

Initial Design Date: 1/8/2019  
Boat:

Comments:

Client:

Design Data  
=====

## Gaff - High Aspect Ratio

### Measurements

Luff Geodesic:	7.740m
Leech Geodesic:	9.750m
Foot Geodesic:	6.400m
Head Geodesic:	5.680m
Diagonal Girth:	8.970m
Foot Median:	7.845m
Girth (50%-50%):	5.810m
Surface Area:	49.244m?

### Reefing Points

1, Luff: 2.750m ; Leech: 2.706m ; Offset: 0.000m ; Number Eyelets: 6  
2, Luff: 5.500m ; Leech: 5.400m ; Offset: 0.000m ; Number Eyelets: 6

### Luff Curve

7.740m,	0.000m
5.805m,	0.000m
3.870m,	0.000m
1.935m,	0.000m
0.000m,	0.000m

### Fanned Luff (@ 5.00% [0. Before BSeam

100% (12.301m) :	-0.000m	0.000m
90% (11.122m) :	0.620m	0.730m
81% (9.939m) :	1.246m	1.469m
71% (8.760m) :	1.867m	2.188m
62% (7.581m) :	2.499m	2.901m
51% (6.266m) :	2.289m	2.640m
41% (5.015m) :	1.828m	2.113m
31% (3.762m) :	1.368m	1.581m
20% (2.510m) :	0.909m	1.051m
10% (1.254m) :	0.451m	0.520m
0% (0.000m) :	0.000m	0.000m

# Gaff Sail: Fore Gaff

## Seam Allowances

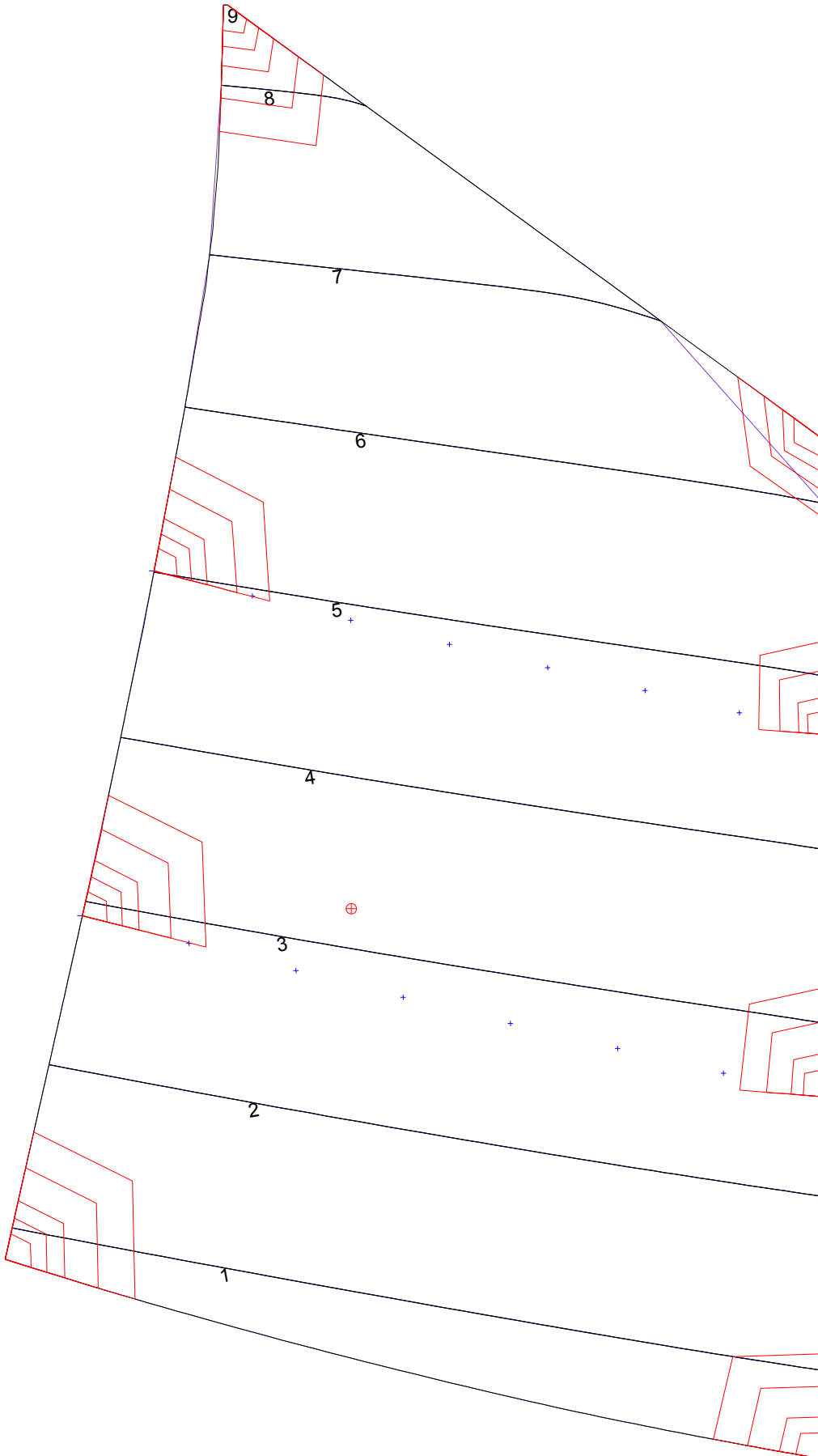
Zone: 1	Split	Radial	Cross
	0.000m	0.000m	0.038m

## Edge Excesses

Sail:	Luff	Leech	Foot
	0.000m	0.000m	0.000m

## Materials

Material	Area (m <sup>2</sup> )	Panels
Material 1	48.99	1,2,3,4,5 6,7,8,9



# Gaff Sail: Fore Gaff

