

Mainsail: 3000705 Colin mainsail R1

Design Info
=====

Design File:
E:\Dropbox\Dropbox\Mike computer\Fareast Sails Production\2019\3000705 Colin\3000705 Colin mainsail R1.des

Initial Design Date: 11/7/2019
Boat:

Comments:
tack angel 88.5

Client:

Design Data
=====

Main

Measurements

Luff geodesic:	21.180Ft
Leech geodesic:	23.792Ft
Foot geodesic:	9.180Ft
Head geodesic:	0.377Ft
Upper width (MUW):	1.681Ft
Three-quarter width (MTW):	3.033Ft
Half width (MHW):	5.459Ft
Quarter width (MQW):	7.523Ft
Foot median:	23.049Ft
ORC Mainsail area:	116.005Ft?
Surface area:	119.550Ft?

Battens

Position	Length	Roach	Angle	Full
80.000%	1.542Ft	0.311Ft	90.000?	
60.000%	2.297Ft	0.429Ft	90.000?	
40.000%	2.297Ft	0.362Ft	90.000?	
20.000%	1.969Ft	0.212Ft	90.000?	

Reefing Points

1, Luff: 3.572Ft ; Leech: 3.758Ft ; Offset: 0.000Ft ; Number Eyelets: 2
2, Luff: 7.367Ft ; Leech: 7.759Ft ; Offset: 0.000Ft ; Number Eyelets: 2

Luff Curve

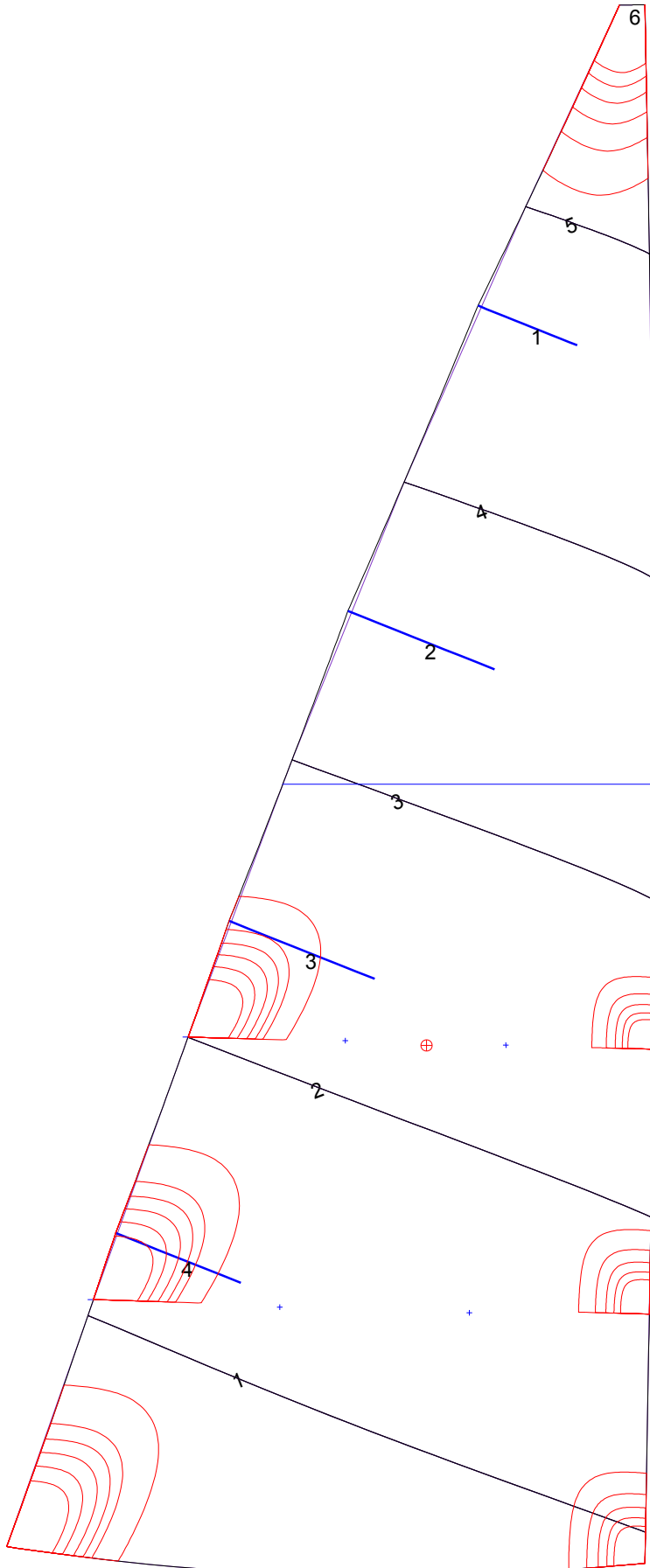
		Fanned Luff (@ 5.00% [0. Before BSeam	
22.329Ft,	0.000Ft	100% (22.330Ft) :	0.000Ft 0.000Ft
16.747Ft,	-0.093Ft	90% (20.097Ft) :	0.030Ft 0.082Ft
11.165Ft,	-0.124Ft	80% (17.864Ft) :	0.059Ft 0.162Ft
5.582Ft,	-0.093Ft	70% (15.631Ft) :	0.080Ft 0.232Ft
0.000Ft,	0.000Ft	60% (13.398Ft) :	0.091Ft 0.281Ft
		50% (11.165Ft) :	0.094Ft 0.303Ft
		40% (8.932Ft) :	0.088Ft 0.301Ft
		30% (6.699Ft) :	0.075Ft 0.276Ft
		20% (4.466Ft) :	0.053Ft 0.218Ft
		10% (2.233Ft) :	0.024Ft 0.116Ft
		0% (0.000Ft) :	0.000Ft 0.000Ft

Mainsail: 3000705 Colin mainsail R1

Seam Allowances			
Zone: 1	Split	Radial	Cross
	0.000Ft	0.000Ft	0.049Ft

Edge Excesses			
Sail:	Luff	Leech	Foot
	0.000Ft	0.000Ft	0.000Ft

Materials		
Material	Area (Ft ²)	Panels
Material 1	119.33	1,2,3,4,5 6



Mainsail: 3000705 Colin mainsail R1

