

# Mainsail: 3000701Ken-1 Mainsail R0

Design Info  
=====

Design File:  
E:\Dropbox\Dropbox\Mike computer\Fareast Sails Production\2019\3000701Ken-1-2\3000701Ken-1 Mainsail R0.des

Initial Design Date: 10/7/2019  
Boat:

Comments:  
tack angle 88.5

Client:

Design Data  
=====

## Main

### Measurements

|                            |            |
|----------------------------|------------|
| Luff geodesic:             | 39.101Ft   |
| Leech geodesic:            | 40.751Ft   |
| Foot geodesic:             | 12.621Ft   |
| Head geodesic:             | 0.377Ft    |
| Upper width (MUW):         | 2.270Ft    |
| Three-quarter width (MTW): | 4.164Ft    |
| Half width (MHW):          | 7.537Ft    |
| Quarter width (MQW):       | 10.378Ft   |
| Foot median:               | 39.688Ft   |
| ORC Mainsail area:         | 279.341Ft? |
| Surface area:              | 282.336Ft? |

### Battens

| Position | Length  | Roach   | Angle   | Full |
|----------|---------|---------|---------|------|
| 80.000%  | 3.521Ft | 0.427Ft | 73.980? | Full |
| 60.000%  | 6.364Ft | 0.589Ft | 73.980? | Full |
| 40.000%  | 3.773Ft | 0.489Ft | 73.980? |      |
| 20.000%  | 3.281Ft | 0.280Ft | 73.980? |      |

### Reefing Points

1, Luff: 5.277Ft ; Leech: 5.474Ft ; Offset: 0.000Ft ; Number Eyelets: 2  
 2, Luff: 11.140Ft ; Leech: 11.546Ft ; Offset: 0.000Ft ; Number Eyelets: 2  
 3, Luff: 17.004Ft ; Leech: 17.616Ft ; Offset: 0.000Ft ; Number Eyelets: 2

### Luff Curve

|           |          | Fanned Luff (@ 5.00% [0. Before BSeam |                 |
|-----------|----------|---------------------------------------|-----------------|
| 39.099Ft, | 0.000Ft  | 100% (39.101Ft) :                     | 0.000Ft 0.000Ft |
| 29.324Ft, | -0.161Ft | 90% (35.192Ft) :                      | 0.046Ft 0.140Ft |
| 19.550Ft, | -0.215Ft | 80% (31.281Ft) :                      | 0.089Ft 0.276Ft |
| 9.775Ft,  | -0.161Ft | 70% (27.371Ft) :                      | 0.118Ft 0.386Ft |
| 0.000Ft,  | 0.000Ft  | 60% (23.461Ft) :                      | 0.132Ft 0.458Ft |
|           |          | 50% (19.551Ft) :                      | 0.134Ft 0.485Ft |
|           |          | 40% (15.640Ft) :                      | 0.124Ft 0.475Ft |
|           |          | 30% (11.730Ft) :                      | 0.100Ft 0.428Ft |
|           |          | 20% (7.820Ft) :                       | 0.063Ft 0.324Ft |
|           |          | 10% (3.911Ft) :                       | 0.015Ft 0.147Ft |
|           |          | 0% (0.000Ft) :                        | 0.000Ft 0.000Ft |

# Mainsail: 3000701Ken-1 Mainsail R0

## Seam Allowances

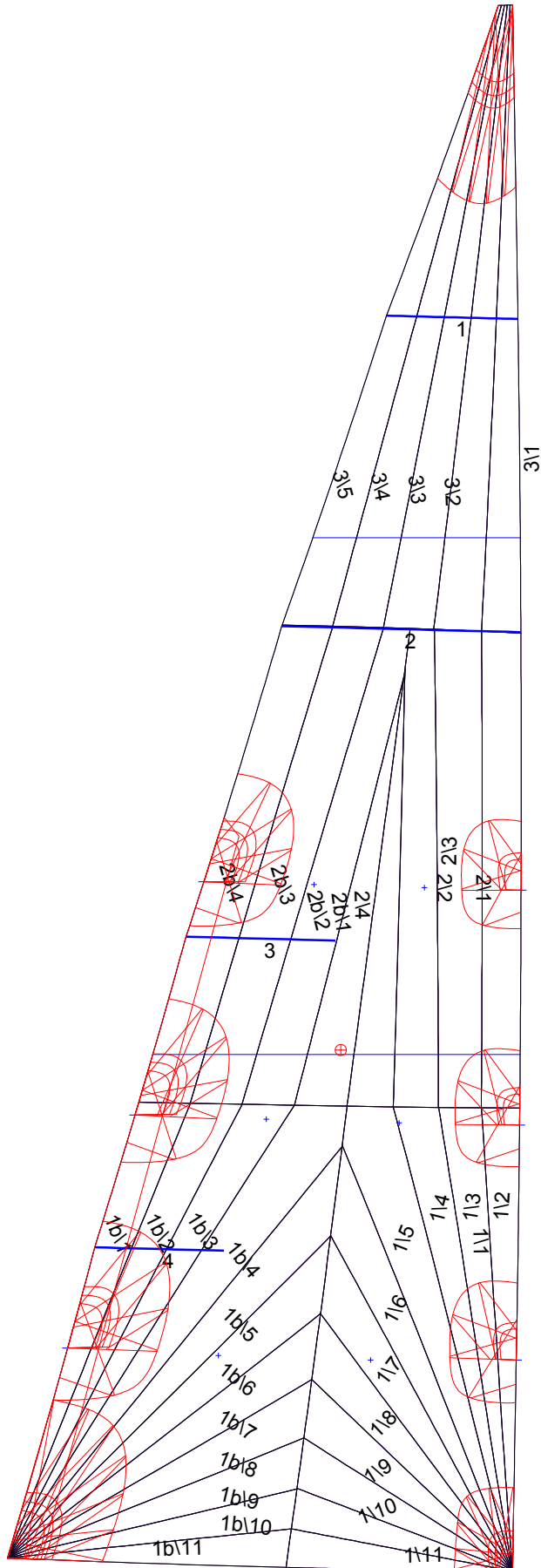
| Zone:     | Split   | Radial  | Cross   |
|-----------|---------|---------|---------|
| Zone: 1/a | 0.082Ft | 0.049Ft | 0.082Ft |
| Zone: 1/b | 0.082Ft | 0.049Ft | 0.082Ft |
| Zone: 2/a | 0.082Ft | 0.049Ft | 0.082Ft |
| Zone: 2/b | 0.082Ft | 0.049Ft | 0.082Ft |
| Zone: 3   | 0.082Ft | 0.049Ft | 0.082Ft |

## Edge Excesses

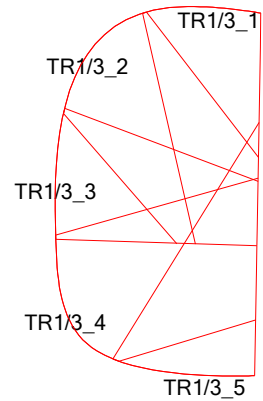
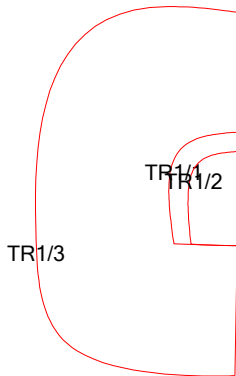
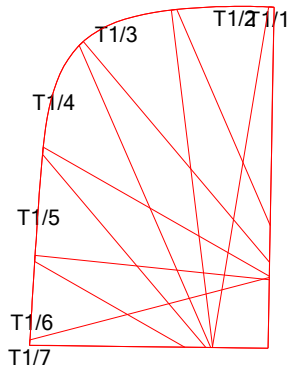
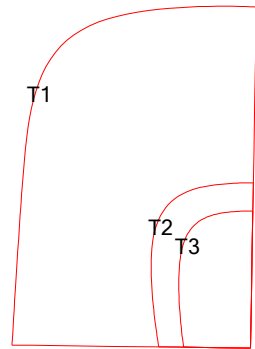
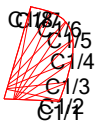
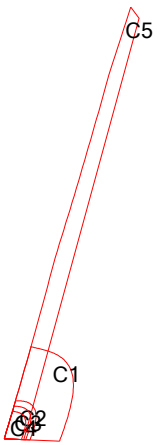
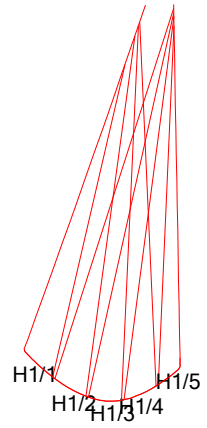
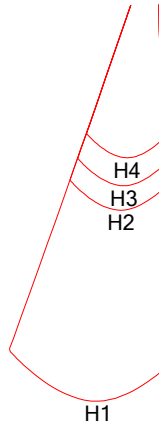
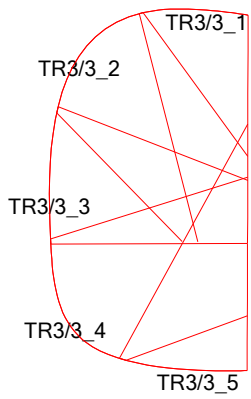
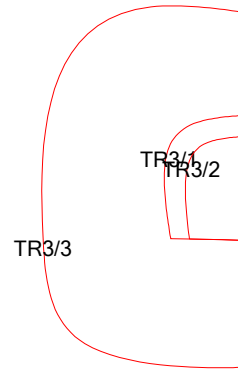
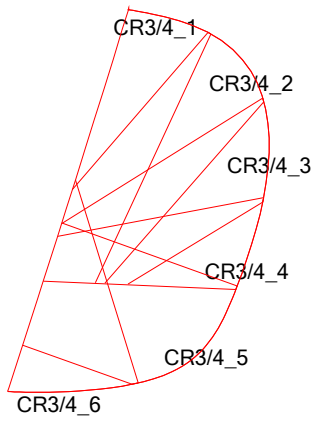
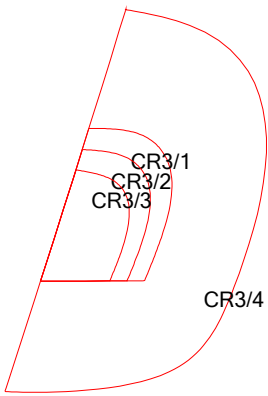
| Sail: | Luff    | Leech   | Foot    |
|-------|---------|---------|---------|
| Sail: | 0.000Ft | 0.000Ft | 0.000Ft |

## Materials

| Material   | Area (Ft <sup>2</sup> ) | Panels   |
|------------|-------------------------|--|
| Material 1 | 282.80                  | 1\1,1\2,1\3,1\4,1\5<br>1\6,1\7,1\8,1\9,1\10<br>1\11,1b\1,1b\2,1b\3,1b\4<br>1b\5,1b\6,1b\7,1b\8,1b\9<br>1b\10,1b\11,2\1,2\2,2\3<br>2\4,2b\1,2b\2,2b\3,2b\4<br>3\1,3\2,3\3,3\4,3\5 |



# Mainsail: 3000701Ken-1 Mainsail R0



# Mainsail: 3000701Ken-1 Mainsail R0

