

Mainsail: 3000310 Dan-1 main R1

Design Info
=====

Design File:
E:\Dropbox\Mike computer\Fareast Sails Production\2019\3000310 Dan-1-2\3000310 Dan-1 main R1.des

Initial Design Date: 9/3/2019
Boat:

Comments:
tack angle 88.5

Client:

Design Data
=====

Main

Measurements

Luff geodesic:	42.680Ft
Leech geodesic:	44.844Ft
Foot geodesic:	14.541Ft
Head geodesic:	0.377Ft
Upper width (MUW):	3.946Ft
Three-quarter width (MTW):	7.432Ft
Half width (MHW):	11.577Ft
Quarter width (MQW):	13.579Ft
Foot median:	43.379Ft
ORC Mainsail area:	427.492Ft ²
Surface area:	444.344Ft ²

Battens

Position	Length	Roach	Angle	Full
80.000%	7.067Ft	3.175Ft	73.113?	Full
60.000%	10.769Ft	3.712Ft	73.113?	Full
40.000%	12.841Ft	2.996Ft	73.113?	Full
20.000%	13.860Ft	1.587Ft	73.113?	Full

Reefing Points

1, Luff: 6.399Ft ; Leech: 6.474Ft ; Offset: 0.000Ft ; Number Eyelets: 3
2, Luff: 12.798Ft ; Leech: 12.954Ft ; Offset: 0.000Ft ; Number Eyelets: 3

Luff Curve

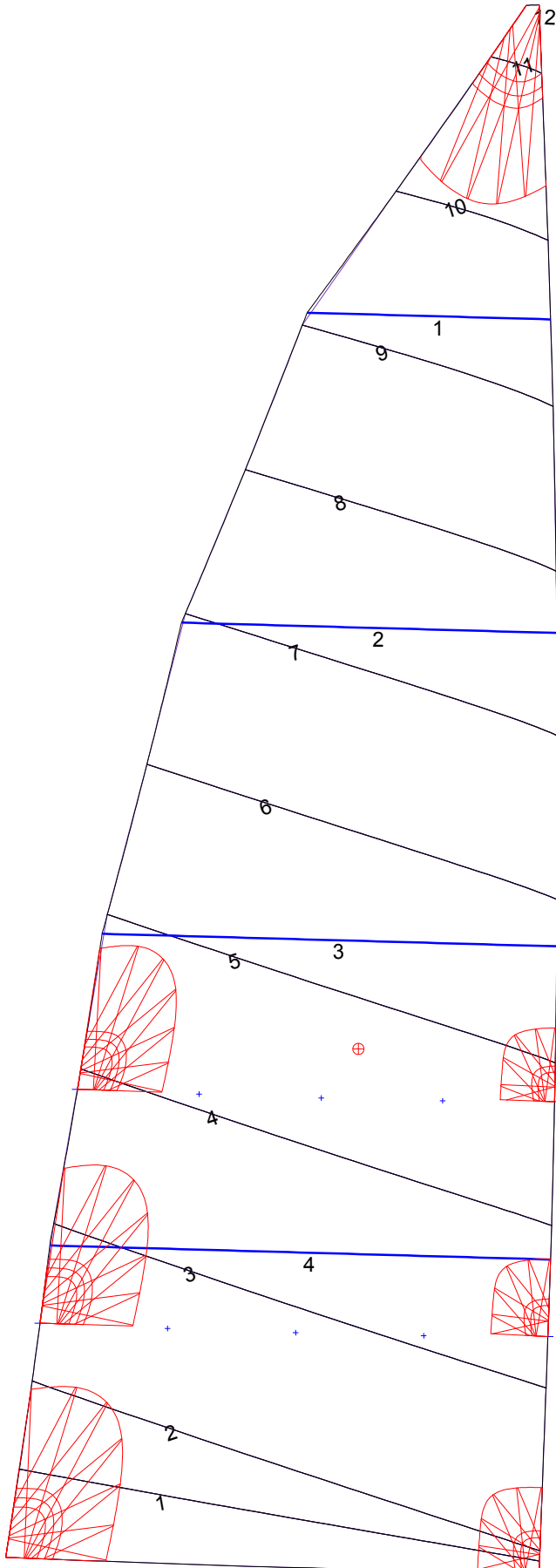
		Fanned Luff (@ 5.00% [0.'Before BSeam	
42.672Ft,	0.000Ft	100% (42.680Ft) :	0.000Ft -0.000Ft
32.004Ft,	-0.375Ft	90% (38.415Ft) :	0.113Ft 0.280Ft
21.336Ft,	-0.500Ft	80% (34.145Ft) :	0.219Ft 0.537Ft
10.668Ft,	-0.375Ft	70% (29.878Ft) :	0.295Ft 0.705Ft
0.000Ft,	0.000Ft	60% (25.609Ft) :	0.337Ft 0.779Ft
		50% (21.340Ft) :	0.348Ft 0.785Ft
		40% (17.072Ft) :	0.329Ft 0.721Ft
		30% (12.803Ft) :	0.282Ft 0.590Ft
		20% (8.535Ft) :	0.200Ft 0.399Ft
		10% (4.269Ft) :	0.090Ft 0.171Ft
		0% (0.000Ft) :	0.000Ft 0.000Ft

Mainsail: 3000310 Dan-1 main R1

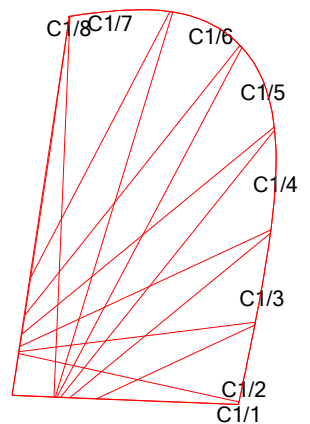
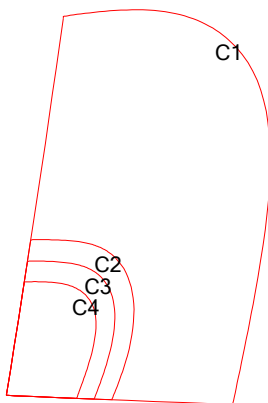
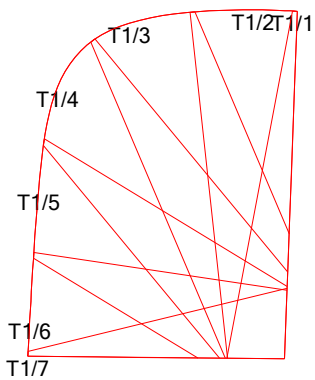
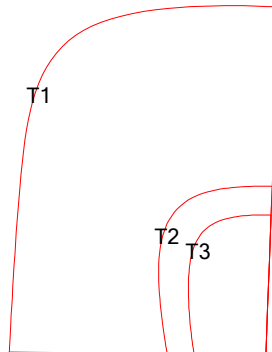
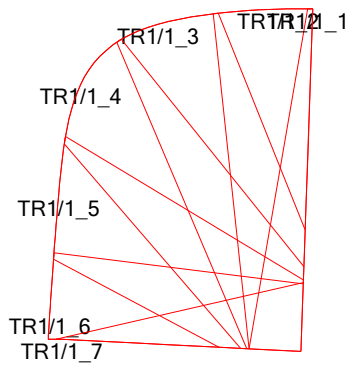
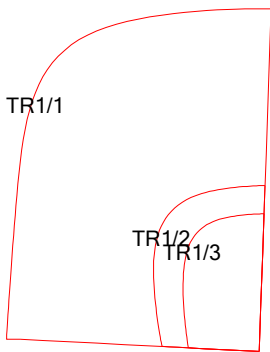
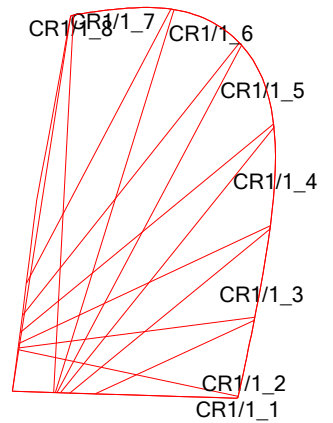
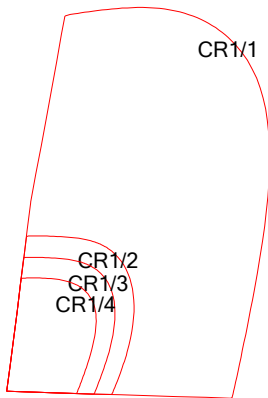
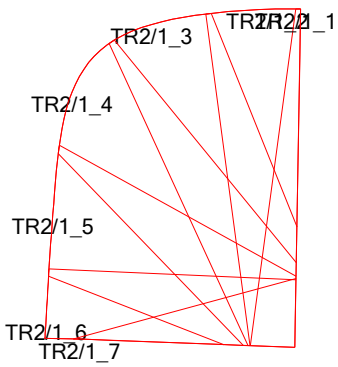
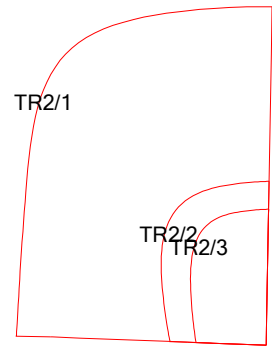
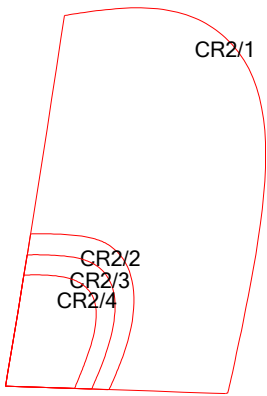
Seam Allowances			
Zone: 1	Split	Radial	Cross
	0.000Ft	0.000Ft	0.098Ft

Edge Excesses			
Sail:	Luff	Leech	Foot
	0.000Ft	0.000Ft	0.000Ft

Materials		
Material	Area (Ft ²)	Panels
Material 1	444.55	1,2,3,4,5 6,7,8,9,10 11,12



Mainsail: 3000310 Dan-1 main R1



Mainsail: 3000310 Dan-1 main R1

