

# Mainsail: 3000219 Scott main R1

Design Info  
=====

Design File:  
E:\Dropbox\Mike computer\Fareast Sails Production\2019\3000219 Scott\3000219 Scott main R1.des

Initial Design Date: 20/2/2019  
Boat:

Comments:

Client:

Design Data  
=====

## Main

### Measurements

Luff geodesic: 18.960Ft  
 Leech geodesic: 20.020Ft  
 Foot geodesic: 11.161Ft  
 Head geodesic: 0.377Ft  
 Upper width (MUW): 1.970Ft  
 Three-quarter width (MTW): 3.727Ft  
 Half width (MHW): 6.801Ft  
 Quarter width (MQW): 9.208Ft  
 Foot median: 18.955Ft  
 ORC Mainsail area: 120.697Ft?  
 Surface area: 123.746Ft?

### Battens

Position	Length	Roach	Angle	Full
75.000%	2.493Ft	0.720Ft	90.000?	
50.000%	2.493Ft	0.836Ft	90.000?	
25.000%	2.493Ft	0.536Ft	90.000?	

### Reefing Points

1, Luff: 2.578Ft ; Leech: 2.683Ft ; Offset: 0.000Ft ; Number Eyelets: 3

### Luff Curve

Luff Curve		Fanned Luff (@ 5.00% [0. Before BSeam		
18.955Ft,	0.000Ft	100% (18.960Ft) :	-0.000Ft	-0.000Ft
17.237Ft,	-0.080Ft	90% (17.069Ft) :	0.056Ft	0.126Ft
14.217Ft,	-0.188Ft	80% (15.167Ft) :	0.111Ft	0.252Ft
9.478Ft,	-0.266Ft	70% (13.274Ft) :	0.151Ft	0.361Ft
4.739Ft,	-0.188Ft	60% (11.376Ft) :	0.176Ft	0.433Ft
1.592Ft,	-0.071Ft	50% (9.480Ft) :	0.184Ft	0.454Ft
0.000Ft,	0.000Ft	40% (7.584Ft) :	0.170Ft	0.419Ft
		30% (5.688Ft) :	0.137Ft	0.340Ft
		20% (3.790Ft) :	0.092Ft	0.226Ft
		10% (1.900Ft) :	0.041Ft	0.098Ft
		0% (0.000Ft) :	0.000Ft	0.000Ft

# Mainsail: 3000219 Scott main R1

## Seam Allowances

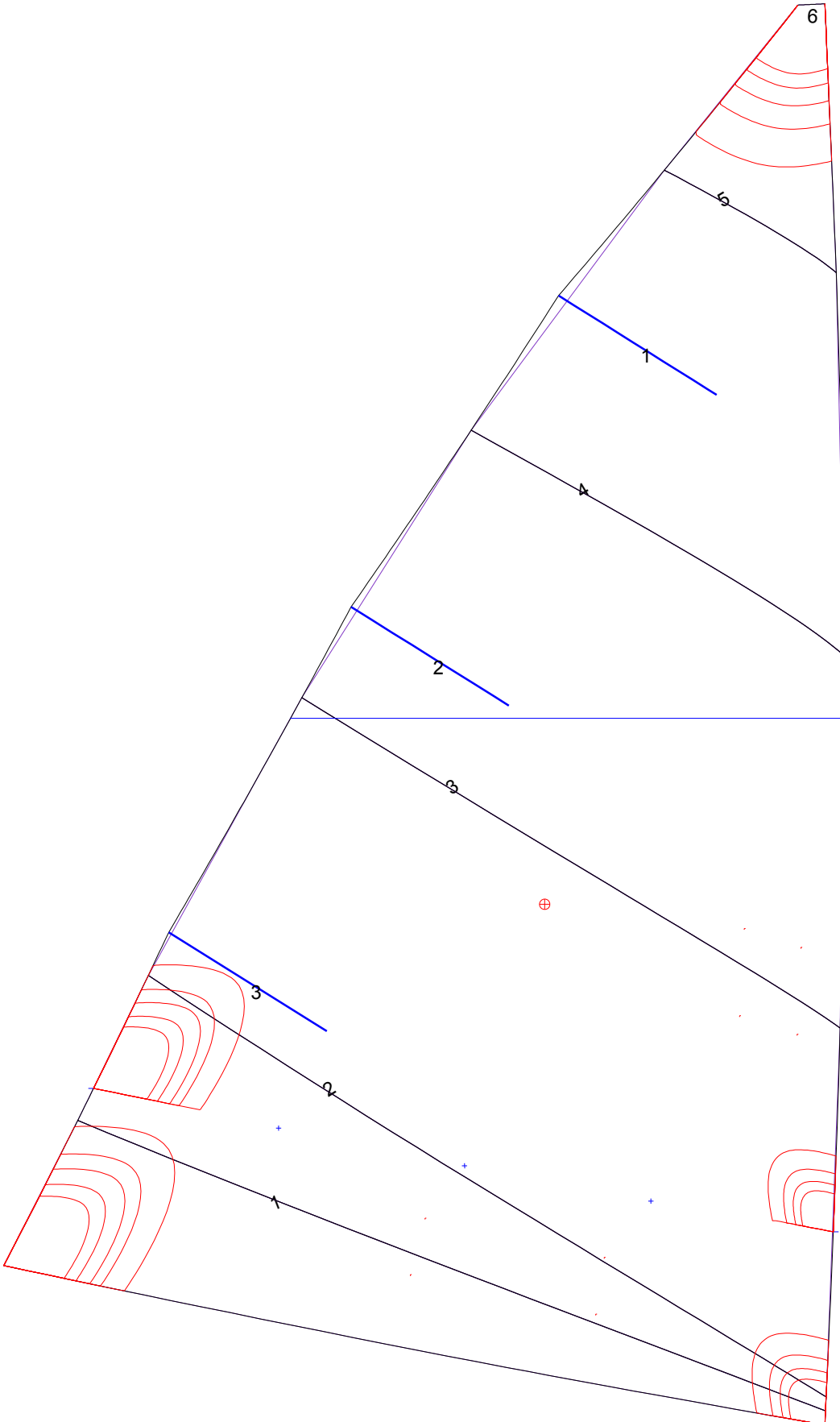
Zone: 1	Split	Radial	Cross
	0.000Ft	0.000Ft	0.049Ft

## Edge Excesses

Sail:	Luff	Leech	Foot
	0.000Ft	0.000Ft	0.000Ft

## Materials

Material	Area (Ft <sup>2</sup> )	Panels
Material 1	123.21	1,2,3,4,5 6



# Mainsail: 3000219 Scott main R1

