

Genoa: 8000518 Paul-2 Nautica 330 HeadsailV1.des

Design Info

=====

Design File:

\\NAS\Engineering files\Queenie-Customer Order\Fareast Sails\2024 Orders\Need to be Confirmed\8000518 Paul Nau

Initial Design Date: 28/8/2024

Boat:

Nautica 330

Client:

Comments:

Design Data

=====

Genoa

Measurements

Luff geodesic:	12.230m
Leech geodesic:	11.827m
Foot geodesic:	4.950m
Headboard width:	0.045m
Luff perpendicular (HLP):	4.764m
Upper width (HUW):	0.519m
Three-quarter width (HTW):	1.030m
Half width (HHW):	2.188m
Quarter width (HQW):	3.445m
Foot median:	11.913m
ORC Headsail area:	27.845m?
IRC Headsail area:	27.756m?
Surface area:	27.922m?
Forestay height:	13.160m
J:	3.300m

Draft Stripes

1, Luff: 3.070m ; Leech: 2.809m ;
2, Luff: 6.133m ; Leech: 5.822m ;
3, Luff: 9.187m ; Leech: 8.802m ;

Luff Curve

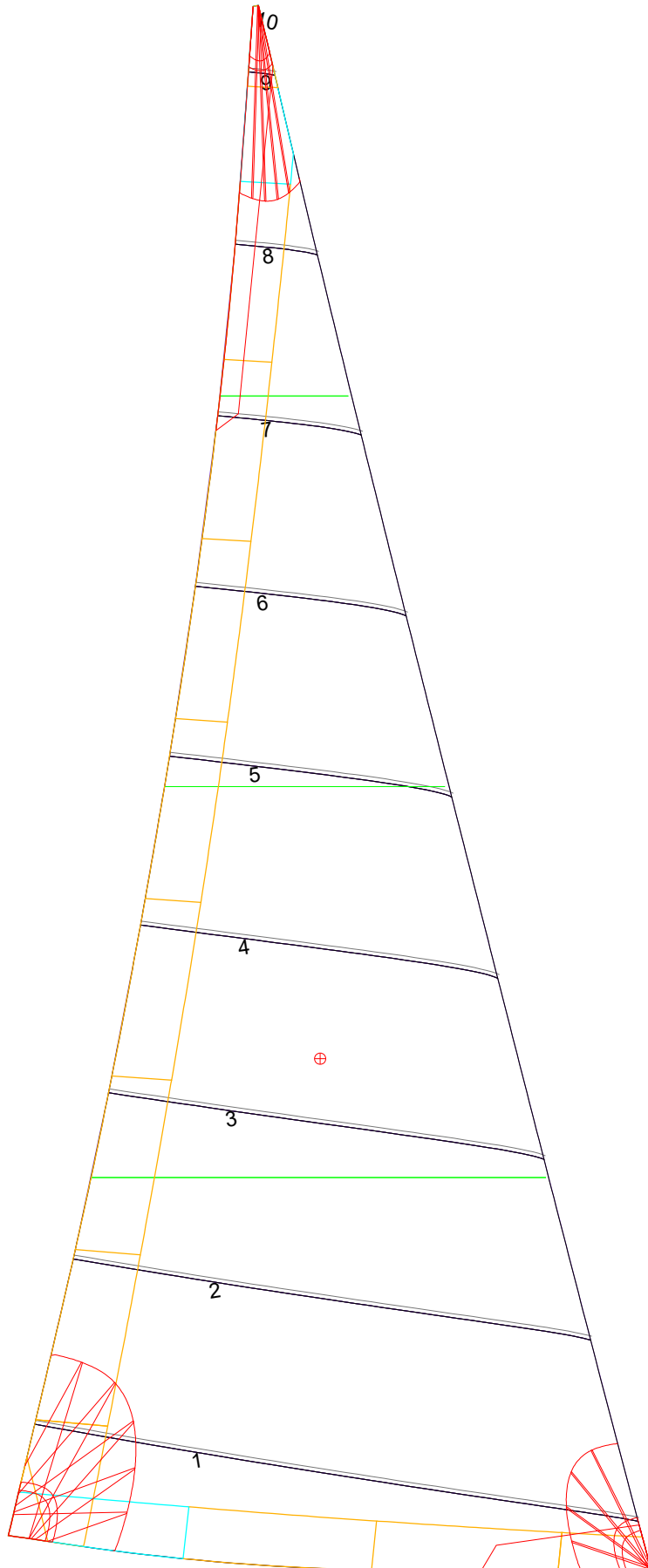
12.229m,	0.000m
9.777m,	0.052m
7.326m,	0.072m
4.880m,	0.065m
2.438m,	0.041m
0.000m,	0.000m

Fanned Luff (@ 5.00% [0.244m])

100% (12.229m) :	-0.000m	-0.000m
90% (11.005m) :	-0.028m	-0.003m
80% (9.784m) :	-0.052m	-0.003m
70% (8.560m) :	-0.066m	0.006m
60% (7.338m) :	-0.071m	0.019m
50% (6.114m) :	-0.070m	0.030m
40% (4.892m) :	-0.065m	0.038m
30% (3.668m) :	-0.056m	0.039m
20% (2.446m) :	-0.043m	0.031m
10% (1.222m) :	-0.023m	0.016m
0% (0.000m) :	0.000m	0.000m

Before BSeam

Genoa: 8000518 Paul-2 Nautica 330 HeadsailV1.des



Seam Allowances

Zone:	Split	Radial	Cross
Zone: 1	0.030m	0.030m	0.030m
Cover 1	0.025m	0.025m	0.025m
Cover 2	0.025m	0.025m	0.025m
Cover 3	0.000m	0.000m	0.000m
Cover 4	0.000m	0.000m	0.000m

Edge Excesses

Sail:	Luff	Leech	Foot
Sail:	0.000m	0.000m	0.000m
Cover 0	0.070m	0.100m	0.070m
Cover 1	0.070m	0.070m	0.100m
Cover 2	0.000m	0.070m	0.070m
Cover 3	0.000m	0.070m	0.070m

Total Seam Lengths (m)

Horizontal	21.22
Radial/Vertical	0.00
Bi-Radial Split	0.00

Materials

Material	Area (m ²)	Panels
Material 1	27.98	1,2,3,4,5 6,7,8,9,10