

Mainsail: 6000113 Hunter 49 Main-Thomas-v2

Design Info

=====

Initial Design Date: 12/2/2022
Boat:

Client:

Design File:

E:\dropbox\Dropbox\Fareast Sails\2022 Order\6000113 Thomas\6000113 Hunter 49 Main-Thomas-v2.des

Comments:

Design Data

=====

Main

Measurements

Luff geodesic:	15.060m
Leech geodesic:	16.000m
Foot geodesic:	6.913m
Head geodesic:	0.050m
Upper width (MUW):	0.861m
Three-quarter width (MTW):	1.710m
Half width (MHW):	3.497m
Quarter width (MQW):	5.240m
Foot median:	15.245m
ORC Mainsail area:	52.402m?
Surface area:	52.350m?
Clew height:	0.292m
Mast rake:	0.841m

Luff Curve

15.060m,	0.000m
11.295m,	-0.034m
7.530m,	-0.045m
3.765m,	-0.034m
0.000m,	0.000m

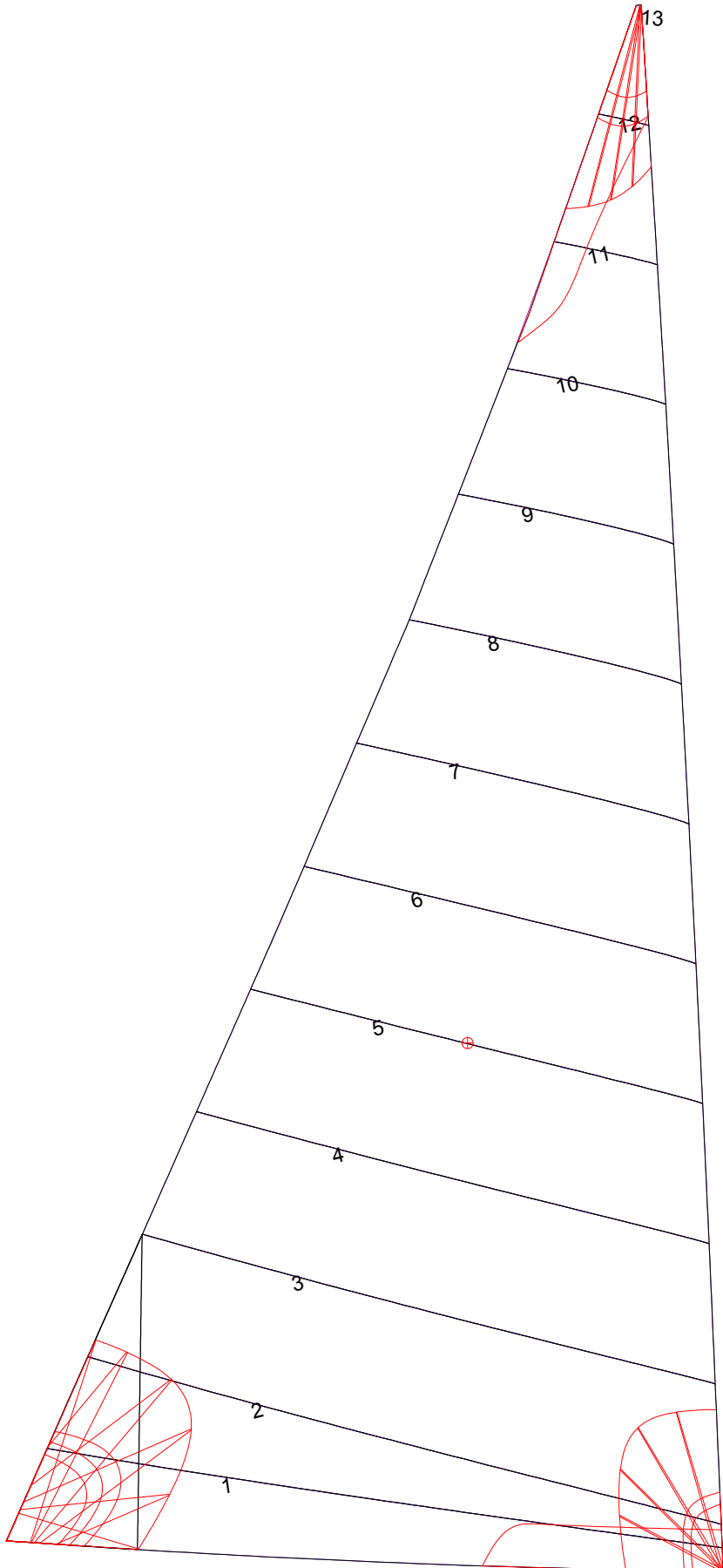
Fanned Luff (@ 5.00% [0.344m])

100% (15.060m) :	0.000m
90% (13.554m) :	0.010m
80% (12.048m) :	0.020m
70% (10.542m) :	0.029m
60% (9.036m) :	0.033m
50% (7.530m) :	0.034m
40% (6.024m) :	0.032m
30% (4.518m) :	0.026m
20% (3.012m) :	0.018m
10% (1.506m) :	0.008m
0% (0.000m) :	0.000m

Before BSeam

0.000m
0.039m
0.078m
0.116m
0.146m
0.156m
0.148m
0.124m
0.087m
0.040m
0.000m

Mainsail: 6000113 Hunter 49 Main-Thomas-v2



Seam Allowances			
	Split	Radial	Cross
Zone: 1	0.000m	0.000m	0.035m
Cover 1	0.000m	0.000m	0.000m

Edge Excesses			
	Luff	Leech	Foot
Sail:	0.000m	0.000m	0.000m
Cover 0	0.000m	0.000m	0.000m

Total Seam Lengths (m)

Horizontal	44.40
Radial/Vertical	0.00
Bi-Radial Split	0.00

Materials

Material	Area (m ²)	Panels
Material 1	52.45	1,2,3,4,5 6,7,8,9,10 11,12,13