

Mainsail: 6000113 Hunter 49 Main-Thomas.des

Design Info

=====

Initial Design Date: 12/2/2022
Boat:

Client:

Design File:

E:\Dropbox\Fareast Sails\2022 Order\6000113 Thomas\6000113 Hunter 49 Main-Thomas.des

Comments:

Design Data

=====

Main

Measurements

Luff geodesic:	15.917m
Leech geodesic:	16.000m
Foot geodesic:	6.913m
Head geodesic:	0.050m
Upper width (MUW):	0.841m
Three-quarter width (MTW):	1.670m
Half width (MHW):	3.429m
Quarter width (MQW):	5.158m
Foot median:	15.676m
ORC Mainsail area:	54.631m?
Surface area:	54.357m?
Clew height:	1.097m
Mast rake:	0.841m

Luff Curve

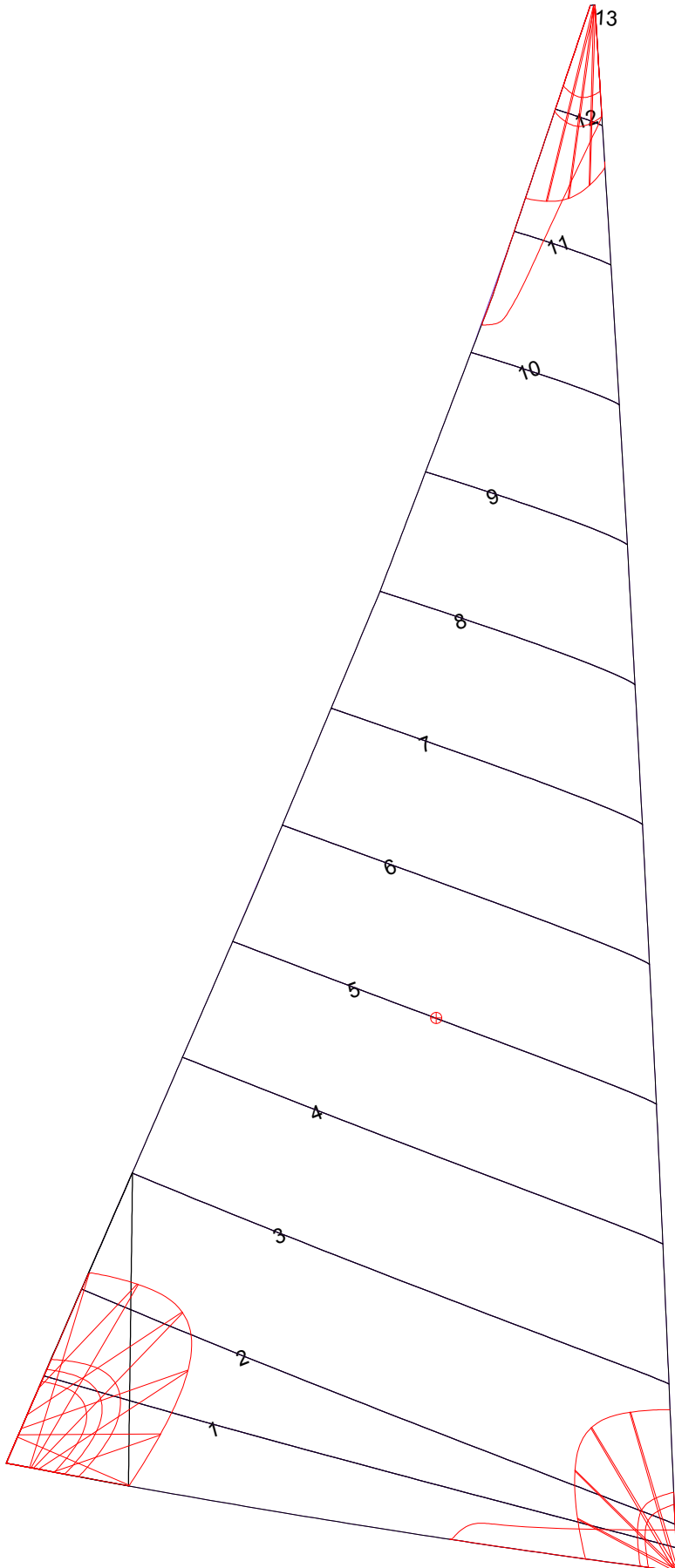
15.917m,	0.000m
11.938m,	-0.034m
7.959m,	-0.045m
3.979m,	-0.034m
0.000m,	0.000m

Fanned Luff (@ 5.00% [0.340m])

100% (15.917m) :	0.000m	-0.000m
90% (14.326m) :	0.009m	0.039m
80% (12.733m) :	0.019m	0.078m
70% (11.142m) :	0.027m	0.117m
60% (9.550m) :	0.031m	0.147m
50% (7.958m) :	0.032m	0.158m
40% (6.367m) :	0.029m	0.149m
30% (4.775m) :	0.025m	0.126m
20% (3.183m) :	0.017m	0.088m
10% (1.593m) :	0.007m	0.041m
0% (0.000m) :	0.000m	0.000m

Before BSeam

Mainsail: 6000113 Hunter 49 Main-Thomas.des



Seam Allowances			
	Split	Radial	Cross
Zone: 1	0.000m	0.000m	0.035m
Cover 1	0.000m	0.000m	0.000m

Edge Excesses			
	Luff	Leech	Foot
Sail:	0.000m	0.000m	0.000m
Cover 0	0.000m	0.000m	0.000m

Total Seam Lengths (m)

Horizontal	45.45
Radial/Vertical	0.00
Bi-Radial Split	0.00

Materials

Material	Area (m ²)	Panels
Material 1	54.47	1,2,3,4,5 6,7,8,9,10 11,12,13