

# Mainsail: 6000111 Charles-1 Main-v2

Design Info  
=====

Design File:  
E:\dropbox\Dropbox\Fareast Sails\2022 Order\6000111 Charles\6000111 Charles-1 Main-v2.des

Initial Design Date: 18/1/2022  
Boat:

Comments:

Client:

Design Data  
=====

## Main

### Measurements

Luff geodesic: 34.400Ft  
 Leech geodesic: 35.722Ft  
 Foot geodesic: 10.719Ft  
 Head geodesic: 0.377Ft  
 Upper width (MUW): 1.892Ft  
 Three-quarter width (MTW): 3.427Ft  
 Half width (MHW): 6.235Ft  
 Quarter width (MQW): 8.603Ft  
 Foot median: 34.824Ft  
 ORC Mainsail area: 204.745Ft?  
 Surface area: 206.596Ft?  
 Clew height: 0.328Ft  
 Mast rake: 0.000Ft

### Battens

Position	Length	Roach	Angle	Luff	Leech	Full
80.000%	2.892Ft	0.290Ft	73.387?	27.563Ft	28.511Ft	Full
60.000%	5.240Ft	0.394Ft	73.387?	20.733Ft	21.383Ft	Full
40.000%	7.265Ft	0.328Ft	73.387?	13.902Ft	14.255Ft	Full
20.000%	9.059Ft	0.180Ft	73.387?	7.072Ft	7.128Ft	Full

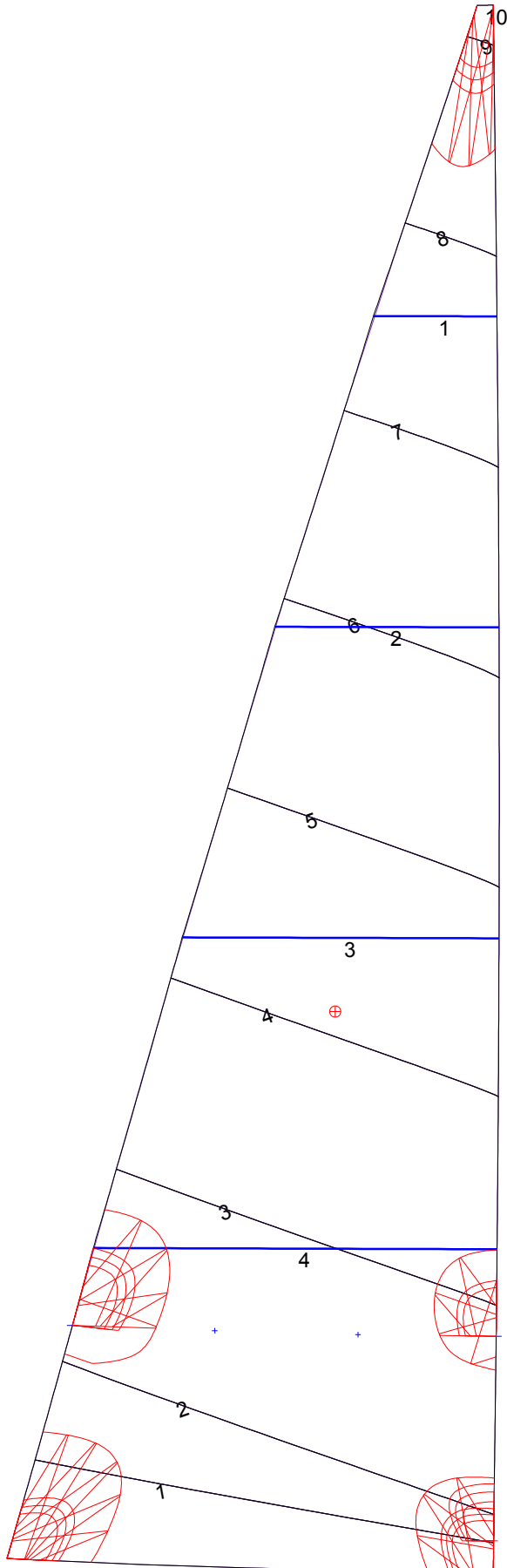
### Reefing Points

1, Luff: 5.159Ft ; Leech: 5.342Ft ; Offset: 0.000Ft ; Number Eyelets: 2

### Luff Curve

		Fanned Luff (@ 5.00% [0.534Ft])	Before BSeam
34.399Ft,	0.000Ft	100% (34.399Ft) :	0.000Ft 0.000Ft
25.799Ft,	-0.098Ft	90% (30.960Ft) :	0.030Ft 0.087Ft
17.198Ft,	-0.131Ft	80% (27.519Ft) :	0.060Ft 0.174Ft
8.600Ft,	-0.098Ft	70% (24.080Ft) :	0.082Ft 0.253Ft
0.000Ft,	0.000Ft	60% (20.640Ft) :	0.094Ft 0.306Ft
		50% (17.200Ft) :	0.095Ft 0.318Ft
		40% (13.760Ft) :	0.089Ft 0.294Ft
		30% (10.320Ft) :	0.076Ft 0.243Ft
		20% (6.880Ft) :	0.055Ft 0.170Ft
		10% (3.440Ft) :	0.025Ft 0.079Ft
		0% (0.000Ft) :	0.000Ft 0.000Ft

# Mainsail: 6000111 Charles-1 Main-v2



Seam Allowances			
Zone: 1	Split	Radial	Cross
	0.000Ft	0.000Ft	0.082Ft

Edge Excesses			
Sail:	Luff	Leech	Foot
	0.000Ft	0.000Ft	0.000Ft

Total Seam Lengths (Ft)

Horizontal	56.10
Radial/Vertical	0.00
Bi-Radial Split	0.00

Materials

Material	Area (Ft <sup>2</sup> )	Panels
Material 1	206.74	1,2,3,4,5 6,7,8,9,10