

# Mainsail: 6000110 Bavaria 37 Main-Geoff.des

Design Info  
=====

Design File:  
E:\Dropbox\Fareast Sails\2022 Order\6000110 Geoff\6000110 Bavaria 37 Main-Geoff.des

Initial Design Date: 18/1/2022  
Boat:

Comments:

Client:

Design Data  
=====

Main

## Measurements

Luff geodesic:	13.167m
Leech geodesic:	13.661m
Foot geodesic:	3.969m
Head geodesic:	0.115m
Upper width (MUW):	0.815m
Three-quarter width (MTW):	1.501m
Half width (MHW):	2.612m
Quarter width (MQW):	3.400m
Foot median:	13.380m
ORC Mainsail area:	31.463m <sup>2</sup>
Surface area:	32.206m <sup>2</sup>
Clew height:	0.100m
Mast rake:	0.000m

## Battens

Position	Length	Roach	Angle	Luff	Leech	Full
80.000%	1.303m	0.335m	75.109?	10.529m	10.891m	Full
60.000%	2.274m	0.454m	75.109?	7.896m	8.169m	Full
40.000%	2.996m	0.402m	75.109?	5.263m	5.446m	Full
20.000%	3.546m	0.244m	75.109?	2.631m	2.723m	Full

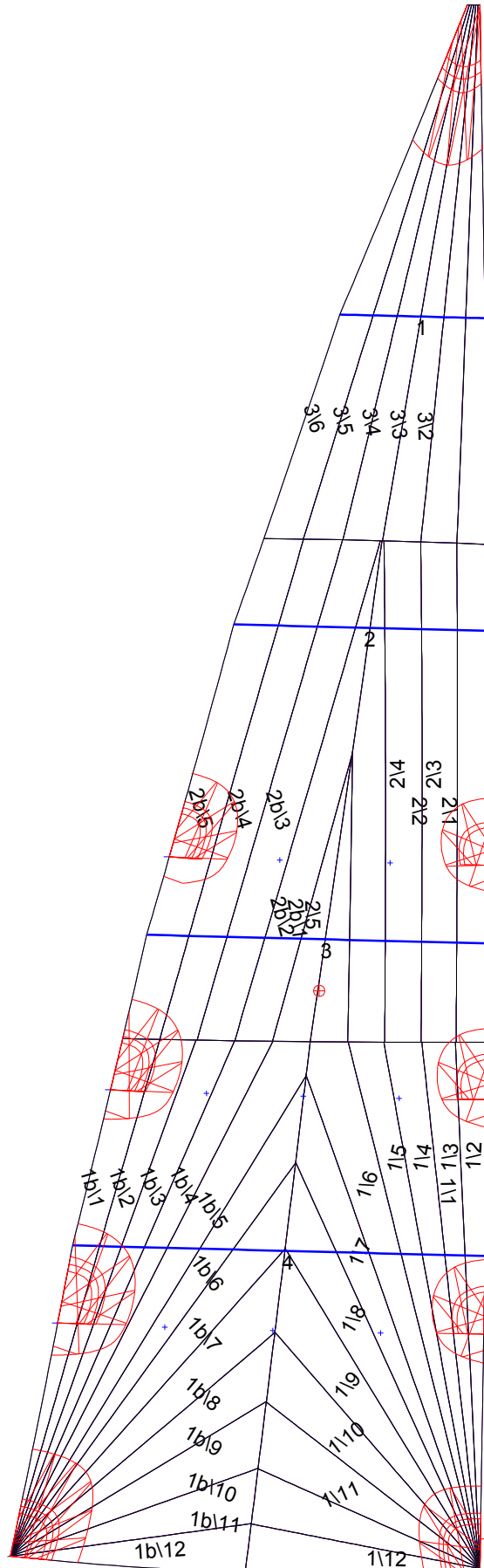
## Reefing Points

1, Luff: 1.974m ; Leech: 2.013m ; Offset: 0.000m ; Number Eyelets: 3  
2, Luff: 3.949m ; Leech: 4.032m ; Offset: 0.000m ; Number Eyelets: 3  
3, Luff: 5.924m ; Leech: 6.055m ; Offset: 0.000m ; Number Eyelets: 2

## Luff Curve

		Fanned Luff (@ 5.00% [0.198m])	Before BSeam
13.166m,	0.000m	100% (13.167m) :	0.000m
9.875m,	-0.049m	90% (11.850m) :	0.041m
6.583m,	-0.066m	80% (10.533m) :	0.082m
3.292m,	-0.049m	70% (9.217m) :	0.117m
0.000m,	0.000m	60% (7.900m) :	0.140m
		50% (6.583m) :	0.143m
		40% (5.267m) :	0.130m
		30% (3.950m) :	0.108m
		20% (2.633m) :	0.073m
		10% (1.317m) :	0.034m
		0% (0.000m) :	0.000m

# Mainsail: 6000110 Bavaria 37 Main-Geoff.des



## Seam Allowances

Zone:	Split	Radial	Cross
Zone: 1/a	0.038m	0.015m	0.038m
Zone: 1/b	0.038m	0.015m	0.038m
Zone: 2/a	0.038m	0.015m	0.038m
Zone: 2/b	0.038m	0.015m	0.038m
Zone: 3	0.038m	0.015m	0.038m

## Edge Excesses

Sail:	Luff	Leech	Foot
Sail:	0.000m	0.000m	0.000m

## Total Seam Lengths (m)

Horizontal	5.19
Radial/Vertical	133.78
Bi-Radial Split	9.13

## Materials

Material	Area (m <sup>2</sup> )	Panels
Material 1	32.25	1\1,1\2,1\3,1\4,1\5 1\6,1\7,1\8,1\9,1\10 1\11,1\12,1b\1,1b\2,1b\3 1b\4,1b\5,1b\6,1b\7,1b\8 1b\9,1b\10,1b\11,1b\12,2\1 2\2,2\3,2\4,2\5,2b\1 2b\2,2b\3,2b\4,2b\5,3\1 3\2,3\3,3\4,3\5,3\6