

# Asymmetric: 6000108 Keit code zero wiith string fiber

Design Info  
=====

Initial Design Date: 15/1/2022  
Boat:  
Client:

Design File:  
D:\Dropbox\Fareast Sails\2022 Order\6000108 Keith\6000108 Keit code zero wiith string fiber.des

Comments:  
Carbon/technora w/ DP Lite Skin - Grey  
8mm Built in Torsion Cable for bottom up furling  
3 Windows for Telltails  
Draft Stripes (Black)  
UV Cover – (Starboard Side) (Graphite Color) - weathermax  
  
??  
Luff = 350 Inches (thimble to thimble)  
Leech = 300 Inches  
Foot =? 175 Inches

Design Data  
=====

Asymmetric

Measurements

Luff length (SLU):	8.890m	
Leech length (SLE):	7.620m	
Foot length (SFL):	4.445m	
Headboard Width:	0.030m	
Three-quarter width:	1.778m	Closest Pt: 1.504m
Half width (SHW):	3.091m	Closest Pt: 2.704m
Quarter width:	3.871m	Closest Pt: 3.455m
ORC Area:	23.127m?	
IRC Area:	23.035m?	
Surface Area:	21.927m?	
Hoist height:	13.000m	
Pole Length:	0.000m	

Luff Curve

15.500m,	0.000m
11.625m,	0.000m
7.750m,	0.000m
3.875m,	0.000m
0.000m,	0.000m

Fanned Luff (@ 5.00% [0.216m])	Before BSeam
100% (8.855m) :	0.000m -0.000m
89% (7.873m) :	-0.121m 0.085m
78% (6.918m) :	-0.235m 0.167m
68% (6.004m) :	-0.321m 0.235m
58% (5.115m) :	-0.359m 0.277m
48% (4.239m) :	-0.349m 0.288m
38% (3.379m) :	-0.318m 0.262m
29% (2.527m) :	-0.263m 0.219m
19% (1.681m) :	-0.185m 0.159m
9% (0.839m) :	-0.094m 0.082m
0% (0.000m) :	0.000m 0.000m

# Asymmetric: 6000108 Keit code zero wiith string fiber

Seam Allowances			
Zone: 1	Split	Radial	Cross
	0.035m	0.015m	0.035m

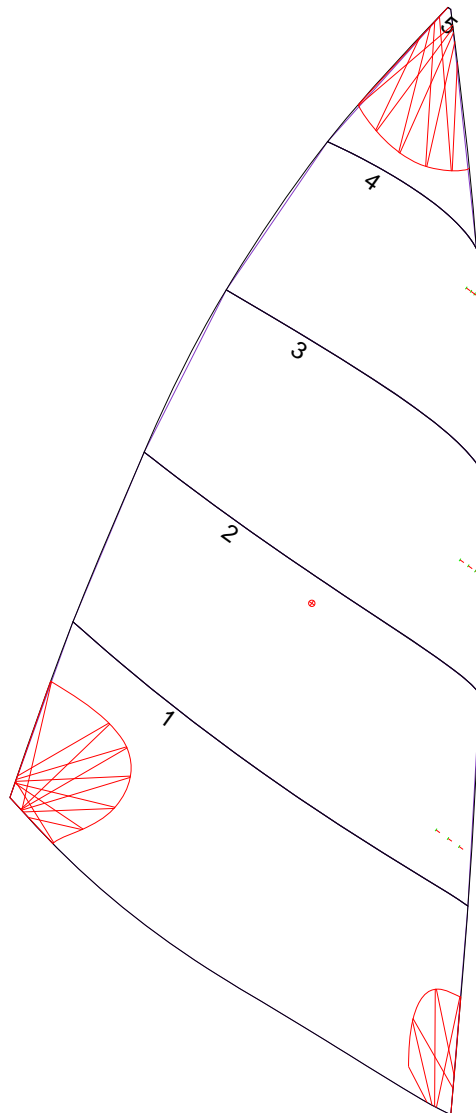
Edge Excesses			
Sail:	Luff	Leech	Foot
	0.000m	0.000m	0.000m

### Total Seam Lengths (m)

Horizontal	11.88
Radial/Vertical	0.00
Bi-Radial Split	0.00

### Materials

Material	Area (m <sup>2</sup> )	Panels
Material 1	21.86	1,2,3,4,5



# Asymmetric: 6000108 Keit code zero wiith string fiber

