

Asymmetric: 6000108 Keit code zero wiith string fiber.des

Design Info
=====

Initial Design Date: 15/1/2022
Boat:
Client:

Design File:
D:\dropbox\Dropbox\Fareast Sails\2022 Order\6000108 Keith\6000108 Keit code zero wiith string fiber.des

Design Data
=====

Asymmetric

Measurements

Luff length (SLU): 9.013m
Leech length (SLE): 7.620m
Foot length (SFL): 4.572m
Headboard Width: 0.030m
Three-quarter width: 1.809m
Half width (SHW): 3.123m
Quarter width: 3.908m
ORC Area: 23.666m?
IRC Area: 23.572m?
Surface Area: 22.287m?
Hoist height: 15.000m
Pole Length: 0.000m

Closest Pt: 1.509m
Closest Pt: 2.699m
Closest Pt: 3.439m

Comments:
Carbon/technora w/ DP Lite Skin - Grey
8mm Built in Torsion Cable for bottom up furling
3 Windows for Telltails
Draft Stripes (Black)
UV Cover – (Starboard Side) (Graphite Color) - weathermax

??
Luff = 350 Inches (thimble to thimble)
Leech = 300 Inches
Foot =? 175 Inches

new: 01252022
H2) Luff = 355.25 inches
H3) Leech = 300 inches
H4) Foot = 180 inches

Luff Curve

15.500m, 0.000m
11.625m, 0.000m
7.750m, 0.000m
3.875m, 0.000m
0.000m, 0.000m

Fanned Luff (@ 5.00% [0.222m])		Before BSeam
100% (8.987m) :	0.000m	0.000m
89% (7.990m) :	-0.123m	0.083m
78% (7.020m) :	-0.239m	0.163m
68% (6.092m) :	-0.325m	0.231m
58% (5.189m) :	-0.364m	0.273m
48% (4.300m) :	-0.354m	0.285m
38% (3.426m) :	-0.322m	0.258m
29% (2.562m) :	-0.267m	0.216m
19% (1.704m) :	-0.188m	0.157m
9% (0.851m) :	-0.095m	0.081m
0% (0.000m) :	0.000m	0.000m

Asymmetric: 6000108 Keit code zero wiith string fiber.des

Seam Allowances			
	Split	Radial	Cross
Zone: 1	0.035m	0.015m	0.035m
Cover 1	0.025m	0.025m	0.025m
Cover 2	0.025m	0.025m	0.025m

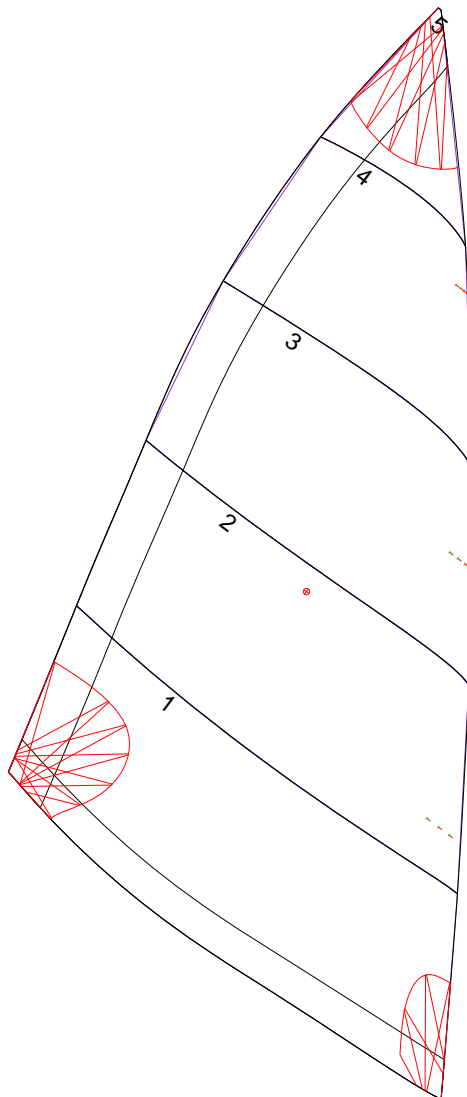
Edge Excesses			
	Luff	Leech	Foot
Sail:	0.000m	0.000m	0.000m
Cover 0	0.050m	0.100m	0.050m
Cover 1	0.050m	0.100m	0.050m

Total Seam Lengths (m)

Horizontal	12.03
Radial/Vertical	0.00
Bi-Radial Split	0.00

Materials

Material	Area (m ²)	Panels
Material 1	22.19	1,2,3,4,5



Asymmetric: 6000108 Keit code zero wiith string fiber.des

