

Mainsail: 6000105 Thomas-V2.des

Design Info
=====

Design File:
E:\Dropbox\Fareast Sails\2022 Order\6000105 Thomas\6000105 Thomas-V2.des

Initial Design Date: 7/1/2022
Boat:

Comments:

Client:

Design Data
=====

Main

Measurements

Luff geodesic:	13.068m
Leech geodesic:	13.869m
Foot geodesic:	4.801m
Head geodesic:	0.115m
Upper width (MUW):	0.982m
Three-quarter width (MTW):	1.843m
Half width (MHW):	3.205m
Quarter width (MQW):	4.109m
Foot median:	13.395m
ORC Mainsail area:	37.952m ²
Surface area:	39.268m ²
Clew height:	0.100m
Mast rake:	0.000m

Battens

Position	Length	Roach	Angle	Luff	Leech	Full
80.000%	1.636m	0.480m	71.210?	10.451m	11.038m	Full
60.000%	2.844m	0.650m	71.210?	7.837m	8.278m	Full
40.000%	1.800m	0.542m	71.210?	5.225m	5.519m	
20.000%	1.800m	0.298m	71.210?	2.612m	2.759m	

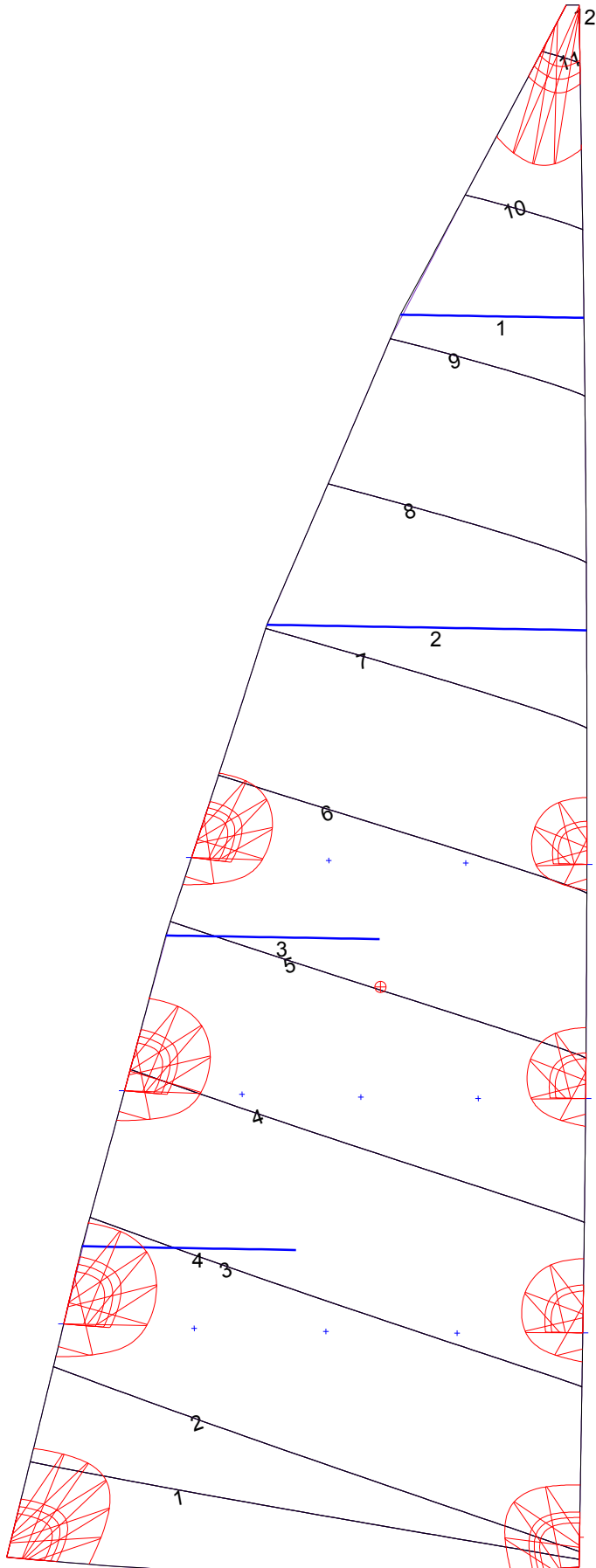
Reefing Points

1, Luff: 1.960m ; Leech: 2.022m ; Offset: 0.000m ; Number Eyelets: 3
2, Luff: 3.920m ; Leech: 4.046m ; Offset: 0.000m ; Number Eyelets: 3
3, Luff: 5.880m ; Leech: 6.077m ; Offset: 0.000m ; Number Eyelets: 2

Luff Curve

		Fanned Luff (@ 5.00% [0.239m])	Before BSeam
13.067m,	0.000m	100% (13.068m) :	0.000m
9.801m,	-0.049m	90% (11.761m) :	0.046m
6.534m,	-0.065m	80% (10.454m) :	0.092m
3.267m,	-0.049m	70% (9.148m) :	0.133m
0.000m,	0.000m	60% (7.841m) :	0.159m
		50% (6.534m) :	0.161m
		40% (5.227m) :	0.145m
		30% (3.920m) :	0.116m
		20% (2.613m) :	0.079m
		10% (1.307m) :	0.036m
		0% (0.000m) :	0.000m

Mainsail: 6000105 Thomas-V2.des



Seam Allowances			
Zone: 1	Split	Radial	Cross
	0.000m	0.000m	0.035m

Edge Excesses			
Sail:	Luff	Leech	Foot
	0.000m	0.000m	0.000m

Total Seam Lengths (m)

Horizontal	33.70
Radial/Vertical	0.00
Bi-Radial Split	0.00

Materials

Material	Area (m ²)	Panels
Material 1	39.30	1,2,3,4,5 6,7,8,9,10 11,12