

Mainsail: 6000105 Thomas.des

Design Info

=====

Design File:

E:\Dropbox\Fareast Sails\2022 Order\6000105 Thomas\6000105 Thomas.des

Initial Design Date: 7/1/2022

Boat:

Comments:

Client:

Design Data

=====

Main

Measurements

Luff geodesic:	13.068m
Leech geodesic:	13.851m
Foot geodesic:	4.801m
Head geodesic:	0.115m
Upper width (MUW):	0.871m
Three-quarter width (MTW):	1.627m
Half width (MHW):	2.929m
Quarter width (MQW):	3.940m
Foot median:	13.388m
ORC Mainsail area:	35.787m?
Surface area:	36.661m?
Clew height:	0.100m
Mast rake:	0.000m

Battens

Position	Length	Roach	Angle	Luff	Leech	Full
80.000%	1.397m	0.258m	71.208?	10.451m	11.038m	Full
60.000%	2.514m	0.350m	71.208?	7.838m	8.278m	Full
40.000%	1.436m	0.292m	71.208?	5.225m	5.519m	
20.000%	1.197m	0.160m	71.208?	2.612m	2.759m	

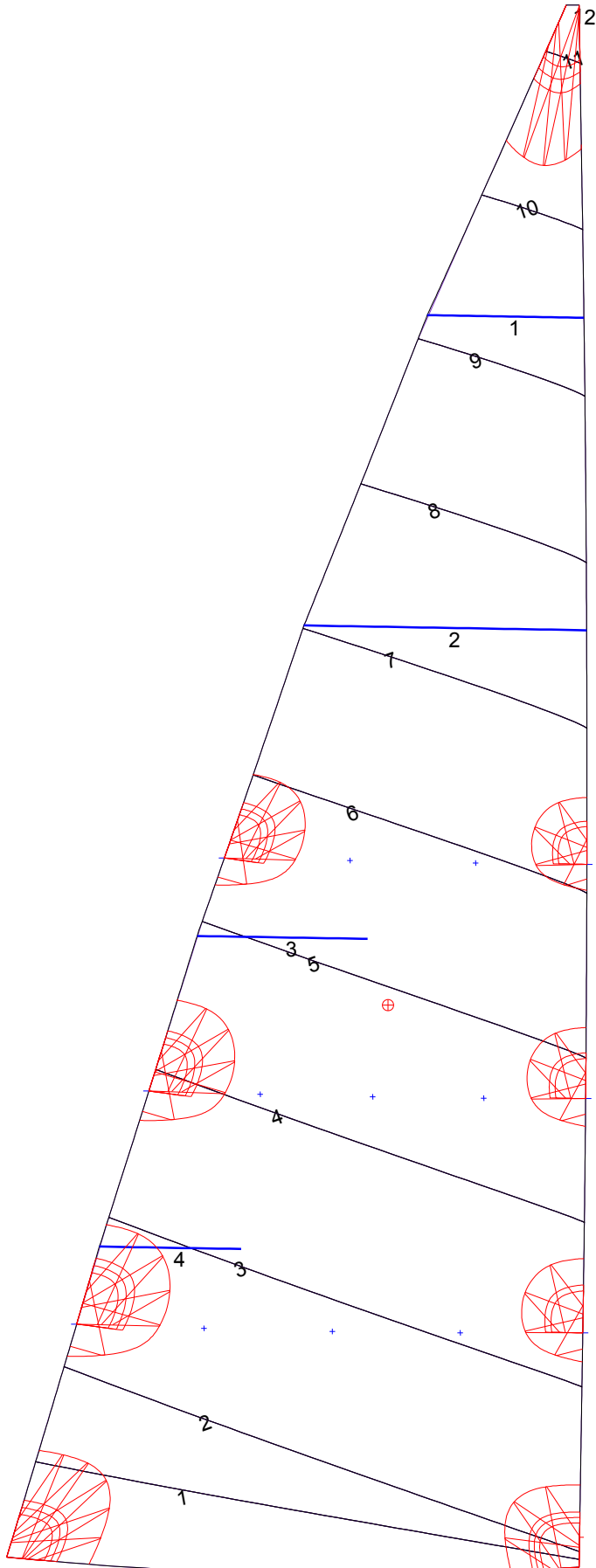
Reefing Points

1, Luff: 1.960m ; Leech: 2.048m ; Offset: 0.000m ; Number Eyelets: 3
2, Luff: 3.920m ; Leech: 4.095m ; Offset: 0.000m ; Number Eyelets: 3
3, Luff: 5.880m ; Leech: 6.144m ; Offset: 0.000m ; Number Eyelets: 2

Luff Curve

		Fanned Luff (@ 5.00% [0.239m])	Before BSeam
13.067m,	0.000m	100% (13.068m) :	0.000m
9.801m,	-0.049m	90% (11.761m) :	0.043m
6.534m,	-0.065m	80% (10.454m) :	0.086m
3.267m,	-0.049m	70% (9.148m) :	0.124m
0.000m,	0.000m	60% (7.841m) :	0.149m
		50% (6.534m) :	0.153m
		40% (5.227m) :	0.140m
		30% (3.920m) :	0.115m
		20% (2.613m) :	0.080m
		10% (1.307m) :	0.037m
		0% (0.000m) :	0.000m

Mainsail: 6000105 Thomas.des



Seam Allowances			
Zone: 1	Split	Radial	Cross
	0.000m	0.000m	0.035m

Edge Excesses			
Sail:	Luff	Leech	Foot
	0.000m	0.000m	0.000m

Total Seam Lengths (m)

Horizontal	31.65
Radial/Vertical	0.00
Bi-Radial Split	0.00

Materials

Material	Area (m ²)	Panels
Material 1	36.71	1,2,3,4,5 6,7,8,9,10 11,12