

Mainsail: 6000104 Albert.des

Design Info
=====

Design File:
E:\Dropbox\Fareast Sails\2022 Order\6000104 Albert\6000104 Albert.des

Initial Design Date: 19/1/2022
Boat:

Comments:

Client:

Design Data
=====

Main

Measurements

Luff geodesic:	10.560m
Leech geodesic:	10.963m
Foot geodesic:	3.245m
Head geodesic:	0.115m
Upper width (MUW):	0.648m
Three-quarter width (MTW):	1.178m
Half width (MHW):	2.064m
Quarter width (MQW):	2.725m
Foot median:	10.735m
ORC Mainsail area:	20.192m?
Surface area:	20.630m?
Clew height:	0.100m
Mast rake:	0.000m

Battens

Position	Length	Roach	Angle	Luff	Leech	Full
80.000%	1.019m	0.220m	75.161?	8.440m	8.743m	Full
60.000%	1.784m	0.298m	75.161?	6.326m	6.557m	Full
40.000%	2.376m	0.260m	75.161?	4.212m	4.371m	Full
20.000%	2.850m	0.155m	75.161?	2.099m	2.186m	Full

Reefing Points

1, Luff: 1.584m ; Leech: 1.622m ; Offset: 0.000m ; Number Eyelets: 2
2, Luff: 3.167m ; Leech: 3.246m ; Offset: 0.000m ; Number Eyelets: 2

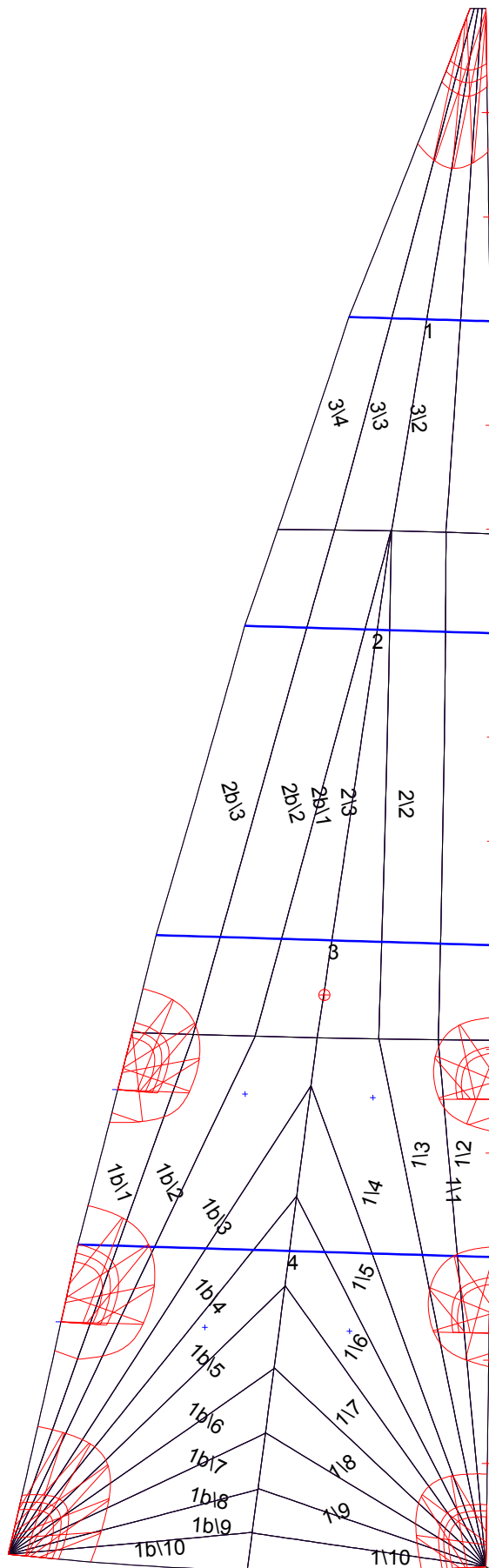
Luff Slides

1, Position: 0.700m
2, Position: 1.399m
3, Position: 2.803m
4, Position: 3.508m
5, Position: 4.917m
6, Position: 5.621m
7, Position: 7.031m
8, Position: 7.736m
9, Position: 9.147m
10, Position: 9.853m

Luff Curve

		Fanned Luff (@ 5.00% [0.162m])	Before BSeam
10.560m,	0.000m	100% (10.560m) :	0.000m
7.920m,	-0.034m	90% (9.504m) :	0.010m
5.280m,	-0.045m	80% (8.448m) :	0.021m
2.640m,	-0.034m	70% (7.392m) :	0.028m
0.000m,	0.000m	60% (6.336m) :	0.032m
		50% (5.280m) :	0.033m
		40% (4.224m) :	0.031m
		30% (3.168m) :	0.027m
		20% (2.112m) :	0.019m
		10% (1.056m) :	0.009m
		0% (0.000m) :	0.000m

Mainsail: 6000104 Albert.des



Seam Allowances

Zone:	Split	Radial	Cross
Zone: 1/a	0.025m	0.015m	0.025m
Zone: 1/b	0.025m	0.015m	0.025m
Zone: 2/a	0.025m	0.015m	0.025m
Zone: 2/b	0.025m	0.015m	0.025m
Zone: 3	0.025m	0.015m	0.025m

Edge Excesses

Sail:	Luff	Leech	Foot
	0.000m	0.000m	0.000m

Total Seam Lengths (m)

Horizontal	4.07
Radial/Vertical	72.75
Bi-Radial Split	7.32

Materials

Material	Area (m ²)	Panels
Material 1	20.66	1/1, 1/2, 1/3, 1/4, 1/5 1/6, 1/7, 1/8, 1/9, 1/10 1b/1, 1b/2, 1b/3, 1b/4, 1b/5 1b/6, 1b/7, 1b/8, 1b/9, 1b/10 2/1, 2/2, 2/3, 2b/1, 2b/2 2b/3, 3/1, 3/2, 3/3, 3/4