

# Mainsail: 6000103 Rod.des

Design Info  
=====

Design File:  
E:\Dropbox\Fareast Sails\2022 Order\6000103 Rod\6000103 Rod.des

Initial Design Date: 7/1/2022  
Boat:

Comments:

Client:

Design Data  
=====

## Main

### Measurements

Luff geodesic: 9.203m  
 Leech geodesic: 9.820m  
 Foot geodesic: 3.694m  
 Head geodesic: 0.115m  
 Upper width (MUW): 0.660m  
 Three-quarter width (MTW): 1.217m  
 Half width (MHW): 2.204m  
 Quarter width (MQW): 3.002m  
 Foot median: 9.397m  
 ORC Mainsail area: 19.154m?  
 Surface area: 19.496m?  
 Clew height: 0.100m  
 Mast rake: 0.000m

### Battens

Position	Length	Roach	Angle	Luff	Leech	Full
80.000%	0.774m	0.155m	70.103?	7.358m	7.823m	
60.000%	1.105m	0.210m	70.103?	5.518m	5.867m	
40.000%	1.105m	0.175m	70.103?	3.678m	3.911m	
20.000%	0.921m	0.096m	70.103?	1.839m	1.956m	

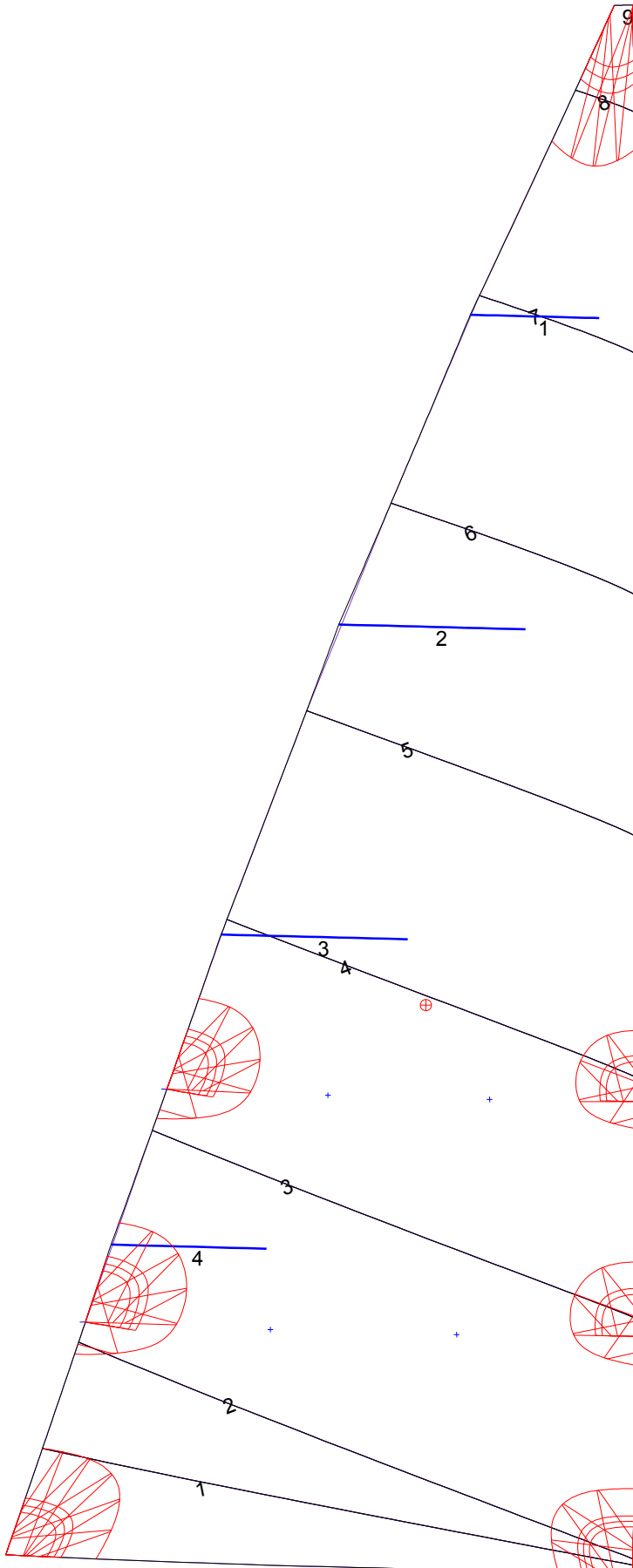
### Reefing Points

1, Luff: 1.380m ; Leech: 1.456m ; Offset: 0.000m ; Number Eyelets: 2  
 2, Luff: 2.760m ; Leech: 2.910m ; Offset: 0.000m ; Number Eyelets: 2

### Luff Curve

		Fanned Luff (@ 5.00% [0.184m])	Before BSeam
9.203m,	0.000m	100% (9.203m) :	-0.000m 0.000m
6.902m,	-0.035m	90% (8.283m) :	0.011m 0.031m
4.601m,	-0.046m	80% (7.362m) :	0.022m 0.062m
2.301m,	-0.035m	70% (6.442m) :	0.030m 0.090m
0.000m,	0.000m	60% (5.522m) :	0.035m 0.109m
		50% (4.601m) :	0.036m 0.113m
		40% (3.681m) :	0.034m 0.103m
		30% (2.761m) :	0.029m 0.086m
		20% (1.840m) :	0.020m 0.059m
		10% (0.920m) :	0.010m 0.027m
		0% (0.000m) :	0.000m 0.000m

# Mainsail: 6000103 Rod.des



Seam Allowances			
Zone: 1	Split	Radial	Cross
	0.000m	0.000m	0.015m

Edge Excesses			
Sail:	Luff	Leech	Foot
	0.000m	0.000m	0.000m

Total Seam Lengths (m)

Horizontal	18.18
Radial/Vertical	0.00
Bi-Radial Split	0.00

Materials

Material	Area (m <sup>2</sup> )	Panels
Material 1	19.50	1,2,3,4,5 6,7,8,9