

Mainsail: 6000102 Shane.des

Design Info
=====

Design File:
E:\Dropbox\Fareast Sails\2022 Order\6000102 Shane\6000102 Shane.des

Initial Design Date: 7/1/2022
Boat:

Comments:

Client:

Design Data
=====

Main

Measurements

Luff geodesic:	14.180m
Leech geodesic:	14.692m
Foot geodesic:	4.240m
Head geodesic:	0.133m
Upper width (MUW):	0.817m
Three-quarter width (MTW):	1.493m
Half width (MHW):	2.636m
Quarter width (MQW):	3.506m
Foot median:	14.403m
ORC Mainsail area:	34.828m?
Surface area:	35.498m?
Clew height:	0.100m
Mast rake:	0.000m

Battens

Position	Length	Roach	Angle	Luff	Leech	Full
80.000%	1.281m	0.258m	75.275?	11.339m	11.721m	Full
60.000%	2.269m	0.350m	75.275?	8.504m	8.791m	Full
40.000%	3.037m	0.292m	75.275?	5.669m	5.860m	Full
20.000%	3.670m	0.160m	75.275?	2.834m	2.930m	Full

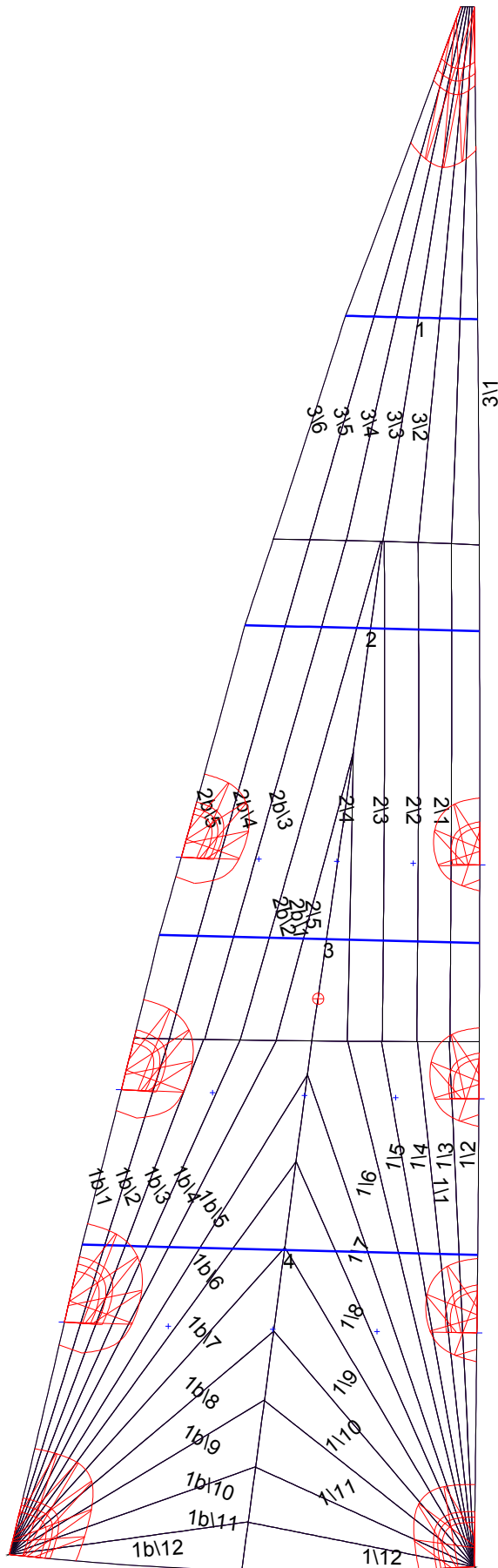
Reefing Points

1, Luff: 2.126m ; Leech: 2.181m ; Offset: 0.000m ; Number Eyelets: 3
2, Luff: 4.253m ; Leech: 4.362m ; Offset: 0.000m ; Number Eyelets: 3
3, Luff: 6.380m ; Leech: 6.544m ; Offset: 0.000m ; Number Eyelets: 3

Luff Curve

		Fanned Luff (@ 5.00% [0.211m])	Before BSeam
14.180m,	0.000m	100% (14.180m) :	0.000m
10.635m,	-0.037m	90% (12.762m) :	0.036m
7.090m,	-0.050m	80% (11.344m) :	0.072m
3.545m,	-0.037m	70% (9.926m) :	0.104m
0.000m,	0.000m	60% (8.508m) :	0.125m
		50% (7.090m) :	0.128m
		40% (5.672m) :	0.117m
		30% (4.254m) :	0.096m
		20% (2.836m) :	0.066m
		10% (1.418m) :	0.030m
		0% (0.000m) :	0.000m

Mainsail: 6000102 Shane.des



Seam Allowances

Zone:	Split	Radial	Cross
Zone: 1/a	0.038m	0.015m	0.038m
Zone: 1/b	0.038m	0.015m	0.038m
Zone: 2/a	0.038m	0.015m	0.038m
Zone: 2/b	0.038m	0.015m	0.038m
Zone: 3	0.038m	0.015m	0.038m

Edge Excesses

Sail:	Luff	Leech	Foot
	0.000m	0.000m	0.000m

Total Seam Lengths (m)

Horizontal	5.25
Radial/Vertical	143.85
Bi-Radial Split	9.81

Materials

Material	Area (m ²)	Panels
Material 1	35.55	1\1,1\2,1\3,1\4,1\5 1\6,1\7,1\8,1\9,1\10 1\11,1\12,1b\1,1b\2,1b\3 1b\4,1b\5,1b\6,1b\7,1b\8 1b\9,1b\10,1b\11,1b\12,2\1 2\2,2\3,2\4,2\5,2b\1 2b\2,2b\3,2b\4,2b\5,3\1 3\2,3\3,3\4,3\5,3\6