

Mainsail: 5000114-Main-1 v3.des

Design Info

=====

Design File:

F:\Dropbox (个人)\Fareast Sails\2021\5000114 Torodd-1-2\5000114-Main-1 v3.des

Initial Design Date: 1/2/2021

Boat:

Comments:

Client:

Design Data

=====

Main

Measurements

Luff geodesic:	13.600m
Leech geodesic:	14.300m
Foot geodesic:	4.800m
Head geodesic:	0.115m
Upper width (MUW):	0.873m
Three-quarter width (MTW):	1.627m
Half width (MHW):	2.918m
Quarter width (MQW):	3.934m
Foot median:	13.956m
ORC Mainsail area:	37.183m?
Surface area:	38.136m?
Clew height:	0.100m
Mast rake:	0.000m

Battens

Position	Length	Roach	Angle	Luff	Leech	Full
80.000%	1.384m	0.203m	72.325?	10.875m	11.405m	Full
60.000%	2.493m	0.280m	72.325?	8.156m	8.553m	Full
40.000%	3.376m	0.232m	72.325?	5.439m	5.702m	Full
20.000%	4.128m	0.133m	72.325?	2.722m	2.851m	Full

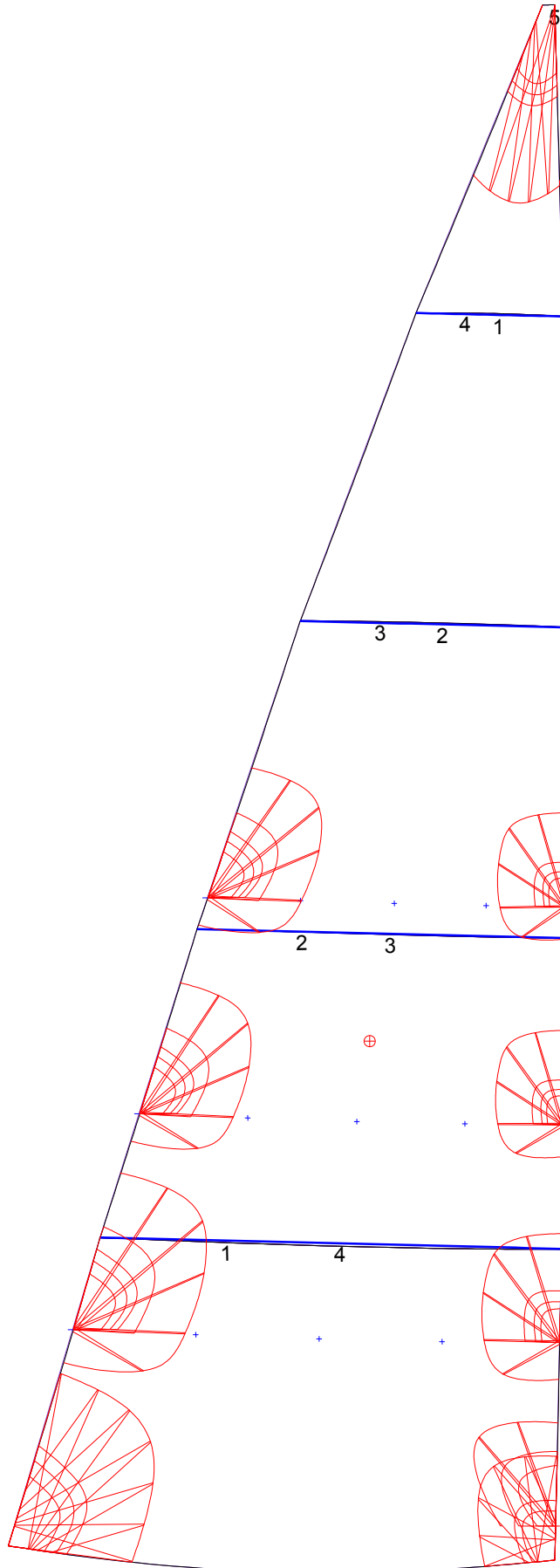
Reefing Points

1, Luff: 1.903m ; Leech: 1.983m ; Offset: 0.000m ; Number Eyelets: 3
2, Luff: 3.806m ; Leech: 3.964m ; Offset: 0.000m ; Number Eyelets: 3
3, Luff: 5.710m ; Leech: 5.945m ; Offset: 0.000m ; Number Eyelets: 3

Luff Curve

		Fanned Luff (@ 5.00% [0.239m])	Before BSeam
13.599m,	0.000m	100% (13.600m) :	0.000m
11.904m,	-0.048m	90% (12.240m) :	0.065m
10.199m,	-0.083m	80% (10.880m) :	0.127m
8.180m,	-0.100m	70% (9.520m) :	0.174m
6.799m,	-0.097m	60% (8.160m) :	0.199m
5.067m,	-0.086m	50% (6.800m) :	0.199m
3.400m,	-0.068m	40% (5.440m) :	0.180m
1.695m,	-0.039m	30% (4.080m) :	0.147m
0.000m,	0.000m	20% (2.720m) :	0.103m
		10% (1.360m) :	0.051m
		0% (0.000m) :	0.000m

Mainsail: 5000114-Main-1 v3.des



Seam Allowances			
Zone: 1	Split	Radial	Cross
	0.000m	0.000m	0.060m

Edge Excesses			
Sail:	Luff	Leech	Foot
	0.000m	0.000m	0.000m

Total Seam Lengths (m)

Horizontal	11.38
Radial/Vertical	0.00
Bi-Radial Split	0.00

Materials

Material	Area (m ²)	Panels
Material 1	38.21	1,2,3,4,5