

# Genoa: 8001208 Mark Weta jib.des

Design Info  
=====

Design File:  
\\NAS\Engineering files\Queenie-Customer Order\Fareast Sails\2024 Orders\Need to be Confirmed\8001208 Mark We

Initial Design Date: 25/6/2024  
Boat:

Comments:

Client:

Design Data  
=====

## Genoa

### Measurements

Luff geodesic: 4.450m  
 Leech geodesic: 4.030m  
 Foot geodesic: 1.540m  
 Headboard width: 0.035m  
 Luff perpendicular (HLP): 1.409m  
 Upper width (HUW): 0.221m  
 Three-quarter width (HTW): 0.411m  
 Half width (HHW): 0.764m  
 Quarter width (HQW): 1.094m  
 Foot median: 4.231m  
 ORC Headsail area: 3.308m?  
 IRC Headsail area: 3.308m?  
 Surface area: 3.371m?  
 Forestay height: 5.000m  
 J: 1.500m

### Battens

Position	Length	Roach	Angle	Luff	Leech	Full
75.000%	0.434m	0.041m	87.502?	3.394m	3.018m	Full
50.000%	0.801m	0.042m	87.502?	2.347m	2.012m	Full
25.000%	1.141m	0.019m	87.502?	1.301m	1.006m	Full

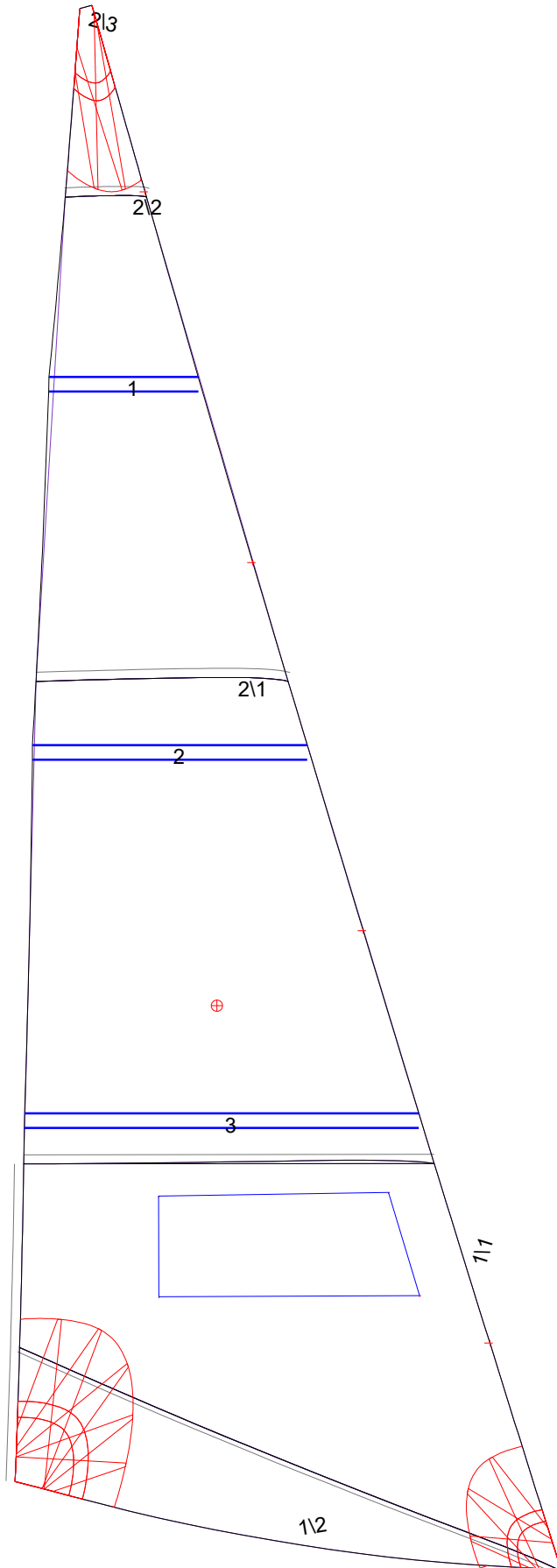
### Luff Slides

- 1, Position: 0.650m
- 2, Position: 1.824m
- 3, Position: 2.871m
- 4, Position: 3.922m

### Luff Curve

		Fanned Luff (@ 5.00% [0.074m])	Before BSeam
4.449m,	0.000m	100% (4.449m) :	-0.000m 0.000m
3.557m,	0.021m	90% (4.004m) :	-0.011m 0.001m
2.666m,	0.029m	80% (3.560m) :	-0.021m 0.002m
1.775m,	0.026m	70% (3.115m) :	-0.027m 0.005m
0.887m,	0.016m	60% (2.670m) :	-0.030m 0.009m
0.000m,	0.000m	50% (2.225m) :	-0.029m 0.014m
		40% (1.780m) :	-0.027m 0.017m
		30% (1.335m) :	-0.024m 0.020m
		20% (0.890m) :	-0.017m 0.020m
		10% (0.445m) :	-0.009m 0.015m
		0% (0.000m) :	0.000m 0.000m

# Genoa: 8001208 Mark Weta jib.des



## Seam Allowances

	Split	Radial	Cross
Zone: 1	0.025m	0.013m	0.025m
Zone: 2	0.025m	0.013m	0.025m

## Edge Excesses

Sail:	Luff	Leech	Foot
	0.000m	0.000m	0.000m

## Total Seam Lengths (m)

Horizontal	2.15
Radial/Vertical	1.63
Bi-Radial Split	0.90

## Materials

Material	Area (m <sup>2</sup> )	Panels
white	3.35	1/1,1/2,2/1,2/2,2/3