

Mainsail: 8001121 Ole sqtop mainsail.des

Design Info
=====

Design File:
\\NAS\Engineering files\Queenie-Customer Order\Fareast Sails\2024 Orders\Need to be Confirmed\8001121 Ole main

Initial Design Date: 12/12/2024
Boat:

Comments:

Client:

Design Data
=====

Main

Measurements

Luff geodesic:	9.150m
Leech geodesic:	9.662m
Foot geodesic:	3.550m
Head geodesic:	2.200m
Upper width (MUW):	0.000m
Three-quarter width (MTW):	2.580m
Half width (MHW):	2.955m
Quarter width (MQW):	3.257m
Foot median:	9.424m
ORC Mainsail area:	23.952m?
Surface area:	27.542m?
Clew height:	0.038m
Mast rake:	0.510m

Battens

Position	Length	Roach	Angle	Luff	Leech	Full
100.000%	2.617m	0.000m	112.637?	7.879m	9.589m	Full
93.354%	0.400m	0.084m	90.000?	8.278m	8.952m	
86.722%	0.400m	0.115m	90.000?	7.668m	8.316m	
80.156%	2.678m	0.110m	84.721?	7.297m	7.686m	Full
59.935%	2.893m	0.017m	84.721?	5.465m	5.747m	Full
39.715%	3.117m	-0.017m	84.721?	3.634m	3.808m	Full
19.499%	3.335m	-0.017m	84.721?	1.803m	1.870m	Full

Reefing Points

- 1, Luff: 1.600m ; Leech: 1.613m ; Offset: 0.000m ; Number Eyelets: 3
- 2, Luff: 3.200m ; Leech: 3.222m ; Offset: 0.000m ; Number Eyelets: 3
- 3, Luff: 4.800m ; Leech: 4.827m ; Offset: 0.000m ; Number Eyelets: 3

Luff Slides

- 1, Position: 0.601m
- 2, Position: 1.202m
- 3, Position: 2.413m
- 4, Position: 3.024m
- 5, Position: 4.244m
- 6, Position: 4.855m
- 7, Position: 6.076m
- 8, Position: 6.687m
- 9, Position: 8.515m

Luff Curve

		Fanned Luff (@ 5.00% [0.177m])	Before BSeam
9.150m,	0.000m	100% (9.150m) :	0.000m
8.009m,	-0.024m	90% (8.236m) :	0.014m
6.862m,	-0.042m	80% (7.320m) :	0.026m
5.712m,	-0.049m	70% (6.405m) :	0.032m
4.575m,	-0.050m	60% (5.490m) :	0.035m
3.409m,	-0.046m	50% (4.575m) :	0.035m
2.287m,	-0.037m	40% (3.660m) :	0.032m
1.140m,	-0.021m	30% (2.745m) :	0.027m
0.000m,	0.000m	20% (1.830m) :	0.020m
		10% (0.915m) :	0.010m
		0% (0.000m) :	0.000m

Section Data

Position	Camber	Draft	Twist	Entry	Exit	Roach	Fwd Camb	Aft Camb
100.00%	3.252%	37.962%	15.000?	13.576?	-5.931?	0.000m	2.743%	2.461%
95.00%	5.514%	38.020%	14.250?	19.536?	-9.975?	0.000m	4.396%	4.148%
85.00%	8.729%	38.135%	12.750?	28.656?	-14.761?	0.000m	6.799%	6.405%
75.00%	10.356%	38.250%	11.250?	33.335?	-16.167?	0.000m	8.013%	7.419%
50.00%	10.517%	38.537%	7.500?	36.540?	-16.390?	0.000m	8.296%	7.516%
25.00%	7.827%	38.825%	3.750?	27.703?	-12.598?	0.000m	6.187%	5.629%
10.00%	4.885%	38.997%	1.500?	17.030?	-8.832?	0.000m	3.832%	3.622%
0.00%	2.500%	39.112%	0.000?	7.921?	-5.573?	0.000m	1.901%	1.972%

Mainsail: 8001121 Ole sqtop mainsail.des

Chord Data

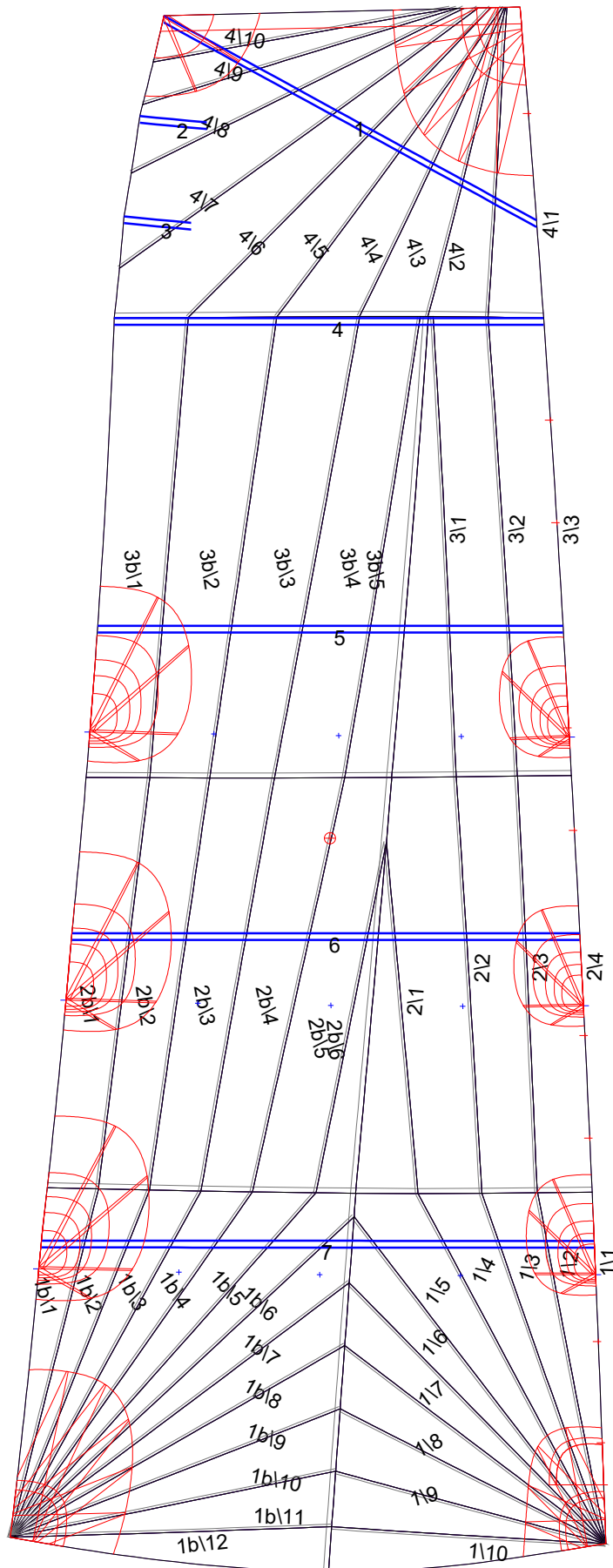
Luff P : 9.1496m
Foot E : 3.5409m
Leech : 9.5890m
Headboard width : 2.1925m

Include Headboard in Diagonal: Diagonal from Inner End of Headboard

Fanned Foot Curve Depths

25.0%	50.0%	75.0%
0.1287m	0.1720m	0.1183m

Mainsail: 8001121 Ole sqtop mainsail.des



Seam Allowances

Zone:	Split	Radial	Cross
Zone: 1/a	0.030m	0.015m	0.030m
Zone: 1/b	0.030m	0.015m	0.030m
Zone: 2/a	0.030m	0.015m	0.030m
Zone: 2/b	0.030m	0.015m	0.030m
Zone: 3/a	0.030m	0.015m	0.030m
Zone: 3/b	0.030m	0.015m	0.030m
Zone: 4	0.030m	0.015m	0.030m

Edge Excesses

Sail:	Luff	Leech	Foot
	0.000m	0.000m	0.000m

Total Seam Lengths (m)

Horizontal	8.97
Radial/Vertical	100.17
Bi-Radial Split	7.78

Materials

Material	Area (m ²)	Panels
Material 1	27.58	1b\1,1b\2,1b\3,1b\4,1b\5 1b\6,1b\7,1b\8,1b\9,1b\10 1b\11,1b\12,2b\1,2b\2,2b\3 2b\4,2b\5,2b\6,2b\7,2b\8 2b\9,2b\10,3b\1,3b\2,3b\3 3b\4,3b\5,4b\1,4b\2,4b\3,4b\4,4b\5 4b\6,4b\7,4b\8,4b\9,4b\10