

# Genoa: 8001104 Ric-4 Samson Ketch 68 furlJib3.des

Design Info  
=====

Design File:  
\\NAS\Engineering files\Queenie-Customer Order\Fareast Sails\2024 Orders\Need to be Confirmed\8001104 Ric Samson

Initial Design Date: 14/12/2024  
Boat:  
Samson Ketch 68  
Client:

Comments:

Design Data  
=====

## Genoa

### Measurements

Luff geodesic:	9.600m
Leech geodesic:	8.500m
Foot geodesic:	3.700m
Headboard width:	0.050m
Luff perpendicular (HLP):	3.285m
Upper width (HUW):	0.379m
Three-quarter width (HTW):	0.727m
Half width (HHW):	1.509m
Quarter width (HQW):	2.364m
Foot median:	8.956m
ORC Headsail area:	15.107m <sup>2</sup>
IRC Headsail area:	15.079m <sup>2</sup>
Surface area:	15.157m <sup>2</sup>
Forestay height:	10.120m
J:	3.500m

### Draft Stripes

1, Luff: 3.180m ; Leech: 2.394m ;  
2, Luff: 6.355m ; Leech: 5.386m ;

### Luff Slides

1, Position: 0.700m  
2, Position: 1.400m  
3, Position: 2.100m  
4, Position: 2.800m  
5, Position: 3.500m  
6, Position: 4.200m  
7, Position: 4.900m  
8, Position: 5.600m  
9, Position: 6.300m  
10, Position: 7.000m  
11, Position: 7.700m  
12, Position: 8.400m  
13, Position: 9.100m

### Luff Curve

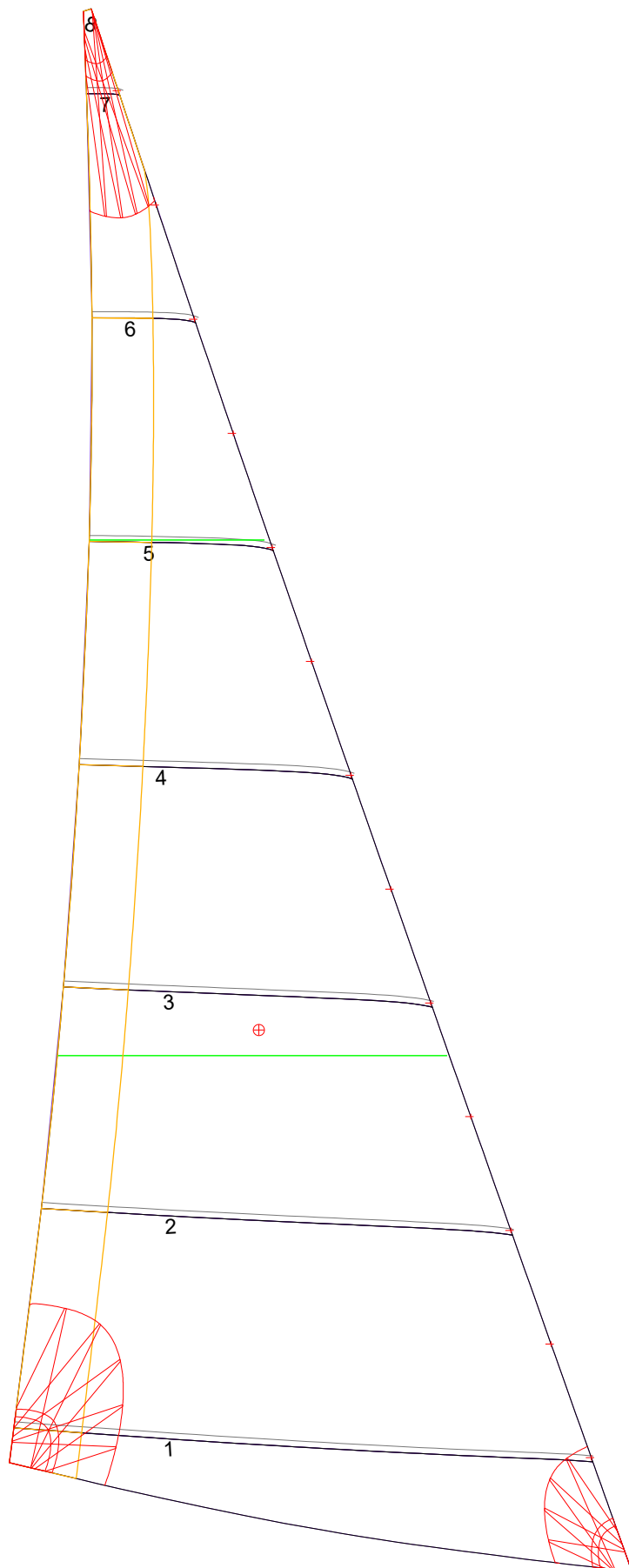
9.599m,	0.000m
8.801m,	0.024m
7.919m,	0.044m
7.143m,	0.054m
6.239m,	0.058m
4.777m,	0.051m
3.120m,	0.034m
1.622m,	0.017m
0.000m,	0.000m

### Fanned Luff (@ 5.00% [0.181m])

100% (9.599m) :	0.000m	-0.000m
90% (8.640m) :	-0.026m	-0.000m
80% (7.680m) :	-0.046m	0.003m
70% (6.720m) :	-0.056m	0.009m
60% (5.760m) :	-0.058m	0.018m
50% (4.800m) :	-0.055m	0.026m
40% (3.840m) :	-0.047m	0.030m
30% (2.880m) :	-0.037m	0.029m
20% (1.920m) :	-0.026m	0.025m
10% (0.959m) :	-0.014m	0.016m
0% (0.000m) :	0.000m	0.000m

### Before BSeam

# Genoa: 8001104 Ric-4 Samson Ketch 68 furlJib3.des



Seam Allowances			
	Split	Radial	Cross
Zone: 1	0.035m	0.035m	0.035m
Cover 1	0.035m	0.035m	0.035m

Edge Excesses			
	Luff	Leech	Foot
Sail:	0.000m	0.000m	0.000m
Cover 0	0.000m	0.000m	0.000m

### Total Seam Lengths (m)

Horizontal	12.20
Radial/Vertical	0.00
Bi-Radial Split	0.00

### Materials

Material	Area (m <sup>2</sup> )	Panels
Material 1	15.21	1,2,3,4,5 6,7,8